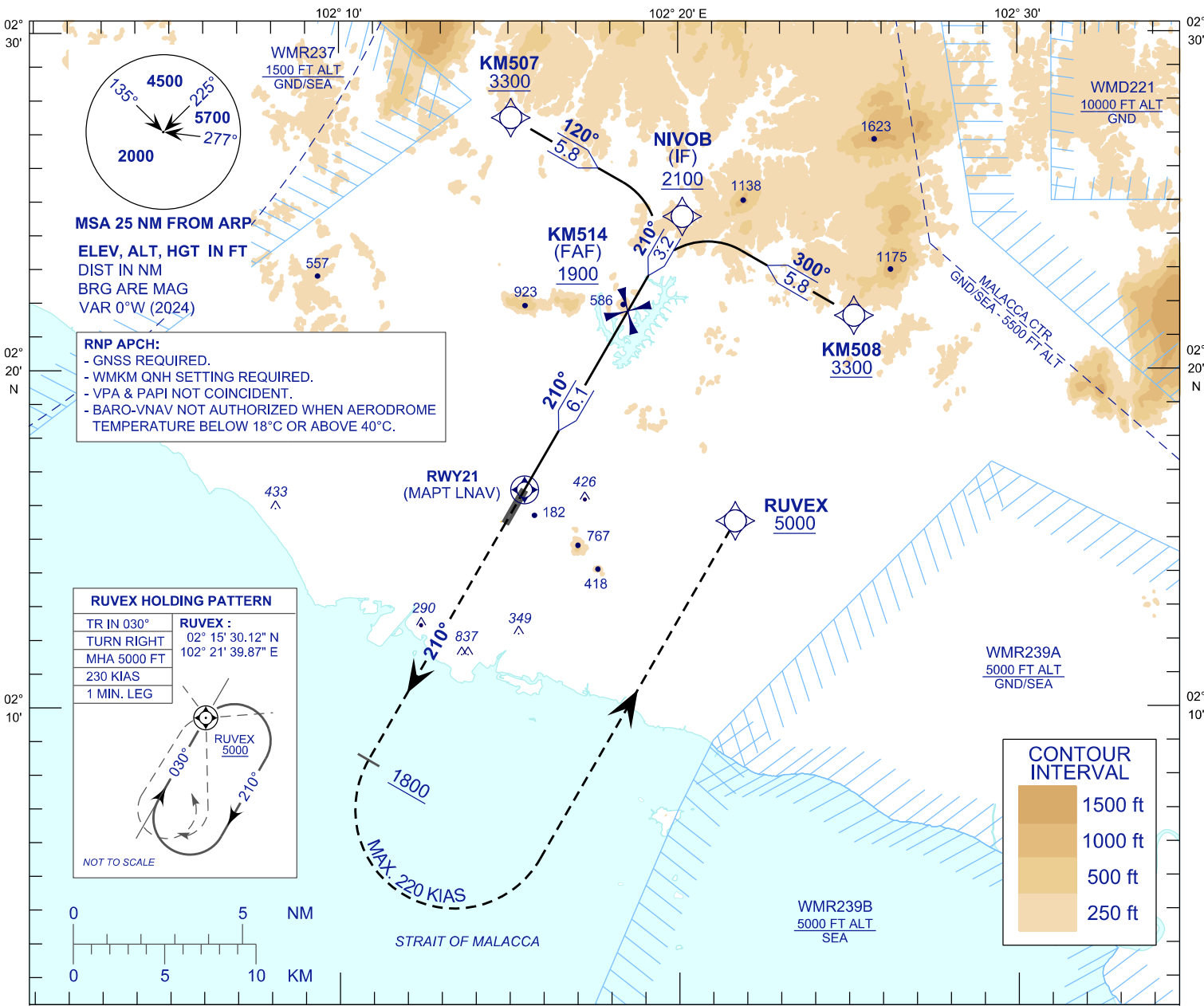


**INSTRUMENT
APPROACH
CHART - ICAO**

AERODROME ELEV 40FT
HEIGHT RELATED TO
THR RWY 21 - ELEV 40FT

TWR 118.00
SMC 121.60
ATIS 127.45

MALACCA/MALACCA (WMKM)
RNP Y RWY 21



MSA 25 NM FROM ARP
ELEV, ALT, HGT IN FT
DIST IN NM
BRG ARE MAG
VAR 0°W (2024)

- RNP APCH:**
- GNSS REQUIRED.
 - WMKM QNH SETTING REQUIRED.
 - VPA & PAPI NOT COINCIDENT.
 - BARO-VNAV NOT AUTHORIZED WHEN AERODROME TEMPERATURE BELOW 18°C OR ABOVE 40°C.

RUVEX HOLDING PATTERN

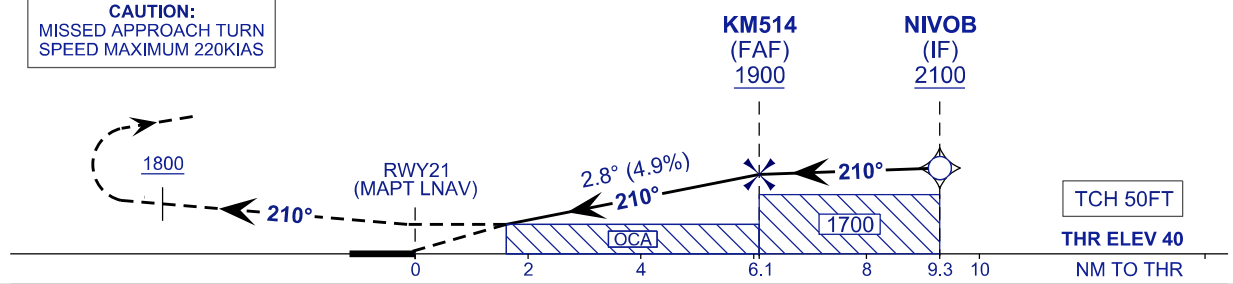
TR IN 030°	RUVEX : 02° 15' 30.12" N 102° 21' 39.87" E
TURN RIGHT	
MHA 5000 FT	
230 KIAS	
1 MIN. LEG	

NOT TO SCALE

TRANSITION LEVEL FL 130
TRANSITION ALT 11,000 FT

MISSED APPROACH:
CLIMB TO 5000 FT OR ABOVE ON TR 210°, ON PASSING 1800 FT TURN LEFT TO RUVEX AND HOLD, OR AS DIRECTED BY ATC.

CAUTION:
MISSED APPROACH TURN
SPEED MAXIMUM 220KIAS



CAT.	A	B	C
	570 (530)		
LNAV	378 (338)	390 (350)	398 (358)

DIST THR RWY21 (NM)	6.1	5.0	4.0	3.0	2.0	1.0
ALTITUDE (FT)	1900	1576	1279	981	684	387
GROUND SPEED (KT)	80	100	120	140	160	180
FAF - RWY21(6.1NM) (MIN:SEC)	4:34	3:39	3:03	2:37	2:17	2:02
RATE OF DESCEND (297.2 FT/MIN)	400	500	590	690	790	890