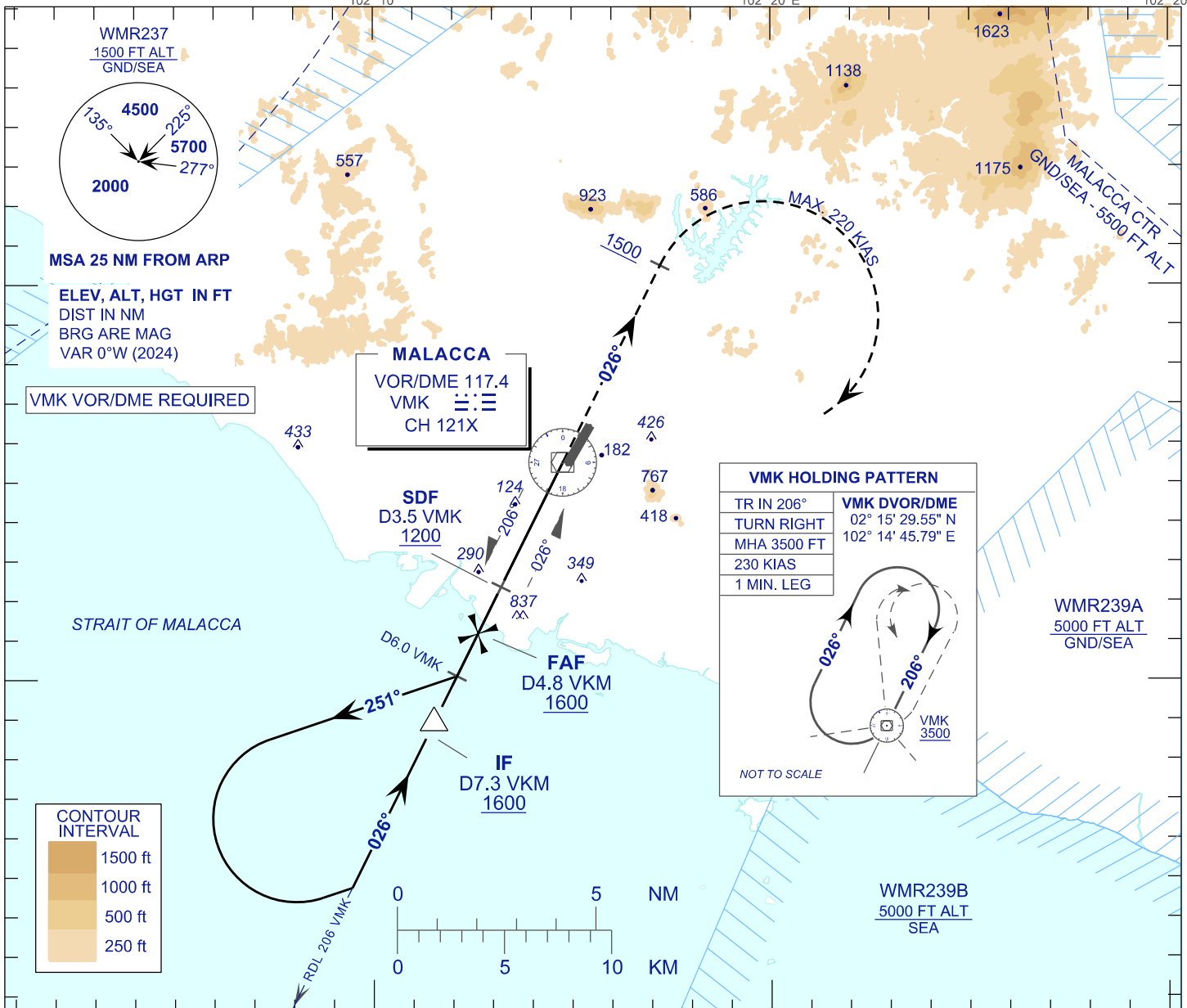


**INSTRUMENT
APPROACH
CHART - ICAO**

AERODROME ELEV 40FT
HEIGHT RELATED TO
THR RWY 03 - ELEV 18FT

TWR 118.00
SMC 121.60
ATIS 127.45

MALACCA/MALACCA (WMKM)
VOR Y RWY 03

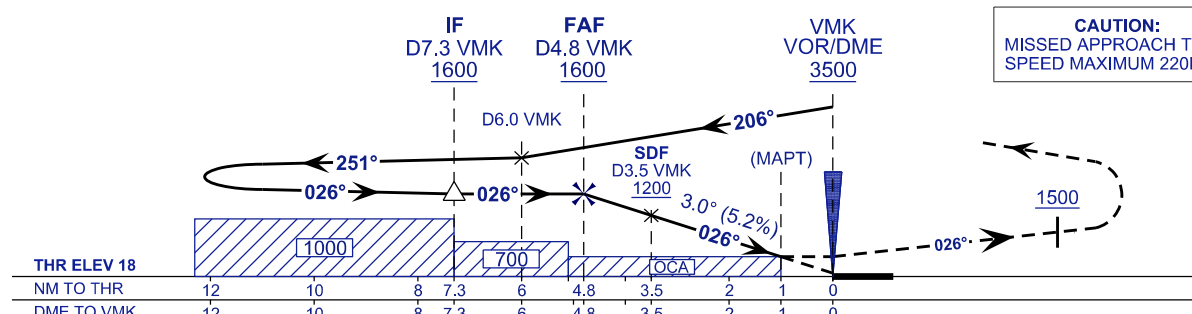


TRANSITION LEVEL FL 130
TRANSITION ALT 11,000 FT

MISSED APPROACH:

CLIMB TO 3500 FT OR ABOVE ON TR 026°, ON PASSING 1500 FT TURN RIGHT TO VMK DVOR/DME AND HOLD, OR AS DIRECTED BY ATC.

CAUTION:
MISSED APPROACH TURN
SPEED MAXIMUM 220KIAS



CAT.	A	B	C
OCA (H)			
VOR/DME	680 (662)		

DME VMK (NM)	4.8	4.0	3.0	2.0	1.0
DIST THR RWY03 (NM)	4.8	4.0	3.0	2.0	1.0
ALTITUDE (FT)	1600	1342	1024	705	387

GROUND SPEED (KT)	80	100	120	140	160	180
FAF - RWY03 (4.8NM) (MIN:SEC)	3:36	2:53	2:24	2:04	1:48	1:36
RATE OF DESCEND (318.6 FT/MIN)	420	530	640	740	850	960