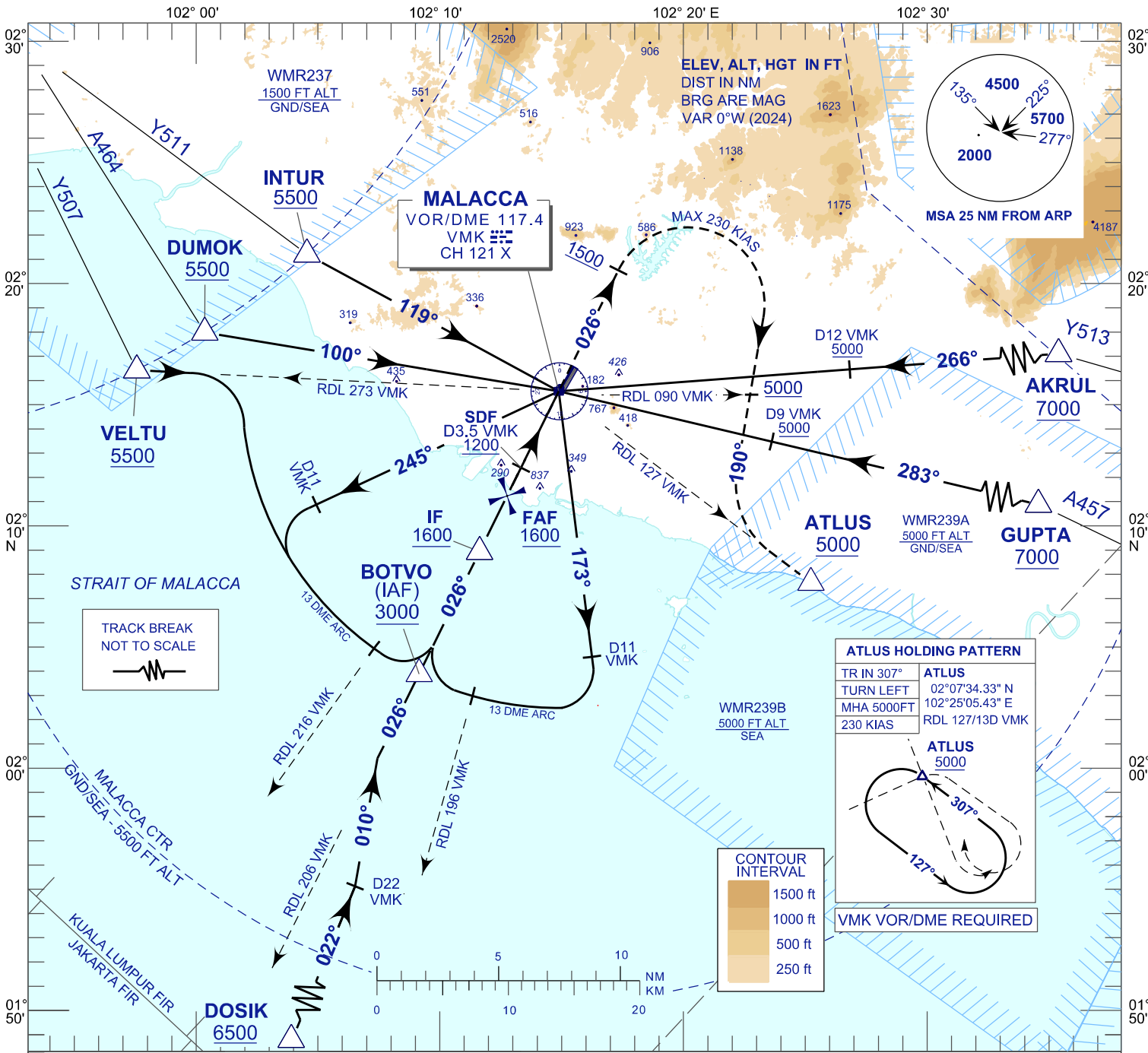


**INSTRUMENT  
APPROACH  
CHART - ICAO**

**AERODROME ELEV 40FT**  
HEIGHT RELATED TO  
THR RWY 03 - ELEV 18FT

TWR 118.00  
SMC 121.60  
ATIS 127.45

**MALACCA/MALACCA (WMKM)  
VOR Z (13 DME ARC) RWY 03**

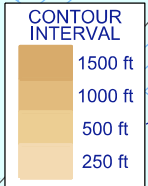


**ATLUS HOLDING PATTERN**

TR IN 307°	ATLUS
TURN LEFT	02°07'34.33" N 102°25'05.43" E
MHA 5000FT	RDL 127/13D VMK
230 KIAS	

**ATLUS 5000**

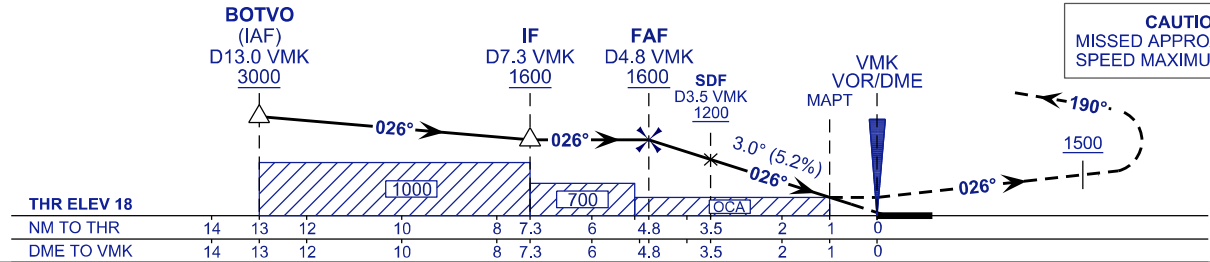
VMK VOR/DME REQUIRED



TRANSITION LEVEL FL 130  
TRANSITION ALT 11,000 FT

**MISSED APPROACH:**  
CLIMB TO 5000 FT OR ABOVE ON TR 026°, ON PASSING 1500 FT TURN RIGHT TR 190° THEN TO INTERCEPT RDL 127 VMK THEN TO ATLUS AND HOLD, OR AS DIRECTED BY ATC.

**CAUTION:**  
MISSED APPROACH TURN  
SPEED MAXIMUM 230KIAS



CAT.	A	B	C
OCA (H)			
VOR/DME	680 (662)		

DME VMK (NM)	4.8	4.0	3.0	2.0	1.0
DIST THR RWY03 (NM)	4.8	4.0	3.0	2.0	1.0
ALTITUDE (FT)	1600	1342	1024	705	387

GROUND SPEED (KT)	80	100	120	140	160	180
FAF - RWY03 (4.8NM) (MIN:SEC)	3:36	2:53	2:24	2:04	1:48	1:36
RATE OF DESCEND (318.6 FT/MIN)	420	530	640	740	850	960