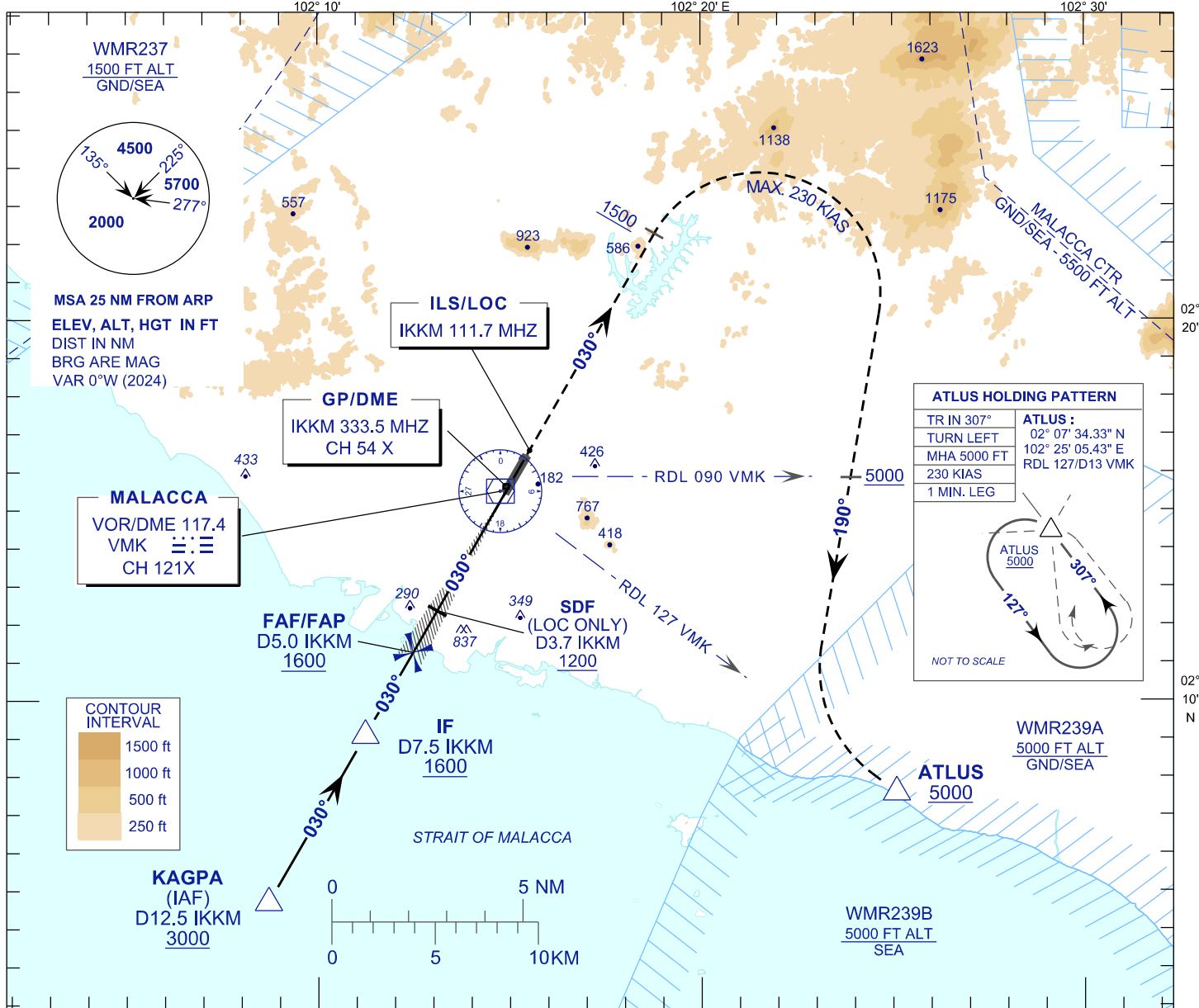


**INSTRUMENT
APPROACH
CHART - ICAO**

AERODROME ELEV 40FT
HEIGHT RELATED TO
THR RWY 21 - ELEV 18FT

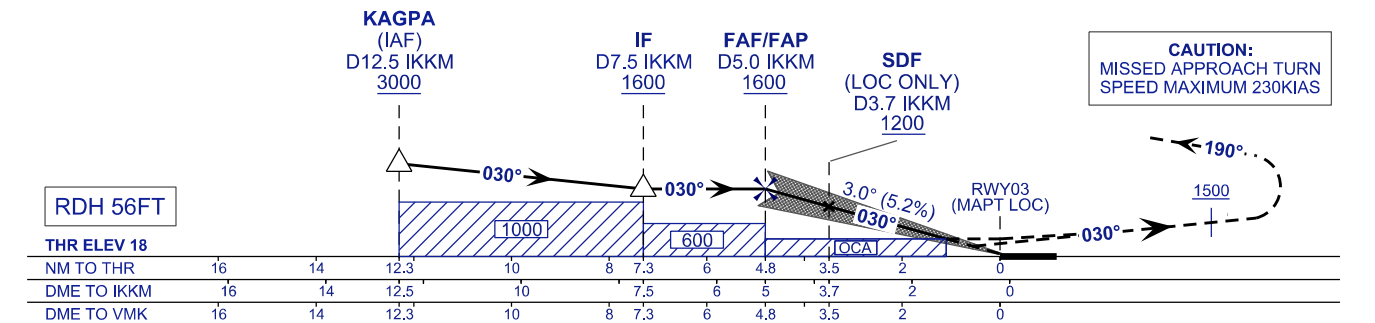
TWR 118.00
SMC 121.60
ATIS 127.45

MALACCA/MALACCA (WMKM)
ILS Z OR LOC Z RWY 03



TRANSITION LEVEL FL 130
TRANSITION ALT 11,000 FT

MISSED APPROACH:
CLIMB TO 5000 FT OR ABOVE ON TR 030°, ON PASSING 1500 FT TURN RIGHT TR 190° TO INTERCEPT RDL 127 VMK VOR/DME THEN TO ATLUS AND HOLD, OR AS DIRECTED BY ATC.



THR ELEV 18						
NM TO THR	16	14	12.3	10	8	7.3
DME TO IKKM	16	14	12.5	10	8	7.5
DME TO VMK	16	14	12.3	10	8	7.3

	DME VMK (NM)				
	5.0	4.0	3.0	2.0	1.0
	DIST THR RWY03 (NM)				
	4.8	3.8	2.8	1.8	0.8
	ALTITUDE (FT)				
	1600	1291	972	654	335

	GROUND SPEED (KT)					
	80	100	120	140	160	180
	FAF - RWY03 (4.8NM) (MIN:SEC)					
	3:36	2:53	2:24	2:03	1:48	1:36
	RATE OF DESCEND (318.4 FT/MIN)					
	420	530	640	740	850	960

	CAT.		
	A	B	C
OCA (H)			
ILS/DME (CAT I)	230 (212)	242 (224)	250 (232)
LOC/DME (GP INOP)	420 (402)		