

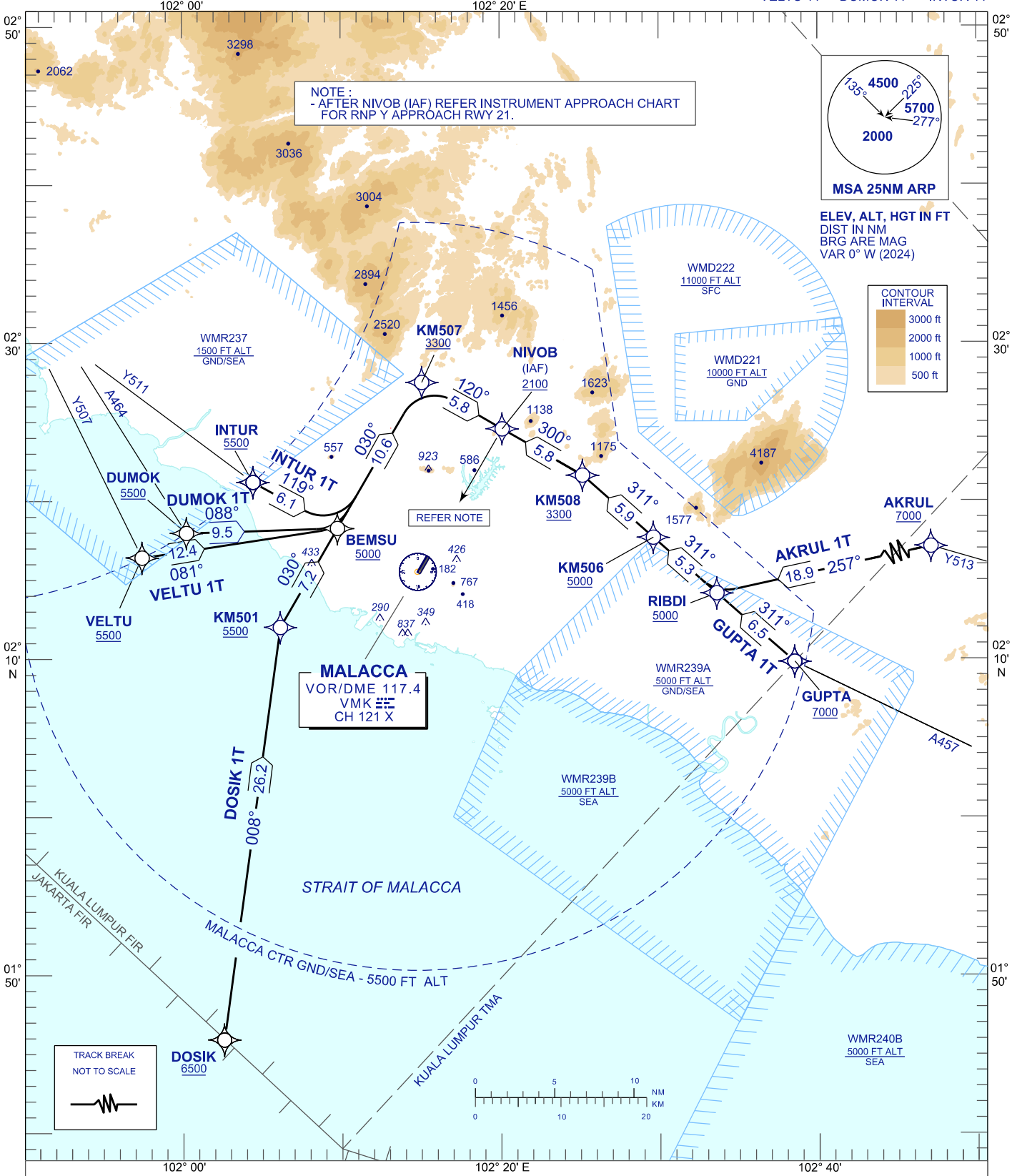
**STANDARD ARRIVAL CHART  
INSTRUMENT (STAR) - ICAO**

**TRANSITION ALTITUDE**  
11000FT

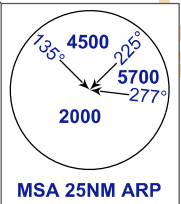
TWR 118.00  
SMC 121.60  
ATIS 127.45

**MALACCA/MALACCA (WMKM)  
RNAV (GNSS) RWY 21**

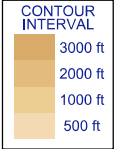
AKRUL 1T  
VELTU 1T  
GUPTA 1T  
DUMOK 1T  
DOSIK 1T  
INTUR 1T



**NOTE:**  
- AFTER NIVOB (IAF) REFER INSTRUMENT APPROACH CHART FOR RNP Y APPROACH RWY 21.

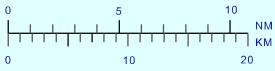


**ELEV. ALT, HGT IN FT**  
DIST IN NM  
BRG ARE MAG  
VAR 0° W (2024)



REFER NOTE

**MALACCA**  
VOR/DME 117.4  
VMK  
CH 121 X



**COMMUNICATION FAILURE:**

- SET TRANSPONDER TO MODE A/C CODE 7600.
- IF UNDER PILOT NAVIGATION, MAINTAIN ASSIGNED LEVEL FOR 3 MINUTES. IF NO ONWARD CLEARANCE IS RECEIVED, SUBSEQUENTLY DESCENT TO COMPLY WITH STAR AND LAND.
- IF UNDER RADAR VECTORED, MAINTAIN VECTOR FOR 1 MINUTES, IF BELOW MSA CLIMB TO MSA, THEN TRACK TO INTERCEPT CLEARED OR PREVIOUSLY ASSIGNED STAR AND LAND.