

**STANDARD ARRIVAL CHART  
INSTRUMENT (STAR) - ICAO**

**TRANSITION ALTITUDE**  
11000FT

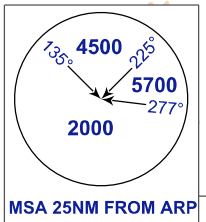
TWR 118.00  
SMC 121.60  
ATIS 127.45

**MALACCA/MALACCA (WMKM)  
RNAV (GNSS) RWY 03**

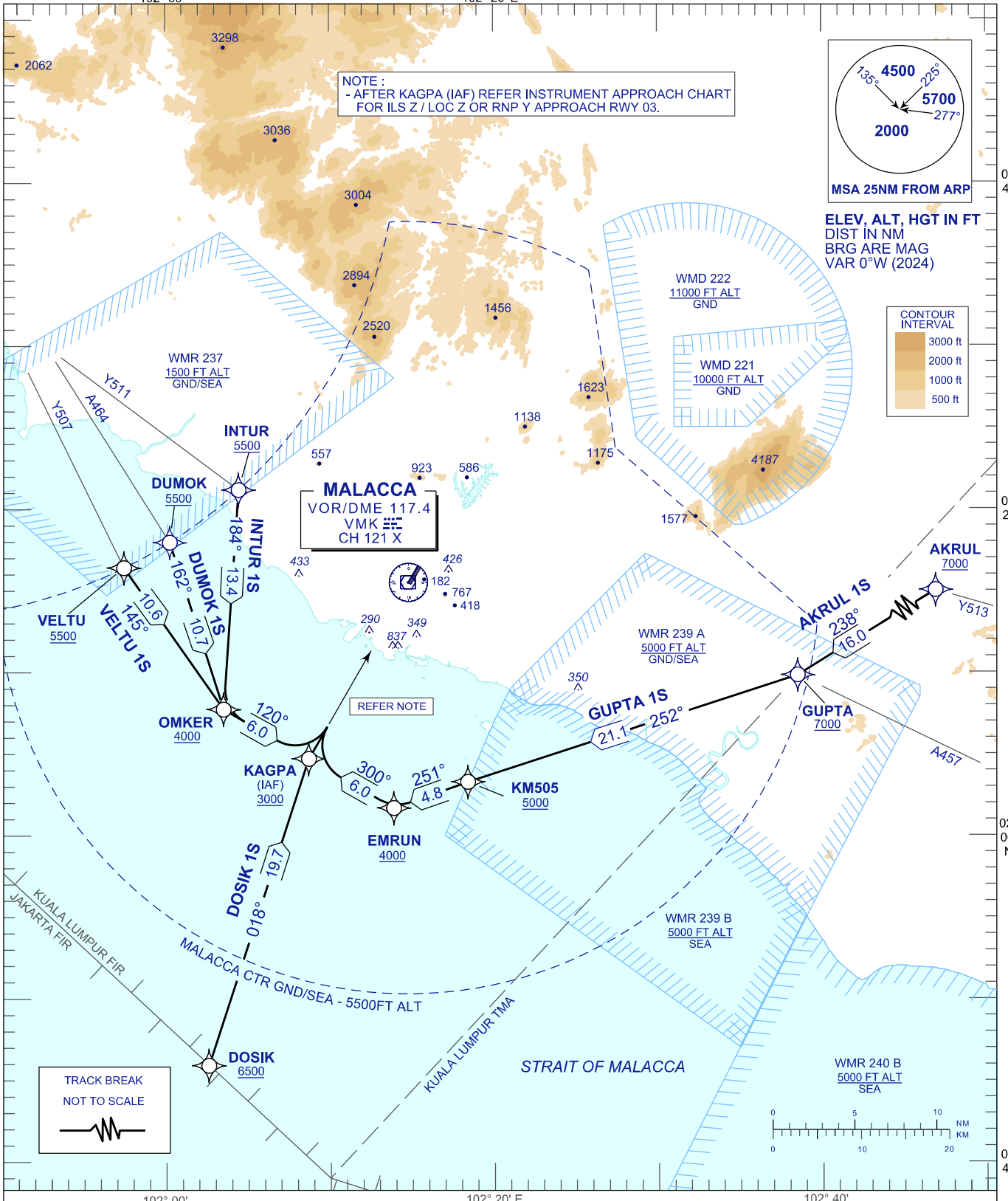
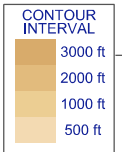
AKRUL 1S  
VELTU 1S  
GUPTA 1S  
DUMOK 1S  
DOSIK 1S  
INTUR 1S

102° 00' 102° 20' E

**NOTE :**  
- AFTER KAGPA (IAF) REFER INSTRUMENT APPROACH CHART  
FOR ILS Z / LOC Z OR RNP Y APPROACH RWY 03.



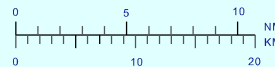
**ELEV. ALT, HGT IN FT  
DIST IN NM  
BRG ARE MAG  
VAR 0°W (2024)**



**MALACCA**  
VOR/DME 117.4  
VMK  
CH 121 X

REFER NOTE

TRACK BREAK  
NOT TO SCALE



**COMMUNICATION FAILURE:**

- SET TRANSPONDER TO MODE A/C CODE 7600.
- IF UNDER PILOT NAVIGATION, MAINTAIN ASSIGNED LEVEL FOR 3 MINUTES. IF NO ONWARD CLEARANCE IS RECEIVED, SUBSEQUENTLY DESCENT TO COMPLY WITH STAR AND LAND.
- IF UNDER RADAR VECTORED, MAINTAIN VECTOR FOR 1 MINUTES, IF BELOW MSA CLIMB TO MSA, THEN TRACK TO INTERCEPT CLEARED OR PREVIOUSLY ASSIGNED STAR AND LAND.