

**STANDARD DEPARTURE CHART
INSTRUMENT (SID) - ICAO**

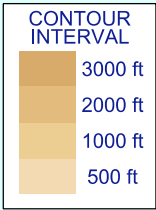
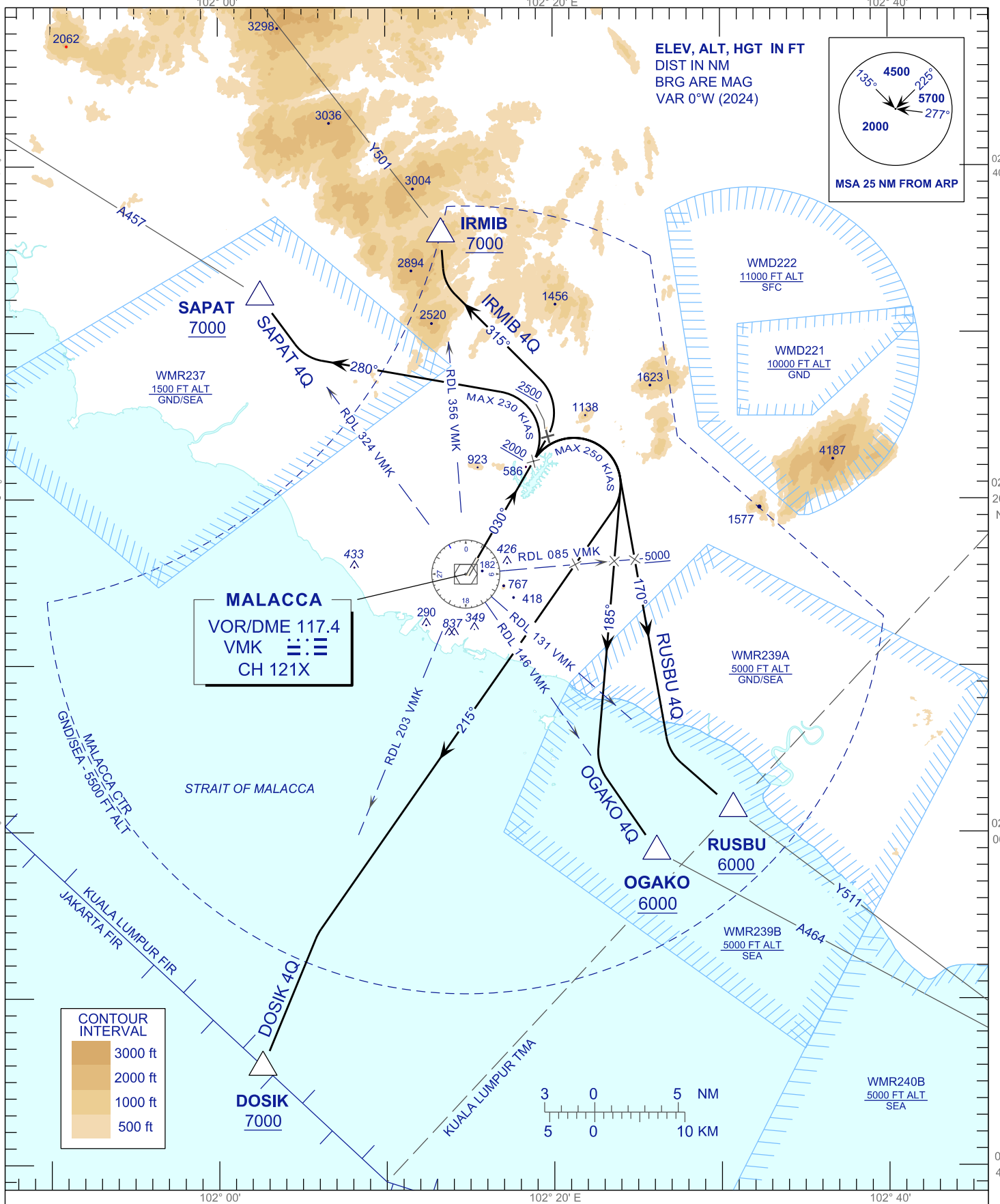
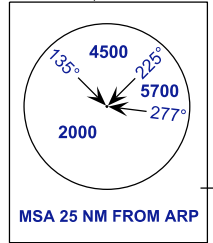
TRANSITION ALTITUDE
11000FT

TWR 118.00
SMC 121.60
ATIS 127.45

**MALACCA/MALACCA (WMKM)
RWY 03**

RUSBU 4Q OGAKO 4Q
DOSIK 4Q SAPAT 4Q
IRMIB 4Q

**ELEV, ALT, HGT IN FT
DIST IN NM
BRG ARE MAG
VAR 0°W (2024)**



COMMUNICATION FAILURE:

- SET TRANSPONDER TO MODE A/C CODE 7600.
- IF UNDER PILOT NAVIGATION, MAINTAIN ASSIGNED LEVEL FOR 3 MINUTES. IF NO ONWARD CLEARANCE IS RECEIVED, SUBSEQUENTLY CLIMB TO COMPLY WITH SID.
- IF UNDER RADAR VECTORED, MAINTAIN VECTOR FOR 2 MINUTES, IF BELOW MSA CLIMB TO MSA, THEN TRACK TO INTERCEPT CLEARED OR PREVIOUSLY ASSIGNED SID TO DESTINATION.