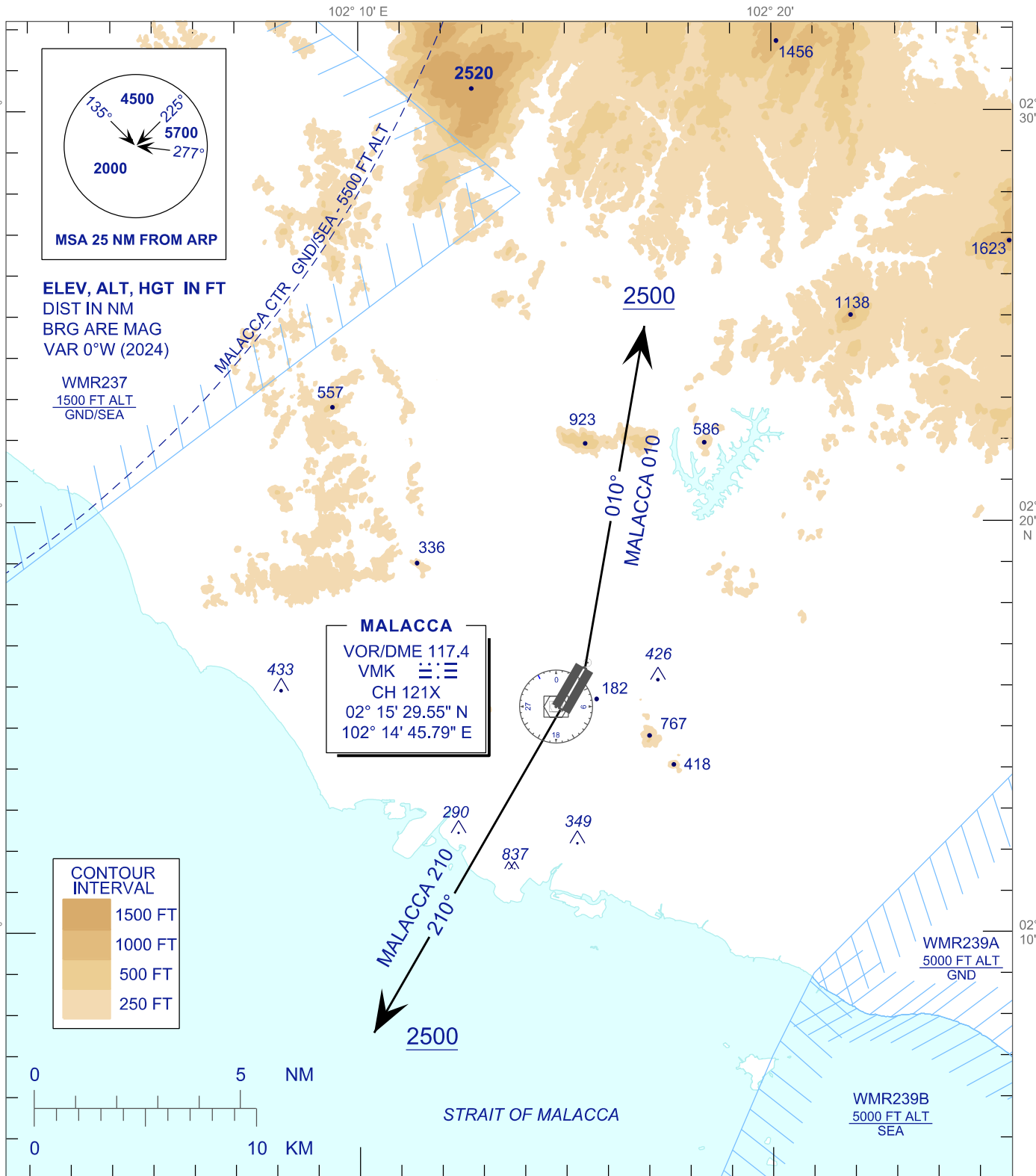


**STANDARD DEPARTURE CHART
INSTRUMENT (SID) - ICAO**

TRANSITION ALTITUDE
11000FT

TWR 118.00
SMC 121.60
ATIS 127.45

**MALACCA/MALACCA (WMKM)
RADAR DEPARTURE**



RWY 03 - MALACCA 010

AFTER TAKE-OFF, PROCEED ON TR 010 UNTIL PASSING 2500 FT, THEN FOLLOW THE ASSIGNED HEADING.

NOTE:

1. MINIMUM CLIMB GRADIENT 4.8% UNTIL PASSING 5000 FT.
2. TURN BEFORE DER IS NOT ALLOWED.

RWY 21 - MALACCA 210

AFTER TAKE-OFF, PROCEED ON TR 210 UNTIL PASSING 2500 FT, THEN FOLLOW THE ASSIGNED HEADING.

NOTE:

1. MINIMUM CLIMB GRADIENT 4.5% UNTIL PASSING 5000 FT.
2. TURN BEFORE DER IS NOT ALLOWED.