

**INSTRUMENT
APPROACH
CHART - ICAO**

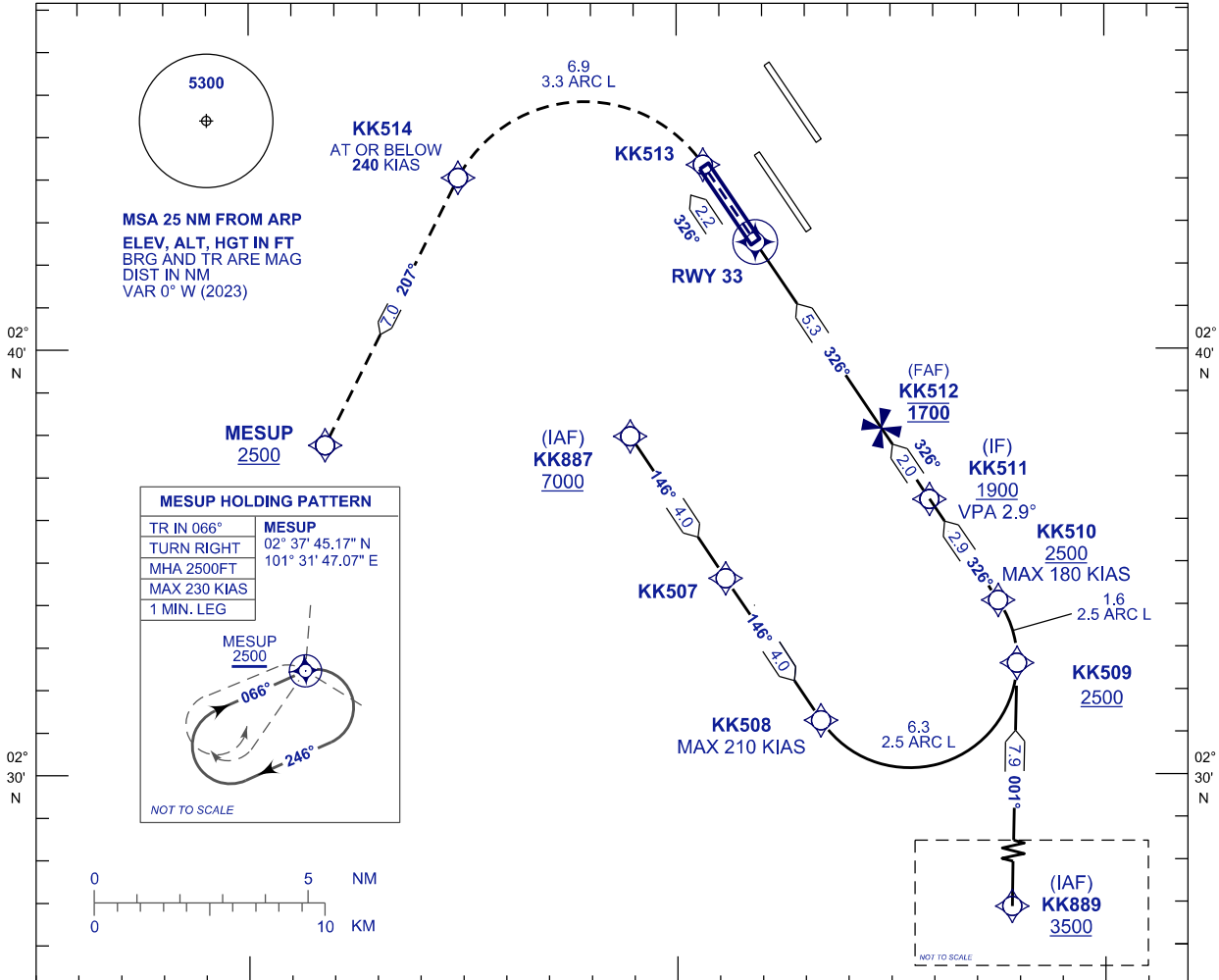
AERODROME ELEV 69 FT
HEIGHT RELATED TO
THR RWY 33 - ELEV 28 FT

APP 119.45 125.85 125.10	TWR 119.80	SMC 118.05	ATIS 128.05
-----------------------------------	---------------	---------------	----------------

**SEPANG/KL INTERNATIONAL
AIRPORT (WMKK)**

RNP Z RWY 33 (AR)

101° 30' E



MESUP HOLDING PATTERN

TR IN 066°	MESUP
TURN RIGHT	02° 37' 45.17" N
MHA 2500FT	101° 31' 47.07" E
MAX 230 KIAS	
1 MIN. LEG	

MESUP 2500

066°

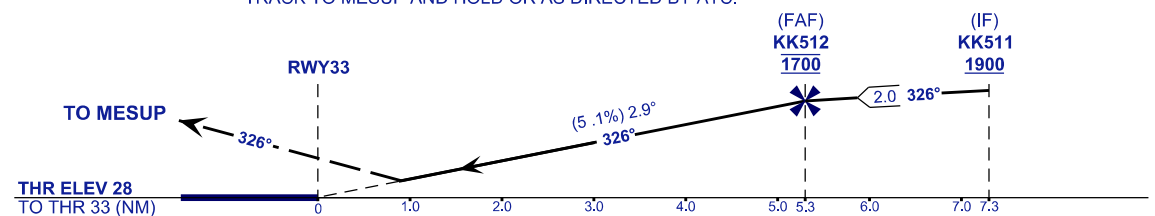
246°

NOT TO SCALE

VPA 2.9°
RDH 52FT

MISSED APPROACH
CLIMB TO 2500 FT OR ABOVE VIA RNP (AR) MISSED APPROACH,
TRACK TO MESUP AND HOLD OR AS DIRECTED BY ATC.

TRANSITION LEVEL FL130
TRANSITION ALT 11000 FT



STRAIGHT-IN APPROACH	OCA (OCH)	
CATEGORY OF AIRCRAFT	C	D
RNP (0.30)	530 (502)	
CIRCLING AND ALTERNATE N/A		

AUTHORIZATION REQUIRED

NOTES

- 1) GNSS REQUIRED.
- 2) RF REQUIRED.
- 3) APPROACH NOT AUTHORIZED WHEN AIRPORT TEMPERATURE BELOW 18°C OR ABOVE 40°C.
- 4) WMKK ALTIMETER SETTING REQUIRED.
- 5) PAPI AND VERTICAL PATH ANGLE NOT COINCIDENT.
- 6) RNP 0.30 FROM KK887 & KK889 TO THRESHOLD.
- 7) RNP 0.50 FROM RWY33 TO KK513.

DISTANCE IN NM. BEARING ARE MAGNETIC.
ELEVATION IN FEET AMSL.

CHANGES : FOR WPT KK513 CHANGE FM FLY-OVER TO FLY-BY.