

# STANDARD ARRIVAL CHART INSTRUMENT (STAR) - ICAO

**KUANTAN/SULTAN  
AHMAD SHAH (WMKD)  
RWY 18 (RNAV)**

TWR 118.1, 238.1  
GND 263.9, 120.4  
APP 119.7, 121.5  
ATIS 127.5, 253.8  
SRA 261.6, 118.7

TRANSITION ALTITUDE  
11 000 FT

ADNUT D PEKAN D  
GUNBO D KERTEH D

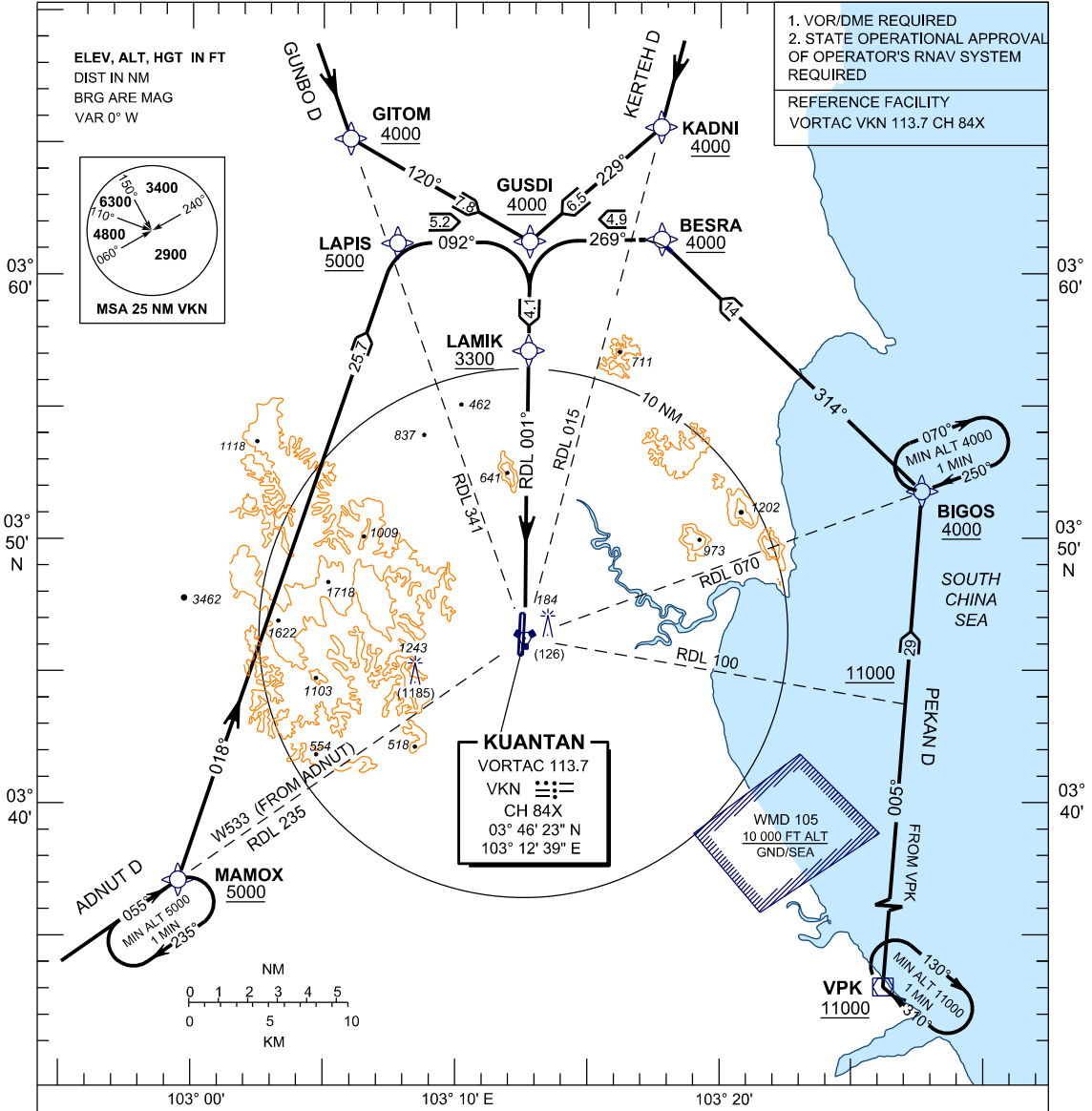
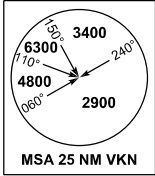
BANK ANGLE = 25° OR 3°/SEC

103° 10' E

1. VOR/DME REQUIRED  
2. STATE OPERATIONAL APPROVAL  
OF OPERATOR'S RNAV SYSTEM  
REQUIRED

REFERENCE FACILITY  
VORTAC VKN 113.7 CH 84X

ELEV, ALT, HGT IN FT  
DIST IN NM  
BRG ARE MAG  
VAR 0° W



**KUANTAN**  
VORTAC 113.7  
VKN  
CH 84X  
03° 46' 23" N  
103° 12' 39" E

WMD 105  
10 000 FT ALT  
GND/SEA

**ADNUT D ARRIVAL**

- FROM ADNUT ON W533 TO MAMOX
- AT MAMOX TURN LEFT TO LAPIS THENCE TO GUSDI
- INTERCEPT RDL 001 VKN

**KERTEH D ARRIVAL**

- FROM KERTEH (VKP) ON W533 TO KADNI
- AT KADNI TURN RIGHT TO GUSDI
- INTERCEPT RDL 001 VKN

**GUNBO D ARRIVAL**

- FROM GUNBO ON RDL 341 VKN TO GITOM
- AT GITOM TURN LEFT TO GUSDI
- INTERCEPT RDL 001 VKN

**PEKAN D ARRIVAL**

- FROM PEKAN (VPK) DIRECT TO BIGOS
- AT BIGOS TURN LEFT TO BESRA THENCE TO GUSDI
- INTERCEPT RDL 001 VKN

**VERTICAL RESTRICTIONS**

ADHERE TO VERTICAL RESTRICTIONS EG. 5000 = NOT BELOW 5000 FT ON DESCENT UNLESS SPECIFICALLY CANCELLED BY ATC

**COMMUNICATION FAILURE:**

- \* SQUAWK 7600
- \* IF UNDER PILOT NAVIGATION, CONTINUE ON STAR AND LAND
- \* IF UNDER 'RADAR VECTORED': MAINTAIN VECTOR FOR 1 MINUTE
- \* IF BELOW 'MSA', CLIMB TO 'MSA', THEN TRACK TO INTERCEPT CLEARED OR PREVIOUSLY ASSIGNED STAR AND LAND

CHANGES : REMOVE TRACK BETWEEN WPT LAPIS AND LAMIK,  
REMOVE TRACK BETWEEN WPT BESRA AND LAMIK.