

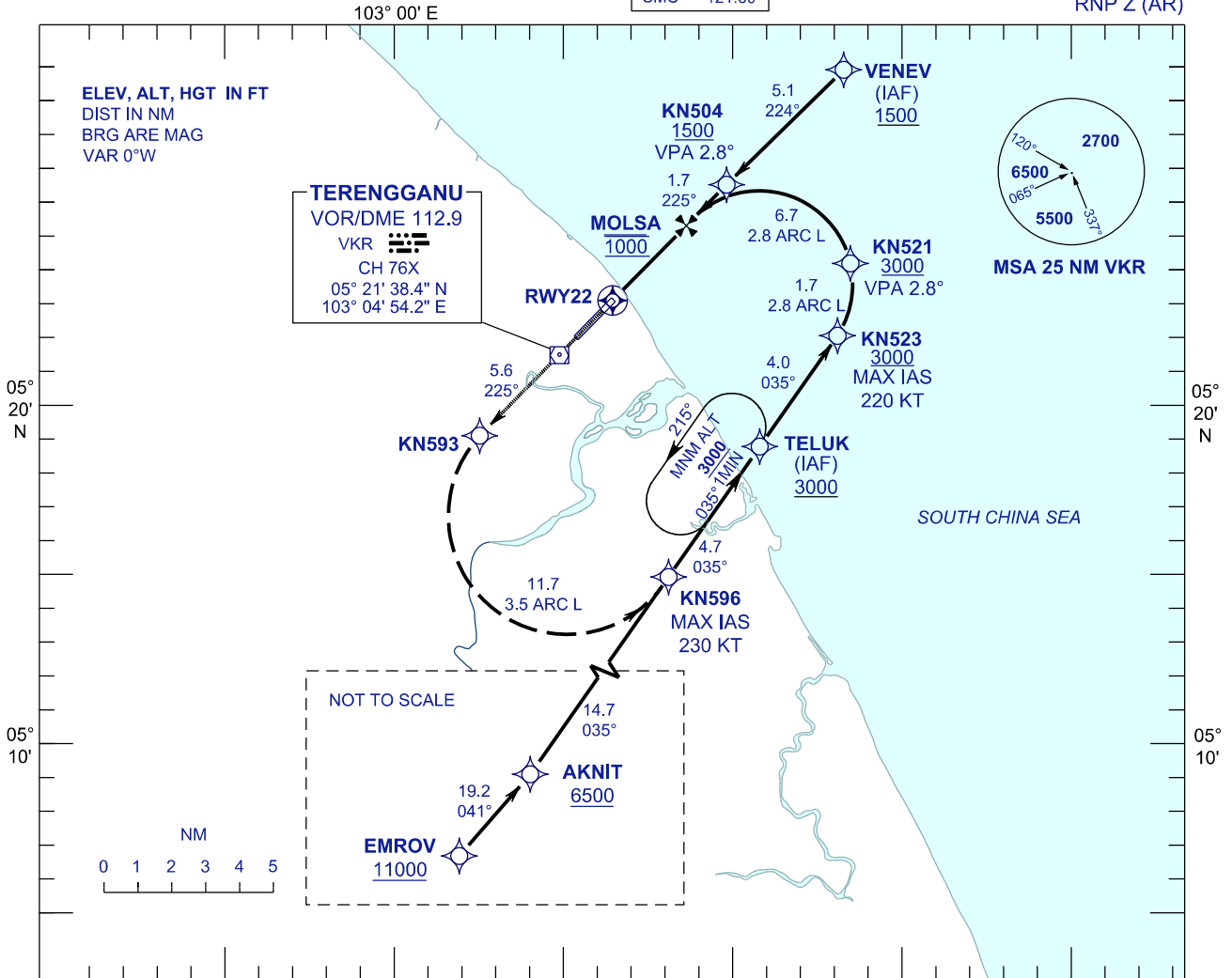
**INSTRUMENT
APPROACH
CHART - ICAO**

AERODROME ELEV 20 FT
HEIGHT RELATED TO
THR RWY 22 - ELEV 20 FT

**KUALA TERENGGANU/
SULTAN MAHMUD (WMKN)
RWY22**

APP	123.6
	235.32
	121.5
ATIS	126.65
TWR	119.05
SMC	121.60

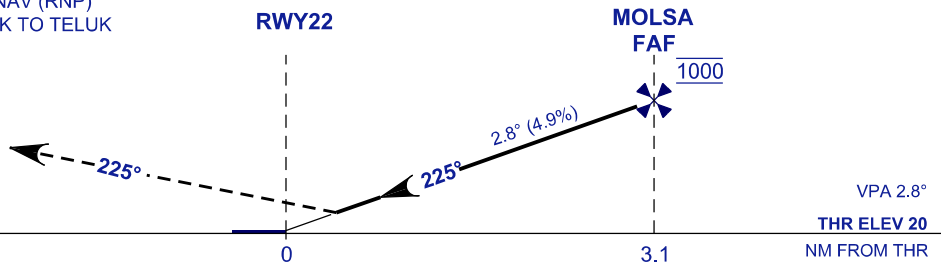
RNP Z (AR)



MISSED APPROACH
CLIMB TO 3000 VIA THE RNAV (RNP)
MISSED APPROACH TRACK TO TELUK
OR AS DIRECTED BY ATC

TRANSITION LEVEL FL 130
TRANSITION ALT 11000

RDH 50 FT



OCA/H		
ACFT CAT.	C	D
RNP 0.3	466 (446) 2.1KM	

GROUND SPEED - KT	70	90	100	120	140	160
RATE OF DESCENT (2.8°) (FT/MIN)	347	446	495	594	693	792

DISTANCE TO THRESHOLD (NM)	3.1	2	1
ALTITUDE (FT)	1000	670	370

- 1. AUTHORIZATION REQUIRED
- 2. GNSS REQUIRED
- 3. RF REQUIRED
- 4. APPROACH NOT AUTHORIZED WHEN AIRPORT TEMPERATURE BELOW 20°C OR ABOVE 34°C
- 5. WMKN ALTIMETER SETTING REQUIRED.
- 6. PAPI AND VERTICAL PATH ANGLE NOT COINCIDENT
- 7. PROCEDURE REQUIRES RNP 1.0 IN FEEDER SEGMENTS
- 8. PROCEDURE REQUIRES RNP 0.3 FROM IAF TO RWY
- 9. VSS DOES NOT TAKE INTO ACCOUNT TRANSIENT OBJECTS.

CHANGES : AERODROME AND THRESHOLD ELEVATION