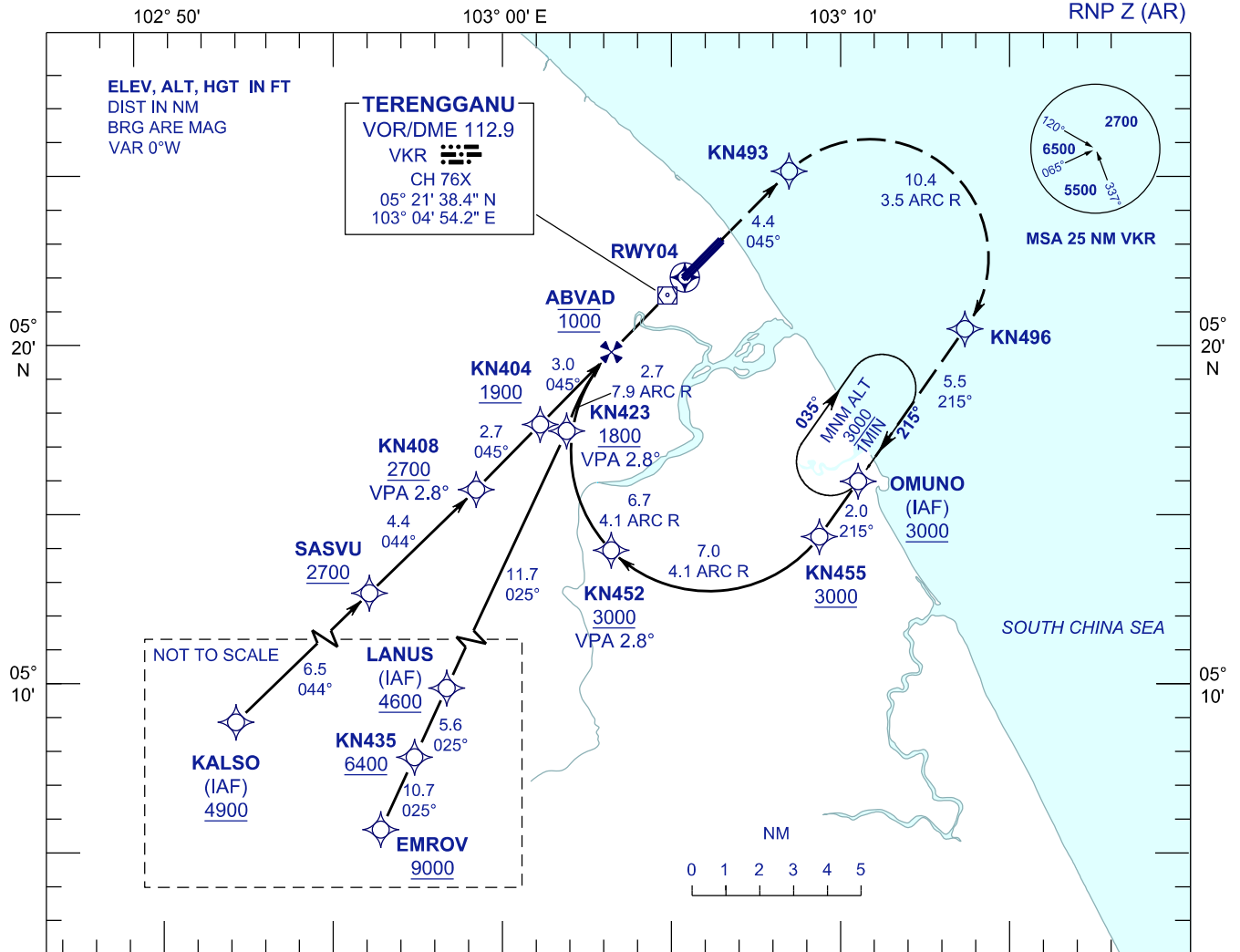


**INSTRUMENT
APPROACH
CHART - ICAO**

**AERODROME ELEV 20 FT
HEIGHT RELATED TO
THR RWY 04 - ELEV 19 FT**

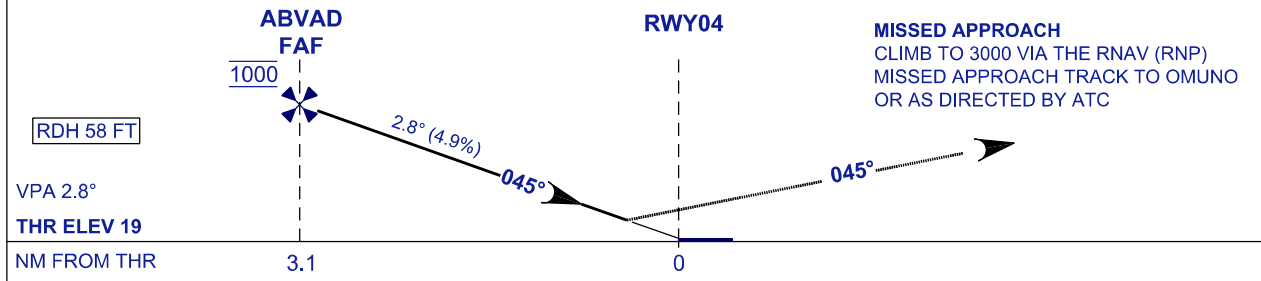
APP	123.6
	235.32
	121.5
ATIS	126.65
TWR	119.05
SMC	121.60

**KUALA TERENGGANU/
SULTAN MAHMUD (WMKN)
RWY 04**



102° 50' 103° 00' E 103° 10' RNP Z (AR)

TRANSITION LEVEL FL 130
TRANSITION ALT 11000



OCA/H		GROUND SPEED - KT						
ACFT CAT.	C	D	70	90	100	120	140	160
RNP 0.3	459 (440) 1.5KM		RATE OF DESCENT (2.8°) (FT/MIN)					
			347	446	495	594	693	792
			DISTANCE TO THRESHOLD (NM)		3.1	2	1	
			ALTITUDE (FT)		1000	670	370	

- 1. AUTHORIZATION REQUIRED**
- 2. GNSS REQUIRED**
- 3. RF REQUIRED**
- 4. APPROACH NOT AUTHORIZED WHEN AIRPORT TEMPERATURE BELOW 20°C OR ABOVE 34°C
- 5. WMKN ALTIMETER SETTING REQUIRED.
- 6. PAPI AND VERTICAL PATH ANGLE NOT COINCIDENT
- 7. PROCEDURE REQUIRES RNP 1.0 IN FEEDER SEGMENTS
- 8. PROCEDURE REQUIRES RNP 0.3 FROM IAF TO RWY

CHANGES : AERODROME AND THRESHOLD ELEVATION