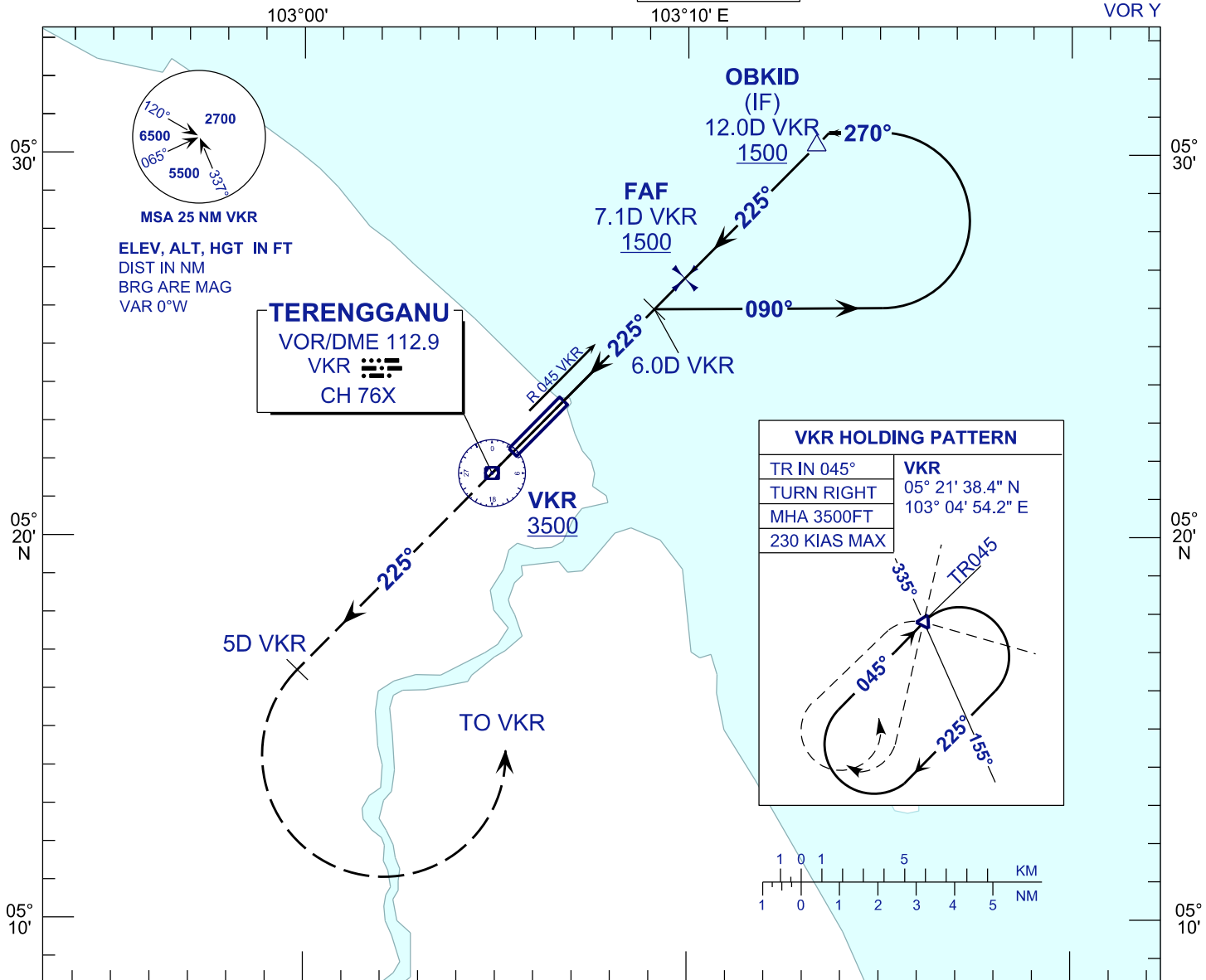


INSTRUMENT APPROACH CHART - ICAO

AERODROME ELEV 20 FT
HEIGHT RELATED TO
THR RWY 22 - ELEV 20 FT

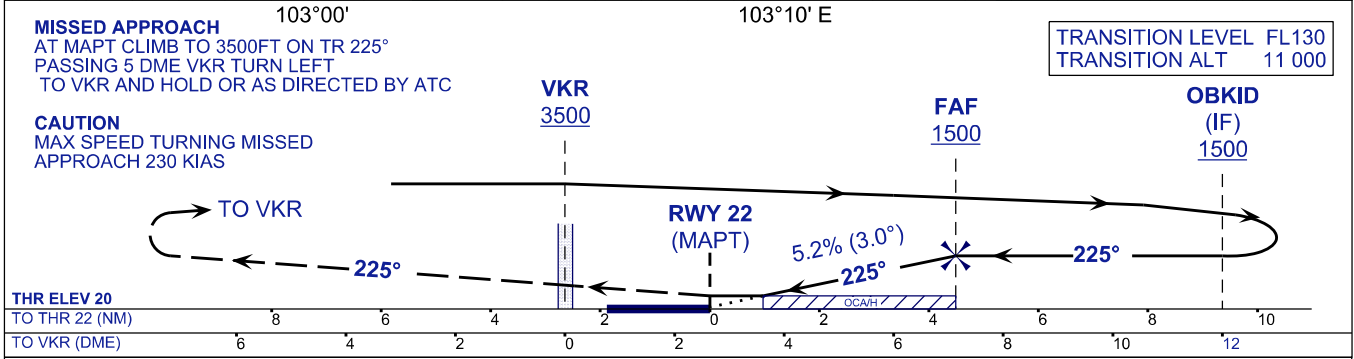
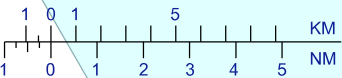
APP	123.6
	235.32
	121.5
TWR	119.05
SMC	121.6
ATIS	126.65

**KUALA TERENGGANU/
SULTAN MAHMUD (WMKN)
RWY 22**



VKR HOLDING PATTERN

TR IN 045°	VKR
TURN RIGHT	05° 21' 38.4" N
MHA 3500FT	103° 04' 54.2" E
230 KIAS MAX	



OCA/OCH	A	B	C	D	DME VKR	NM	7.1	6.1	5.1	4.1	3.1	
VOR/DME	380/(360)				DIST THR/RWY22	NM	4.5	3.5	2.5	1.5	0.5	
					ALTITUDE	FT	1500	1185	867	548	230	
					GS	KT	80	100	120	140	160	180
					FAF - RWY22 (4.5NM)	MIN:SEC	3:22	2:42	2:15	1:55	1:41	1:30
					RATE OF DESCEND(318.5FT/NM)	FT/MIN	420	530	640	740	850	960

CHANGES : AERODROME AND THRESHOLD ELEVATION