

AIRCRAFT PARKING/ DOCKING CHART - ICAO

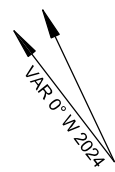
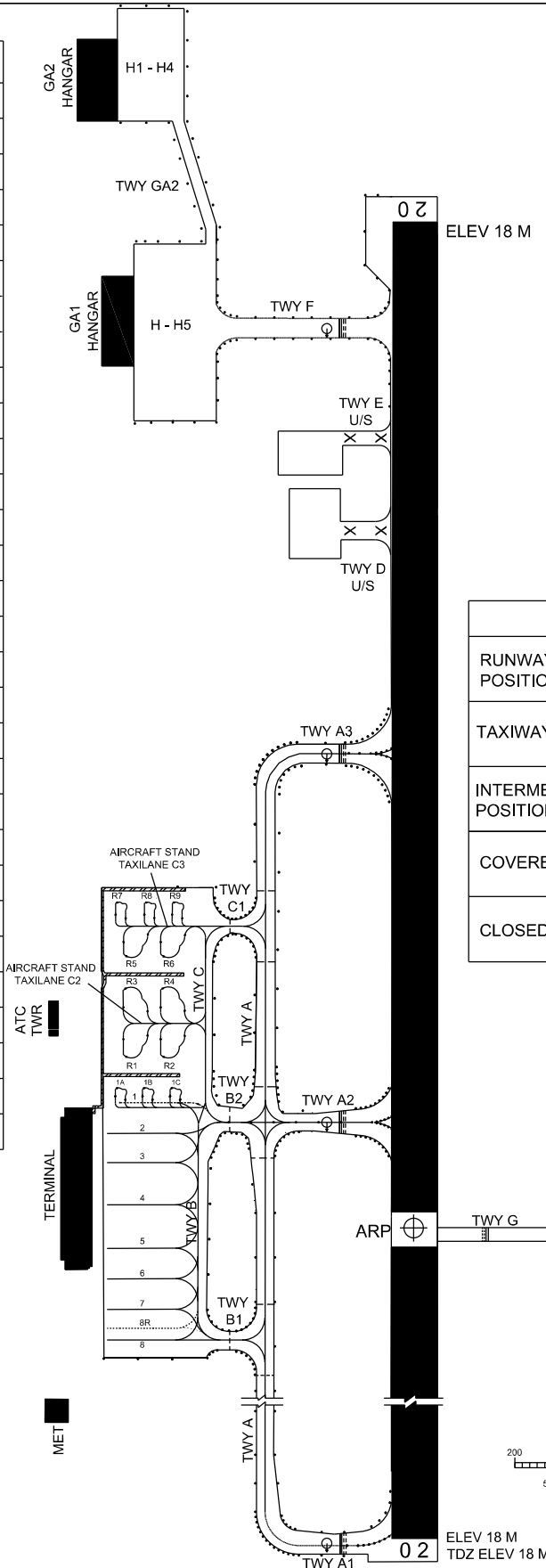
APRON ELEV
16 M

TWR 123.30
APP 129.90
122.70
SMC 121.90
CATIS 127.0

MIRI/MIRI AIRPORT

AIRCRAFT PARKING/DOCKING STAND POSITION

INS COORDINATES FOR AIRCRAFT STANDS	AIRCRAFT TYPE
1 4° 19' 31.63" N 113° 59' 03.96" E	AT75, AT76
1A 4° 19' 32.04" N 113° 59' 04.85" E	DHC-6
1B 4° 19' 31.54" N 113° 59' 05.92" E	DHC-6
1C 4° 19' 31.04" N 113° 59' 07.00" E	DHC-6
2 4° 19' 30.23" N 113° 59' 03.91" E	A320, A319, B738
3 4° 19' 29.40" N 113° 59' 02.93" E	A320, A319, B738
4 4° 19' 27.72" N 113° 59' 02.17" E	B772, A333, A21N, A321, A320, A319, B738
5 4° 19' 25.90" N 113° 59' 01.57" E	A21N, A321, A320, B738, AT75
6 4° 19' 24.69" N 113° 59' 01.01" E	A21N, A321, A320, B738, AT75
7 4° 19' 23.48" N 113° 59' 0.45" E	A21N, A321, A320, B738, AT75
8 4° 19' 22.27" N 113° 58' 59.89" E	A21N, A321, A320, B738, AT75
8R 4° 19' 22.68" N 113° 59' 00.24" E	A333, B772, B762, B752
R1 4° 19' 33.30" N 113° 59' 06.34" E	AT75, AT76
R2 4° 19' 32.61" N 113° 59' 07.80" E	AT75, AT76
R3 4° 19' 35.10" N 113° 59' 07.16" E	AT75, AT76
R4 4° 19' 34.42" N 113° 59' 08.62" E	AT75, AT76
R5 4° 19' 37.23" N 113° 59' 08.23" E	AT75, AT76
R6 4° 19' 36.55" N 113° 59' 09.69" E	AT75, AT76
R7 4° 19' 39.22" N 113° 59' 08.22" E	DHC-6
R8 4° 19' 38.72" N 113° 59' 09.28" E	DHC-6
R9 4° 19' 38.22" N 113° 59' 10.35" E	DHC-6
HGA1 4° 19' 58.13" N 113° 59' 18.50" E	HELICOPTER
H2GA1 4° 20' 03.96" N 113° 59' 22.42" E	HELICOPTER
H3GA1 4° 20' 03.55" N 113° 59' 23.30" E	HELICOPTER
H4GA1 4° 20' 02.76" N 113° 59' 21.87" E	HELICOPTER
H5GA1 4° 20' 02.02" N 113° 59' 20.84" E	HELICOPTER
H1GA2 4° 20' 10.55" N 113° 59' 23.60" E	HELICOPTER
H2GA2 4° 20' 11.68" N 113° 59' 24.13" E	HELICOPTER
H3GA2 4° 20' 12.81" N 113° 59' 24.65" E	HELICOPTER
H4GA2 4° 20' 13.93" N 113° 59' 25.17" E	HELICOPTER



ANNUAL RATE OF CHANGE -0° 4' 10" W
ELEVATIONS AND DIMENSIONS
IN METRES
BEARINGS ARE MAGNETIC

LEGEND	
RUNWAY-HOLDING POSITION	
TAXIWAY LIGHT	
INTERMEDIATE HOLDING POSITION	
COVERED WALKWAY	
CLOSED MARKING	

APRON PARKING BAYS 1, 1A, 1B AND 1C
PCN 45R/C/X/T & PCN 80F/C/W/T

APRON PARKING BAYS 2 AND 3
PCN 56R/C/X/U & PCN 80F/C/W/T

APRON PARKING BAY 4
PCN 75R/C/X/T & PCN 80F/C/W/T

APRON PARKING BAYS 5, 6, 7, 8 AND 8R
PCN 85R/C/W/T & PCN 80F/C/W/T

APRON PARKING BAYS R1 TO R4
PCN 51R/A/W/T

APRON PARKING BAYS R5 TO R9
PCN 94R/A/W/T

APRON PARKING GA1
PCN 80R/C/W/T

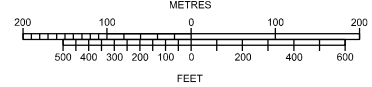
APRON PARKING GA2
PCN 45R/C/X/T & PCN 13F/C/W/T

TAXIWAYS A, A1, A2, A3, B, B1, B2 AND F 23 M WIDE
TAXIWAYS C AND C1 18 M WIDE
TAXIWAYS G AND GA2 15 M WIDE
AIRCRAFT STAND TAXILANES C2 AND C3 15 M WIDE

BEARING STRENGTH TWY A, A1 AND A3 PCN 100F/A/W/T
BEARING STRENGTH TWY A2 AND B2 PCN 100F/B/W/T
BEARING STRENGTH TWY B, B1 AND C1 PCN 80F/C/W/T
BEARING STRENGTH TWY C PCN 80F/C/W/T & PCN 51R/A/W/T
BEARING STRENGTH TWY F PCN 28F/B/W/T
BEARING STRENGTH TWY G AND GA2 PCN 13F/C/W/T
AIRCRAFT STAND TAXILANE C2 PCN 51R/A/W/T
AIRCRAFT STAND TAXILANE C3 PCN 94R/A/W/T

TAXIWAY EDGE LIGHTS ON TWY A, A1, A2, A3, B1, B2, C1, F AND GA2
TAXIWAY CENTRELINE LIGHTS ON A1, A2 AND A3

AIRCRAFT STANDS 2 TO 4 FMT APIS ++ EQUIPPED



CHANGE : ADD INFO ON CLOSED MARKING
ADD INFO ON TAXIWAY EDGE AND CENTRE LINE LIGHTS
CHANGE INFO ON AIRCRAFT TYPE
CHANGE INFO ON AIRCRAFT STAND COORDINATE BAY 2
CHANGE INFO ON BEARING STRENGTH FOR APRON AND TWY C
CHANGE INFO ON MAGNETIC VARIATION AND ANNUAL RATE CHANGE