

**INITIAL
APPROACH
CHART**

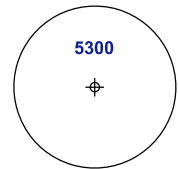
TRANSITION ALT 11000
AERODROME ELEV 69 FT

APP	121.250	TWR	118.800
	124.200	GND	121.650
	118.650	ATIS	128.050
	125.850		
	135.750		

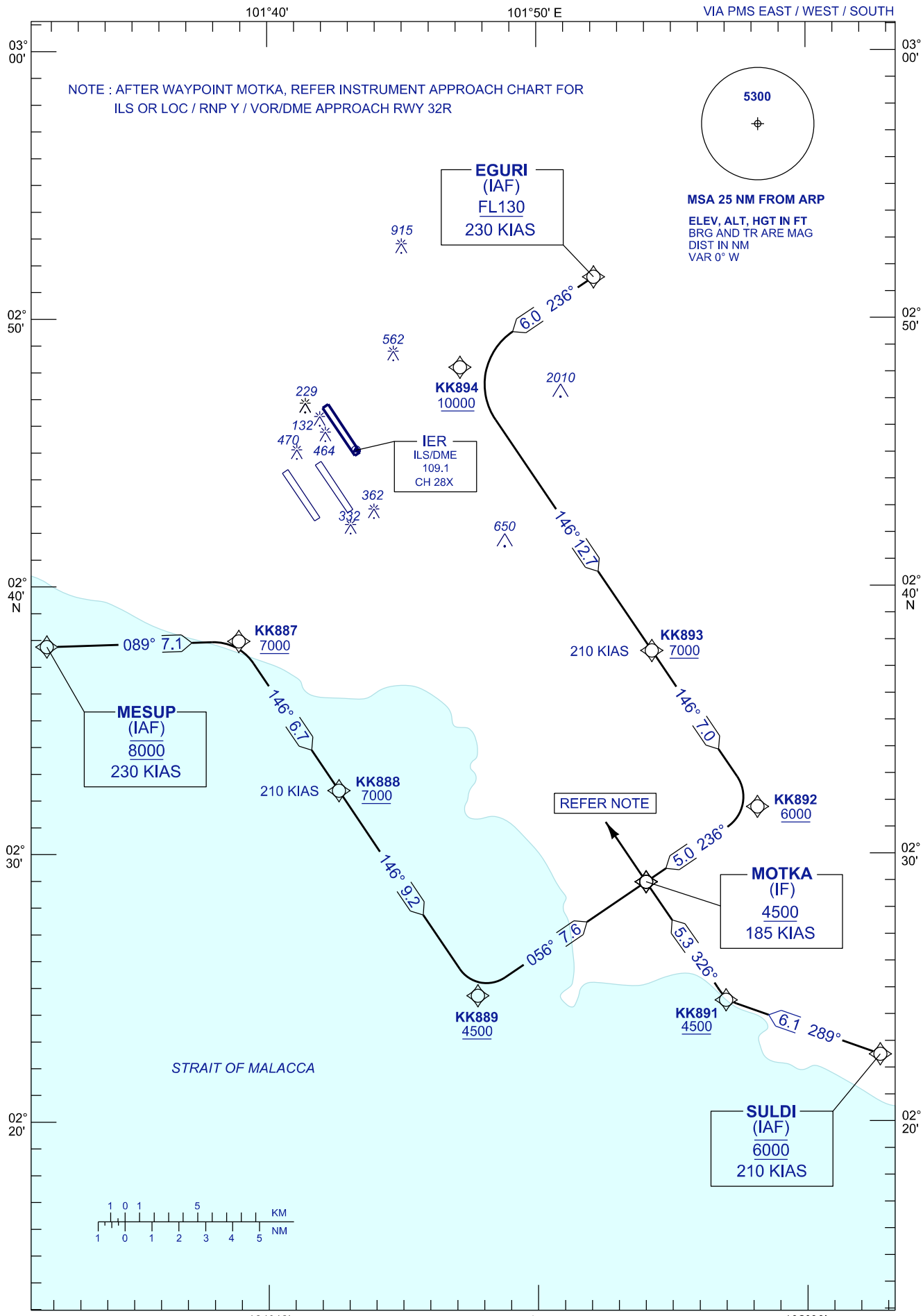
**SEPANG/KL INTERNATIONAL
AIRPORT (WMKK)
RWY 32R**

INITIAL APPROACH PROCEDURE
VIA PMS EAST / WEST / SOUTH

NOTE : AFTER WAYPOINT MOTKA, REFER INSTRUMENT APPROACH CHART FOR
ILS OR LOC / RNP Y / VOR/DME APPROACH RWY 32R



MSA 25 NM FROM ARP
ELEV, ALT, HGT IN FT
BRG AND TR ARE MAG
DIST IN NM
VAR 0° W



**MESUP
(IAF)
8000
230 KIAS**

**EGURI
(IAF)
FL130
230 KIAS**

**IER
ILS/DME
109.1
CH 28X**

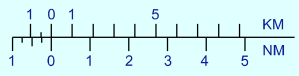
**KK887
7000**

**KK888
7000**

**KK889
4500**

**MOTKA
(IF)
4500
185 KIAS**

**SULDI
(IAF)
6000
210 KIAS**



CHANGES : REMOVE RNAV (GNSS) FROM CHART TITLE,
AMEND NOTE.