

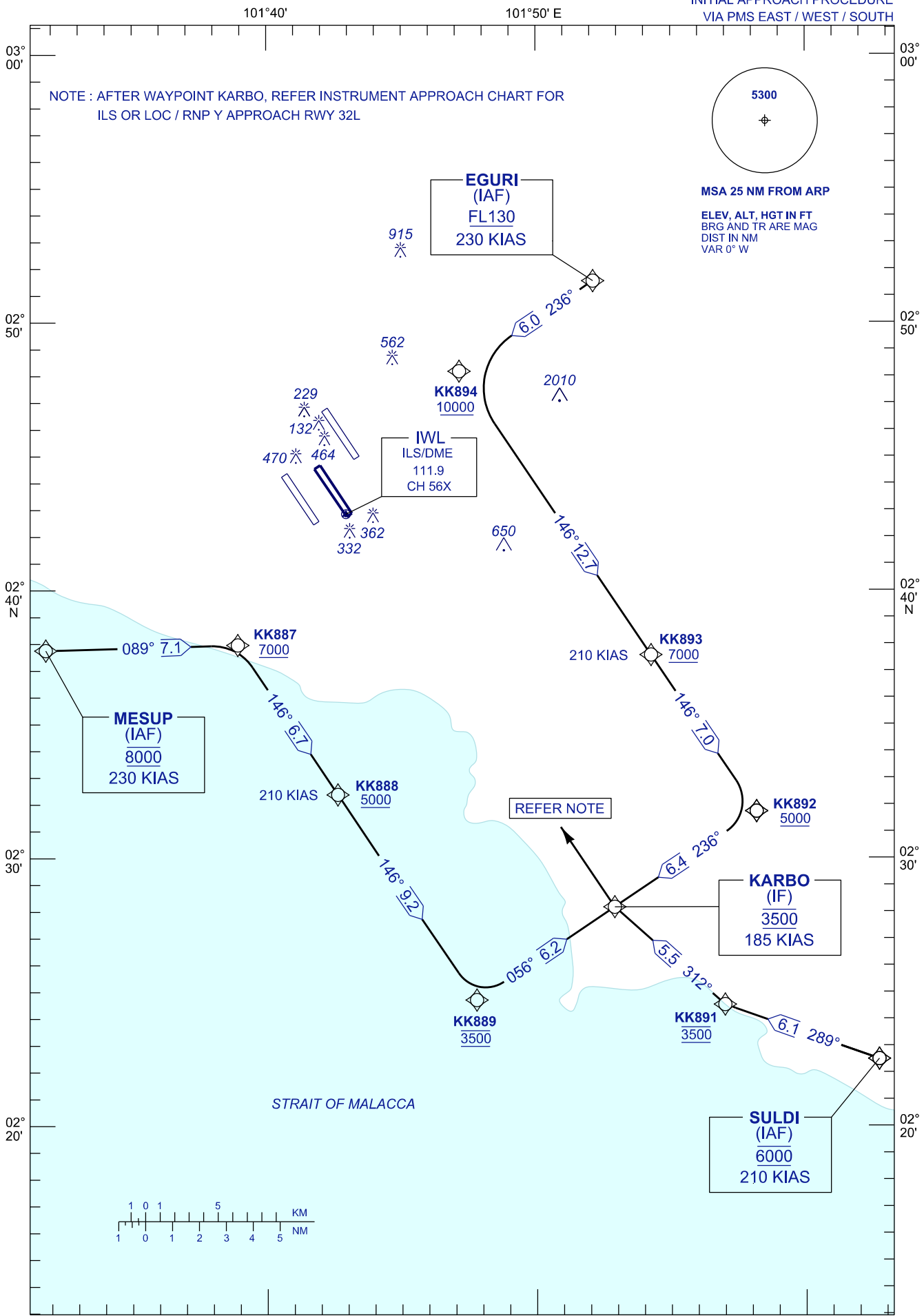
**INITIAL  
APPROACH  
CHART**

TRANSITION ALT 11000  
AERODROME ELEV 69 FT

APP	121.250	TWR	118.500
	124.200	GND	121.800
	118.650		122.525
	125.850	ATIS	128.050
	135.750		

**SEPANG/KL INTERNATIONAL  
AIRPORT (WMKK)  
RWY 32L**

INITIAL APPROACH PROCEDURE  
VIA PMS EAST / WEST / SOUTH

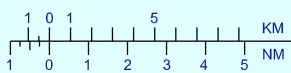


NOTE : AFTER WAYPOINT KARBO, REFER INSTRUMENT APPROACH CHART FOR ILS OR LOC / RNP Y APPROACH RWY 32L

5300  
MSA 25 NM FROM ARP  
ELEV, ALT, HGT IN FT  
BRG AND TR ARE MAG  
DIST IN NM  
VAR 0° W

REFER NOTE

STRAIT OF MALACCA



CHANGES : REMOVE RNAV (GNSS) FROM CHART TITLE,  
AMEND NOTE.