

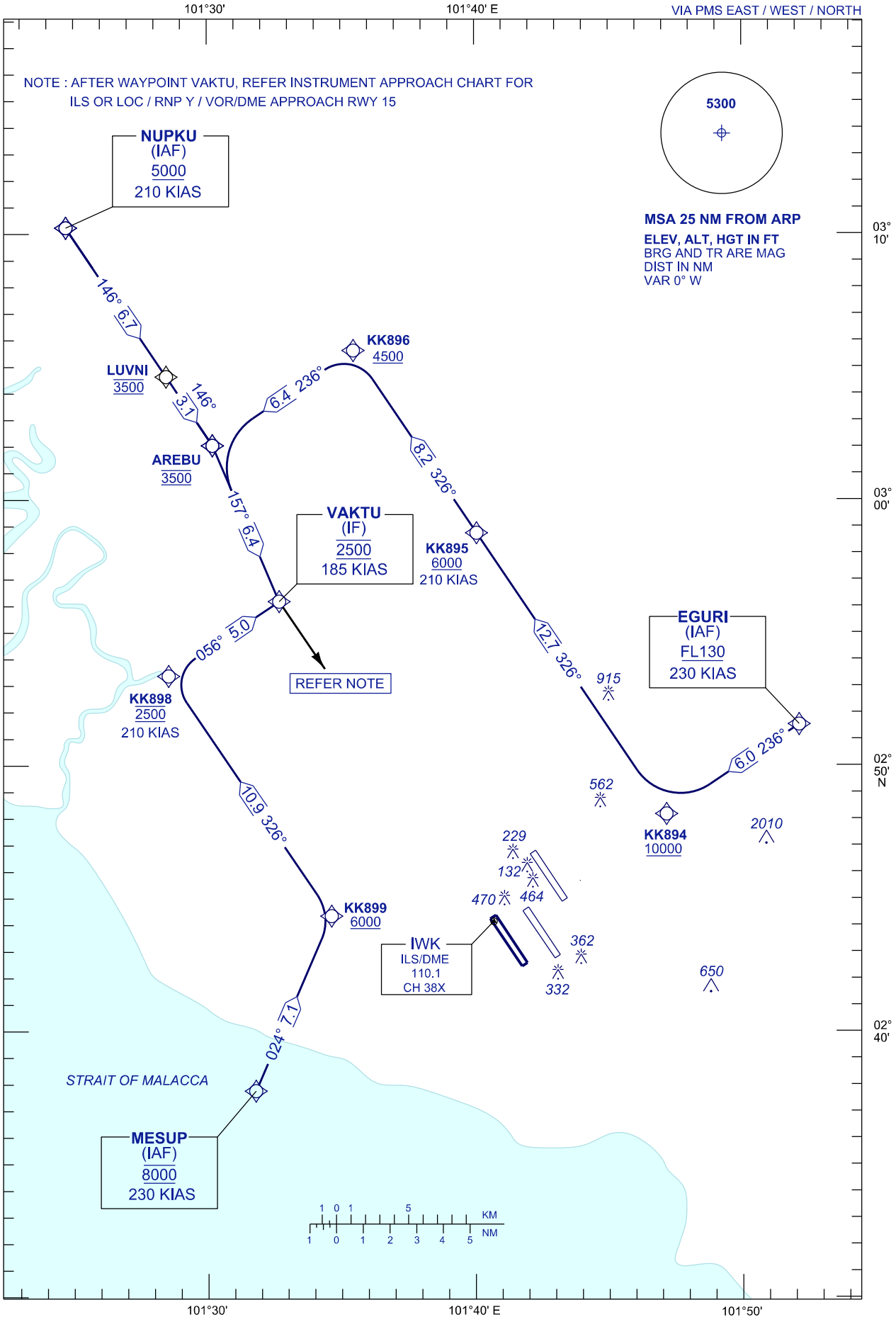
**INITIAL
APPROACH
CHART**

TRANSITION ALT 11000
AERODROME ELEV 69 FT

| | | | | |
|-----|---------|-----|---------|---------|
| APP | 121.250 | TWR | 119.800 | |
| | 124.200 | | GND | 118.050 |
| | 118.650 | | | ATIS |
| | 125.850 | | | |
| | 135.750 | | | |

**SEPANG/KL INTERNATIONAL
AIRPORT (WMKK)
RWY 15**

INITIAL APPROACH PROCEDURE
VIA PMS EAST / WEST / NORTH



CHANGES : REMOVE RNAV (GNSS) FROM CHART TITLE,
AMEND NOTE.