

**INITIAL
APPROACH
CHART**

TRANSITION ALT 11000
AERODROME ELEV 69 FT

APP	121.250	TWR	118.800
	124.200		GND
	118.650	ATIS	
	125.850		
	135.750		

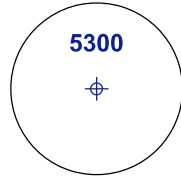
**SEPANG/KL INTERNATIONAL
AIRPORT (WMKK)
RWY 14L**

INITIAL APPROACH PROCEDURE
VIA PMS EAST / WEST / NORTH

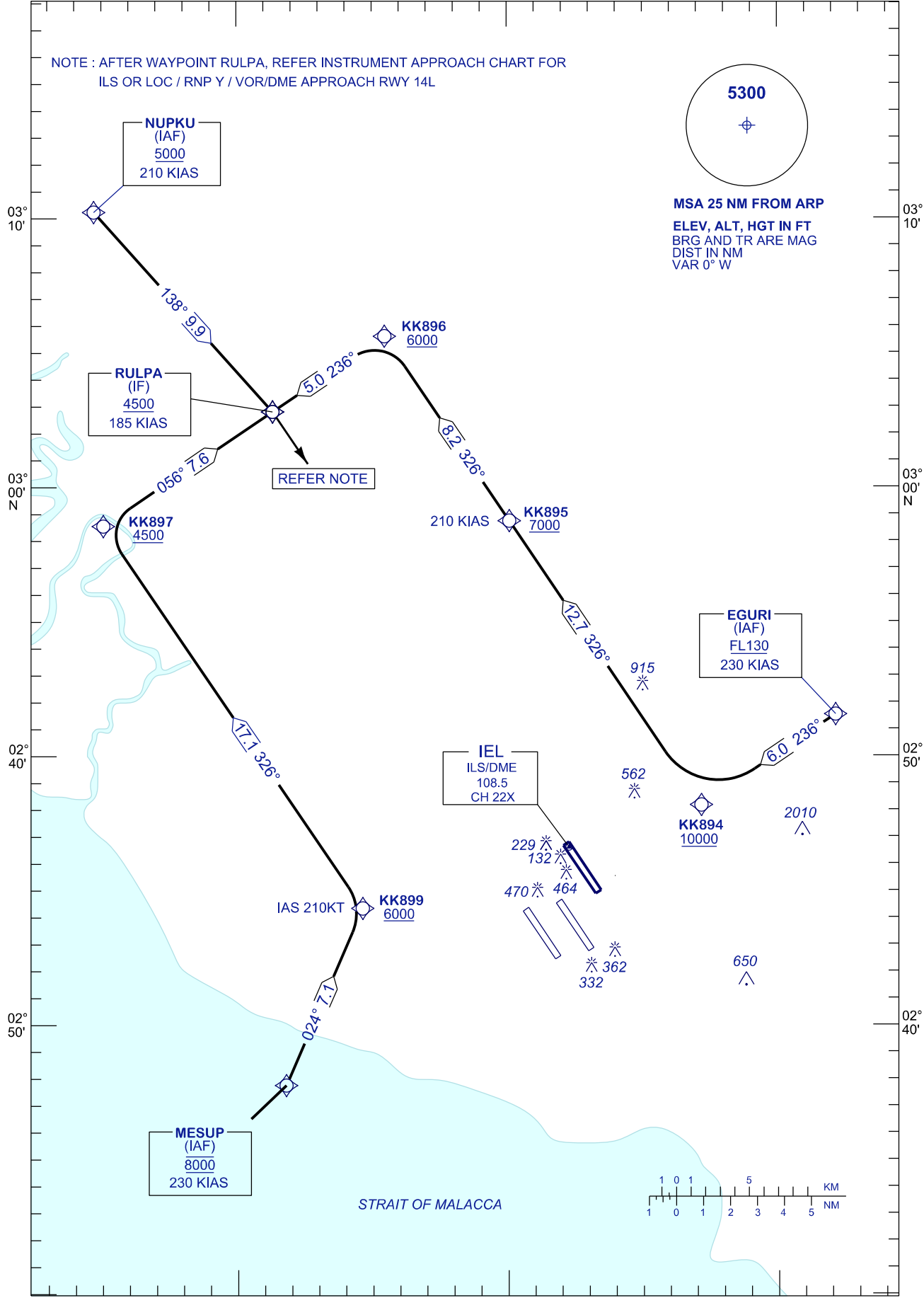
101°30'

101°40' E

NOTE : AFTER WAYPOINT RULPA, REFER INSTRUMENT APPROACH CHART FOR
ILS OR LOC / RNP Y / VOR/DME APPROACH RWY 14L



MSA 25 NM FROM ARP
ELEV, ALT, HGT IN FT
BRG AND TR ARE MAG
DIST IN NM
VAR 0° W



CHANGES : REMOVE RNAV (GNSS) FROM CHART TITLE,
AMEND NOTE.