

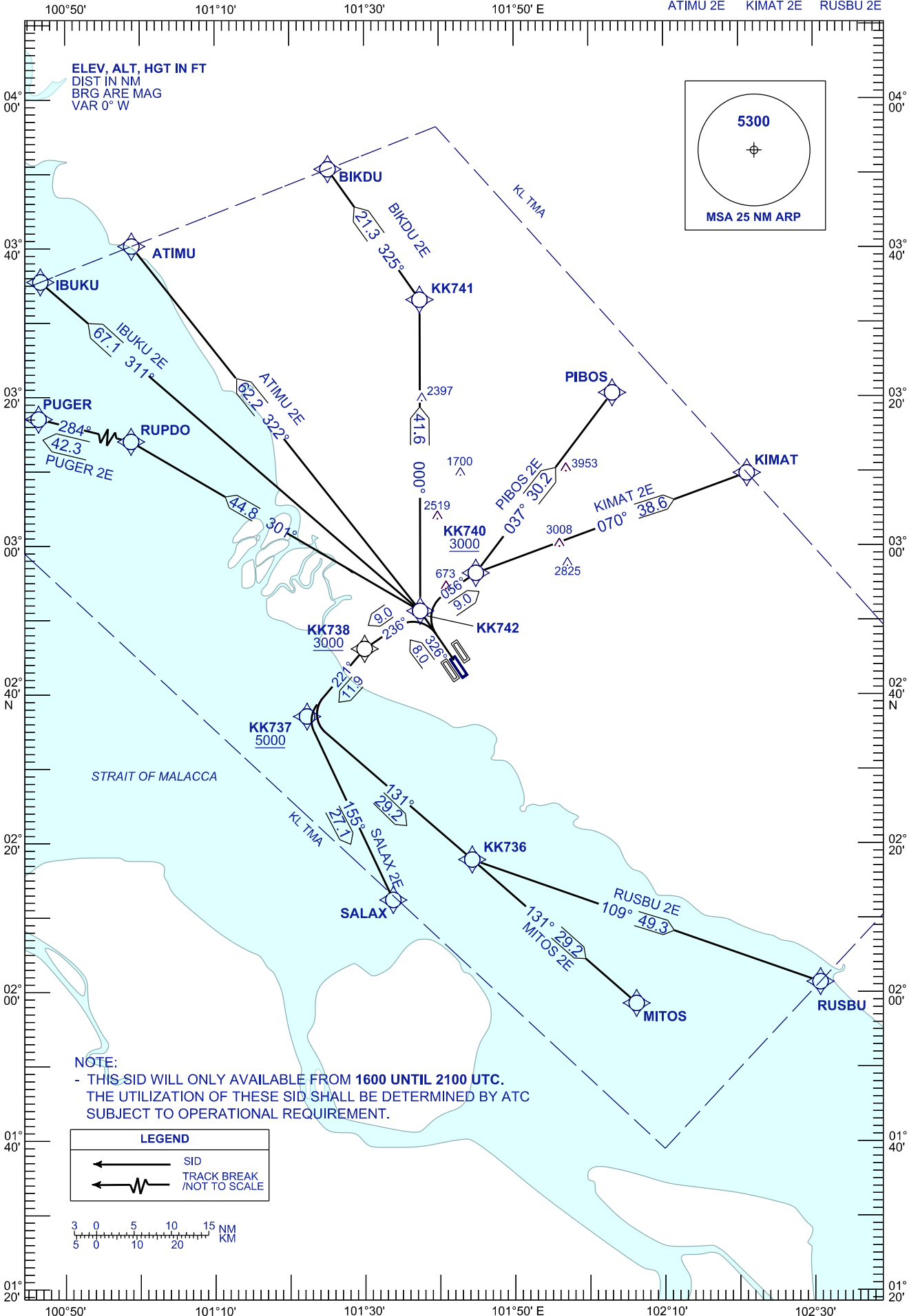
# STANDARD DEPARTURE CHART INSTRUMENT (SID) - ICAO

TRANSITION ALT 11000 FT

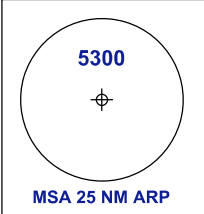
APP	124.200	TWR	118.500
	118.650		GND
	135.750	ATIS	126.450

## SEPANG/KL INTERNATIONAL AIRPORT (WMKK) RNP 1 (GNSS) RWY 32L

PUGER 2E BIKDU 2E SALAX 2E  
IBUKU 2E PIBOS 2E MITOS 2E  
ATIMU 2E KIMAT 2E RUSBU 2E

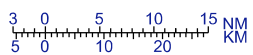


ELEV, ALT, HGT IN FT  
DIST IN NM  
BRG ARE MAG  
VAR 0° W



NOTE:  
- THIS SID WILL ONLY AVAILABLE FROM 1600 UNTIL 2100 UTC.  
THE UTILIZATION OF THESE SID SHALL BE DETERMINED BY ATC  
SUBJECT TO OPERATIONAL REQUIREMENT.

LEGEND	
	SID
	TRACK BREAK (NOT TO SCALE)



CHANGES: ATIS FREQUENCY.