

**INSTRUMENT  
APPROACH  
CHART - ICAO**

**AERODROME ELEV 43 FT  
HEIGHTS RELATED TO  
THR RWY 26 - ELEV 20 FT**

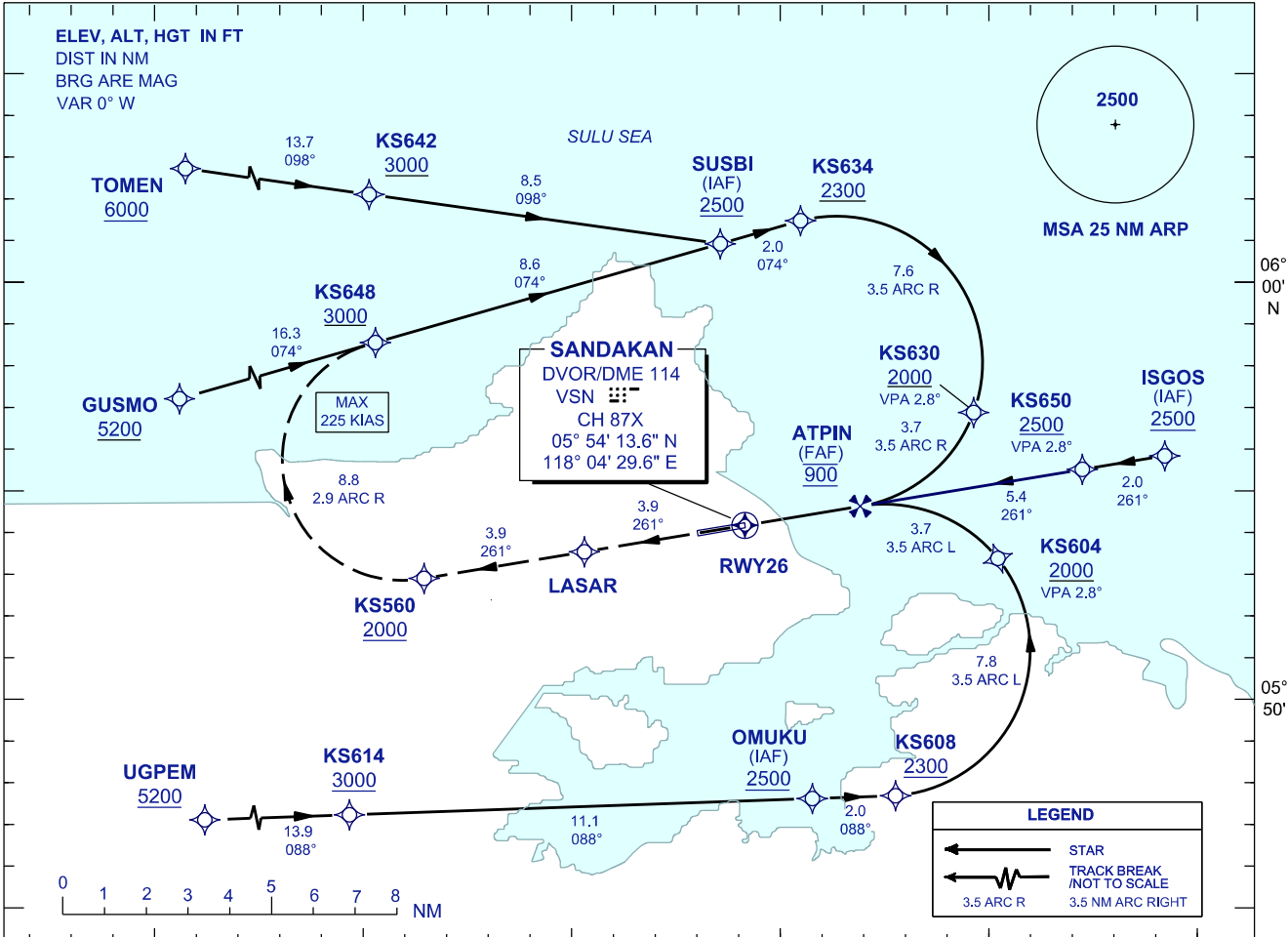
SMC 121.9  
TWR 122.05  
APP 123.2  
ATIS 128.2

**SANDAKAN/SANDAKAN  
(WBKS)**

**RNP Z RWY 26 (AR)**

117° 50'

118° 00'E



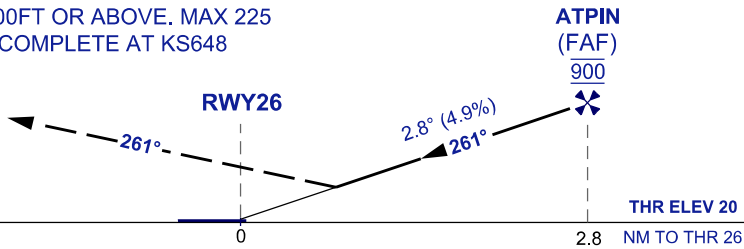
VPA 2.8°  
TCH 50FT

117° 50' 118° 00'E

TRANSITION LEVEL FL 130  
TRANSITION ALT 11000

**MISSED APPROACH**

CLIMB TO 2500FT VIA THE RNP MISSED APPROACH TRACK TO SUSBI OR AS DIRECTED BY ATC.  
CROSS KS560 AT 2000FT OR ABOVE. MAX 225 KIAS UNTIL TURN IS COMPLETE AT KS648



OCA/H	
ACFT CAT. C	D
RNP 0.3	465 (445) / 2.1 KM

GROUND SPEED - KT	70	90	100	120	140	160
RATE OF DESCENT (2.8°) ( FT/MIN )	347	446	495	594	693	792

DISTANCE TO THRESHOLD (NM)	2.8	2	1
ALTITUDE (FT)	900	670	370

- AUTHORIZATION REQUIRED**
- DUAL GNSS REQUIRED**
- RF REQUIRED**
- APPROACH NOT AUTHORIZED WHEN AIRPORT TEMPERATURE BELOW 18°C OR ABOVE 40°C
- WBKS ALTIMETER SETTING REQUIRED.
- PAPI AND VERTICAL PATH ANGLE NOT COINCIDENT
- PROCEDURE REQUIRES RNP 0.3 FROM IAFS TO LASAR
- TOGA TO NAV REQUIRED
- PROCEDURE REQUIRES RNP 1.0 IN FEEDER SEGMENTS
- CLIMB GRADIENT OF 3.7% TO 2000FT REQUIRED TO REACH KS560

**CHANGES : AMEND TCH VALUE 51FT TO READ AS 50 FT AT PROFILE VIEW.**