

# STANDARD ARRIVAL CHART INSTRUMENT (STAR) - ICAO

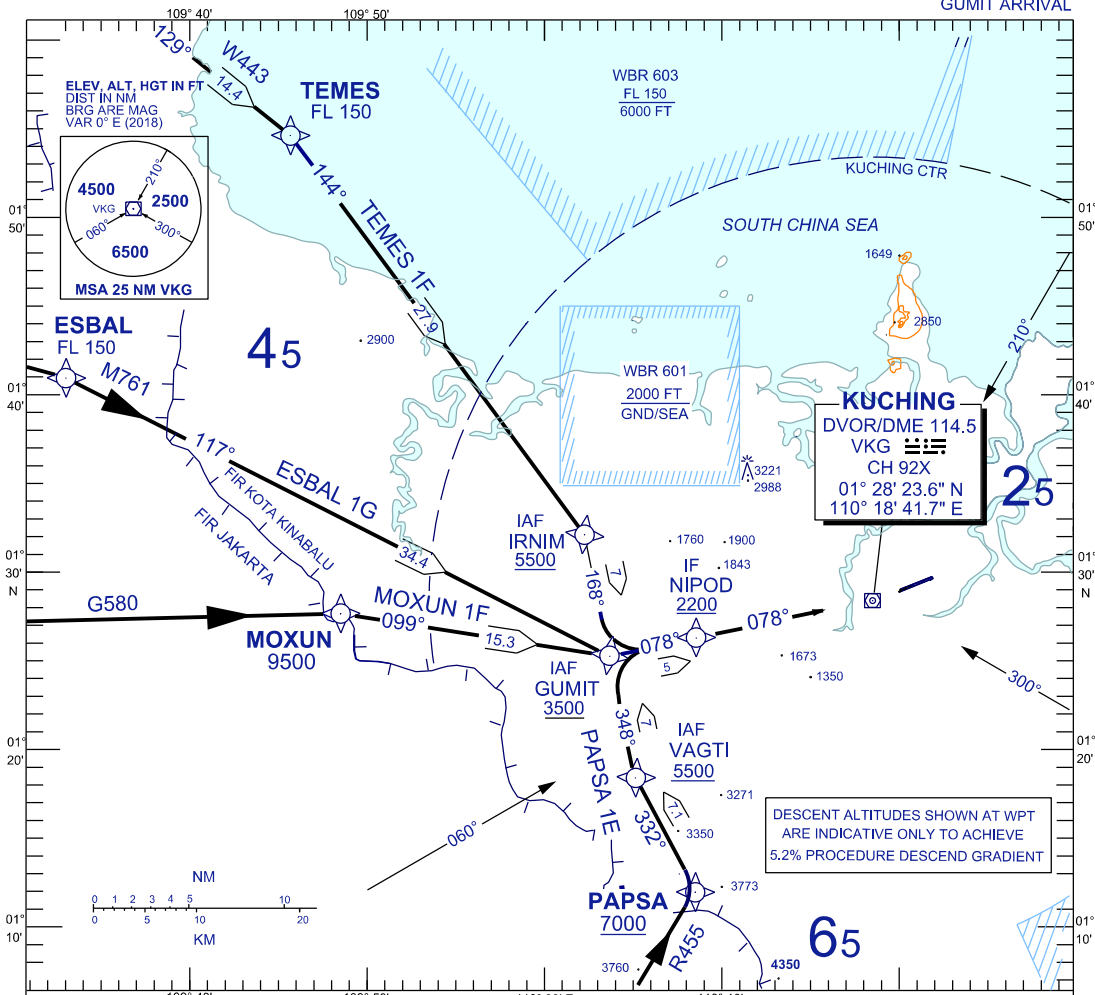
**KUCHING/KUCHING (WBGG)  
RWY 07 (RNAV)**

TRANSITION ALTITUDE  
11,000 FT

TWR	118.1 (P)	SMC	121.9
	121.7 (S)	ATIS	128.4
APP	120.2 (P)	FIS	134.75
	123.85 (S)		
ACC	134.5 (P)		
	125.35 (S)		

BANK ANGLE : 15° ACHIEVED

GUMIT ARRIVAL



## TRANSITIONS

- TEMES ONE FOXTROT :** FROM TEMES TRACK TO IRNIM, THEN TRACK TO GUMIT
- ESBAL ONE GOLF :** FROM ESBAL TRACK TO GUMIT
- MOXUN ONE FOXTROT :** FROM MOXUN TRACK TO GUMIT
- PAPSA ONE ECHO :** FROM PAPSA TRACK TO VAGTI, THEN TRACK TO GUMIT

**GUMIT ARRIVAL :** FROM GUMIT TRACK TO NIPOD TO INTERCEPT RDL 258 VKG

## VERTICAL RESTRICTIONS :

ADHERE TO VERTICAL RESTRICTIONS eg . 5500 = NOT BELOW 5500 FT ON DESCENT UNLESS SPECIFICALLY CANCELLED BY ATC

## COMMUNICATIONS FAILURE :

- \* SQUAWK 7600
- \* IF UNDER PILOT NAVIGATION, CONTINUE ON STAR AND LAND
- \* IF UNDER RADAR VECTORED, MAINTAIN VECTOR FOR 1 MINUTE, IF BELOW MSA, CLIMB TO MSA, THEN TRACK TO INTERCEPT CLEARED OR PREVIOUSLY ASSIGNED STAR AND LAND

CHANGES : IGEVU TO ESBAL.