

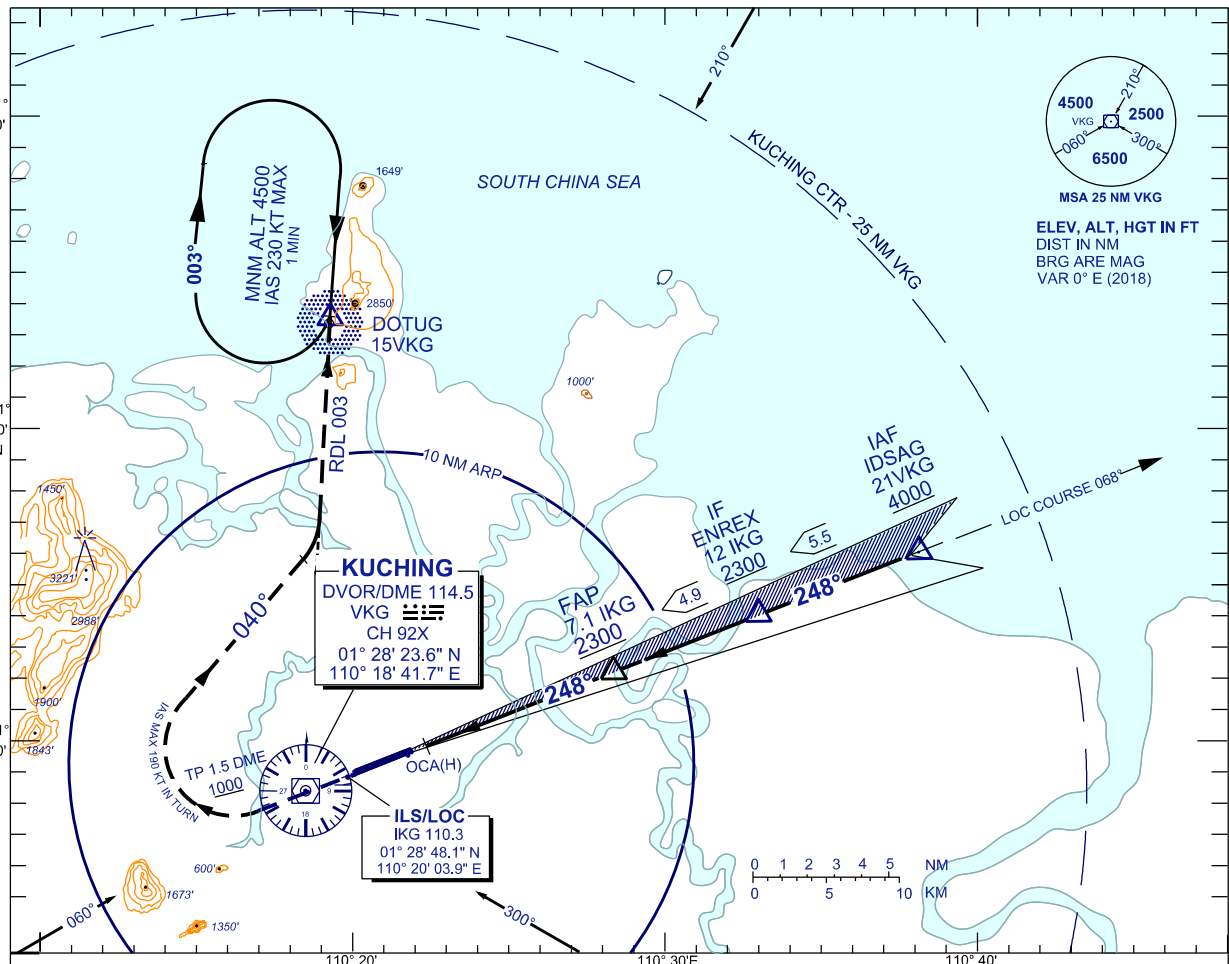
**INSTRUMENT
APPROACH
CHART - ICAO**

AERODROME ELEV 88 FT
 HEIGHTS RELATED TO
 THR RWY 25 - ELEV 42 FT
 ILS REF DATUM 54 FT

TWR	118.1 (P)	SMC	121.9
APP	120.2 (P)	ATIS	128.4
	123.85 (S)	FIS	134.75
ACC	134.5(P)		
	125.35 (S)		

KUCHING/KUCHING (H)
RWY 25

ILS Z/ LOC Z
 (FROM STAR)

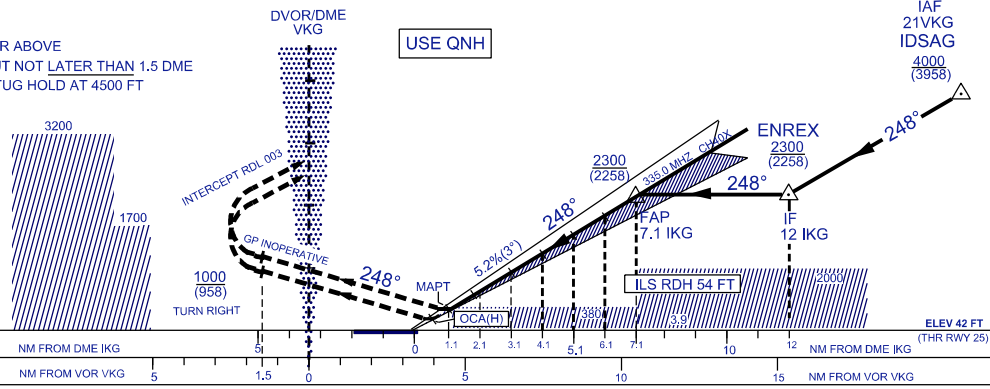


DIST BY DME (NM)	7.1	6.1	5.1	4.1	3.1	2.1	1.1
ALT 3° APCH PATH (FT)	2300 (2258)	1982 (1940)	1664 (1622)	1346 (1304)	1028 (986)	710 (668)	443 (401)

TRANSITION ALT 11,000

MISSED APPROACH

CLIMB ON 248° TO 1000 FT OR ABOVE
 TURN RIGHT AFTER VKG, BUT NOT LATER THAN 1.5 DME
 INTERCEPT RDL 003 TO DOTUG HOLD AT 4500 FT
 OR AS DIRECTED BY ATC



OCA (H) FT		A	B	C	D
STRAIGHT-IN APPROACH	CAT. 1	243 (201)	243 (201)	245 (203)	256 (214)
	GP INOP.	443 (401) / 1.1 IKG			
CIRCLING		750 (662)	750 (662)	1200 (1112)	1200 (1112)

GROUND SPEED(KT)		70	90	120	150	180	210
FAP - MAPT = 6.0NM	MIN : SEC	5:08	4:00	3:00	2:24	2:00	1:43
	RATE OF DESCENT (3°)	FT./ MIN	354	455	607	759	911

CHANGES : CHANGE AERODROME ELEVATION TO 88 FT AND THR RWY 25 ELEVATION TO 42 FT.