

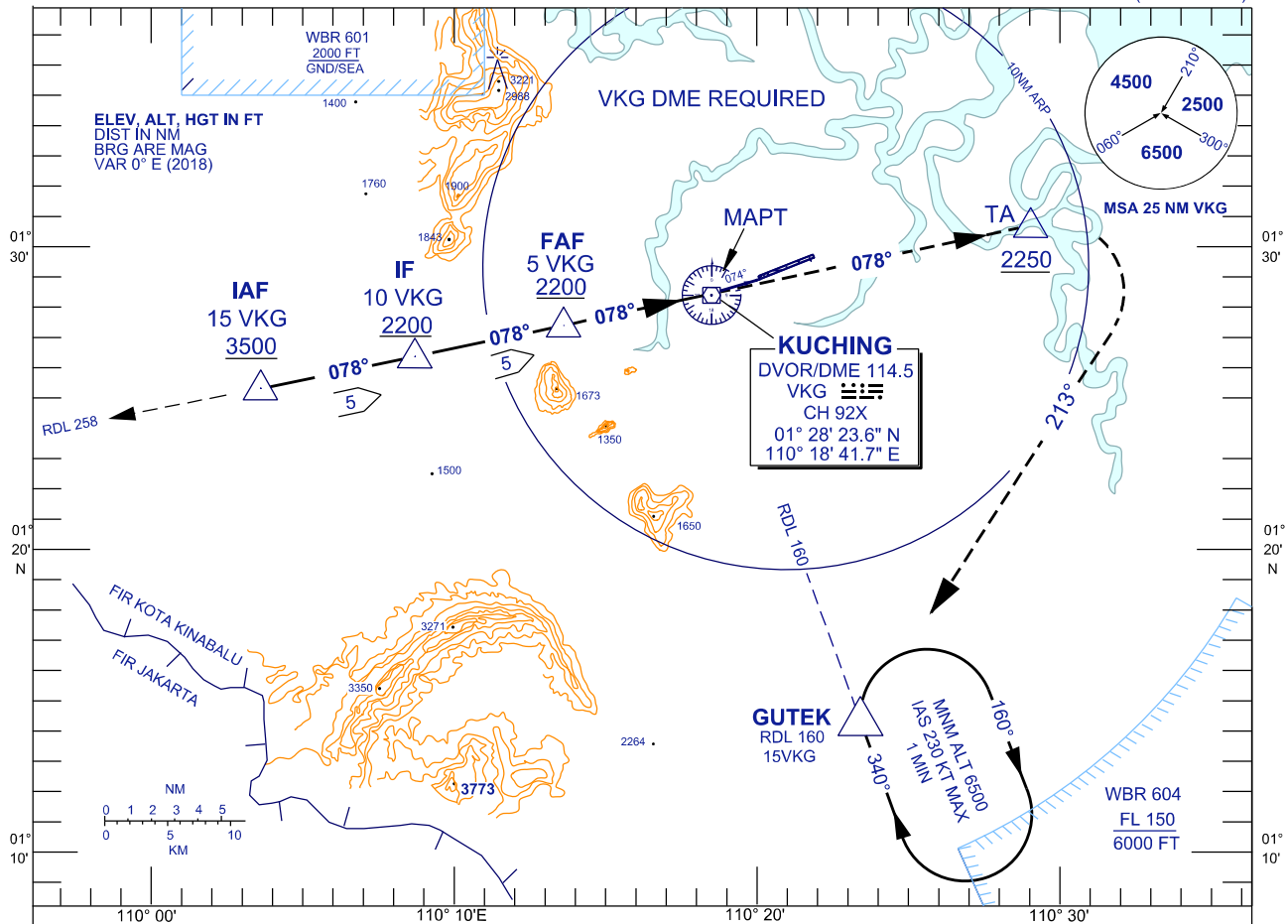
INSTRUMENT APPROACH CHART - ICAO

AERODROME ELEV 88 FT
HEIGHTS RELATED TO
THR RWY 07 - ELEV 88 FT

TWR	118.1 (P)	SMC	121.9
APP	120.2 (P)	ATIS	128.4
	123.85 (S)	FIS	134.75
ACC	134.5(P)		
	125.35 (S)		

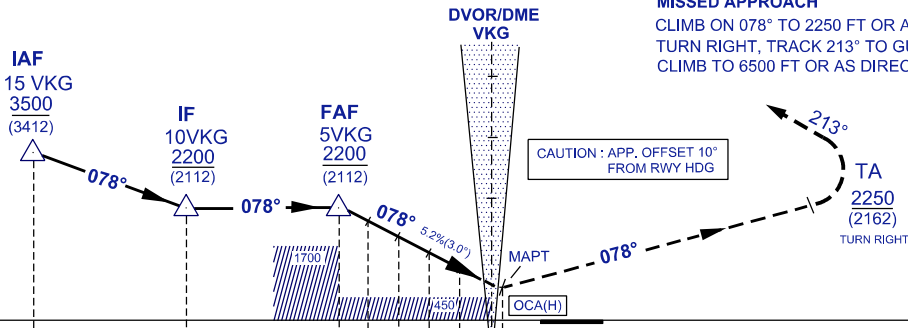
KUCHING/KUCHING (WBGG)
RWY 07

VOR Z
(FROM STAR)



DISTANCE BY DME (NM)	FAF/5.0	4.0	3.0	2.0	1.0	VKG	MAPT-0.3
ALT 3° APCH PATH (FT)	2200(2112)	1882(1794)	1564(1476)	1246(1158)	928(840)	610(522)	524(436)

MISSED APPROACH
CLIMB ON 078° TO 2250 FT OR ABOVE
TURN RIGHT, TRACK 213° TO GUTEK HOLD
CLIMB TO 6500 FT OR AS DIRECTED BY ATC



OCA (H) FT	NM FROM VOR VKG			
	A	B	C	D
STRAIGHT-IN APPROACH	524 (436)			
CIRCLING	750(662)	750 (662)	1200(1112)	1200(1112)

GROUND SPEED(KT)		70	90	120	150	180
FAF - MAPT = 5.3NM	MIN : SEC	5:39	4:24	2:39	2:38	2:12
RATE OF DESCENT (3°)	FT./ MIN	406	479	639	799	959