

# STANDARD ARRIVAL CHART INSTRUMENT (STAR) - ICAO

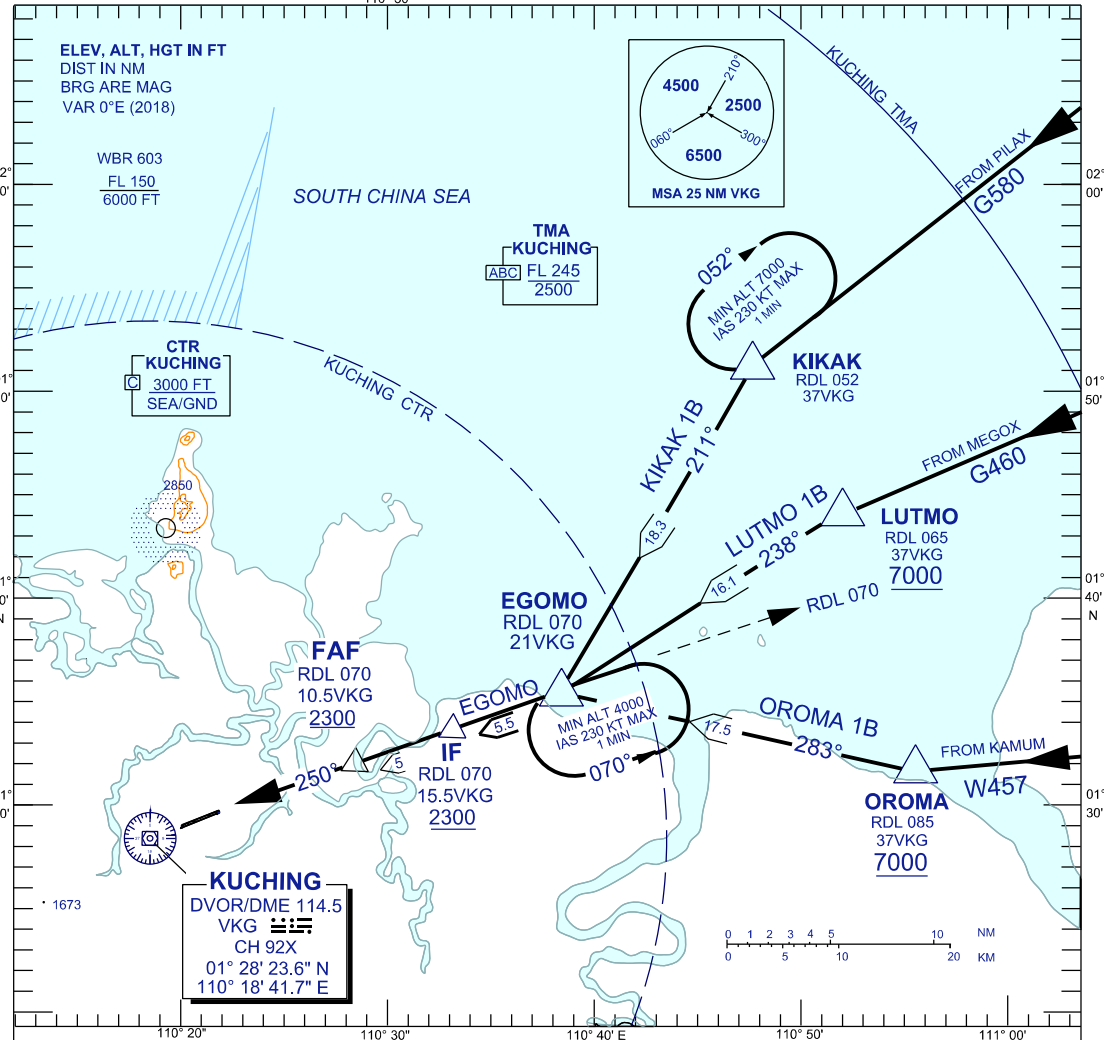
**KUCHING/KUCHING (WBGG)  
RWY 25 (VOR/DME)**

TRANSITION ALTITUDE  
11,000 FT

|     |            |      |        |
|-----|------------|------|--------|
| TWR | 118.1 (P)  | SMC  | 121.9  |
| APP | 120.2 (P)  | ATIS | 128.4  |
| ACC | 134.5 (P)  | FIS  | 134.75 |
|     | 125.35 (S) |      |        |

BANK ANGLE : 25° OR 3°/SEC

EGOMO ARRIVAL



## TRANSITIONS

- KIKAK ONE BRAVO :** FROM KIKAK TRACK 211° TO EGOMO, THEN TRACK TO IF
- LUTMO ONE BRAVO :** FROM LUTMO TRACK 238° TO EGOMO, THEN TRACK TO IF
- OROMA ONE BRAVO :** FROM OROMA TRACK 283° TO EGOMO, THEN TRACK TO IF

## EGOMO ARRIVAL

- INTERCEPT LOC RWY 25 OR INTERCEPT RDL 070 VKG

## VERTICAL RESTRICTIONS :

ADHERE TO VERTICAL RESTRICTIONS eg. 7000 = NOT BELOW 7000 FT ON DESCENT UNLESS SPECIFICALLY CANCELLED BY ATC.

## COMMUNICATIONS FAILURE :

- \* SQUAWK 7600
- \* IF UNDER PILOT NAVIGATION, CONTINUE ON STAR AND LAND
- \* IF UNDER RADAR VECTORING, MAINTAIN VECTOR FOR 1 MINUTE, IF BELOW MSA, CLIMB TO MSA, THEN TRACK TO INTERCEPT CLEARED OR PREVIOUSLY ASSIGNED STAR AND LAND

**CHANGES :** REMOVE TAS < 250 KT FROM FREQUENCY BOX.