

# STANDARD ARRIVAL CHART INSTRUMENT (STAR) - ICAO

TRANSITION ALTITUDE  
11,000 FT

TWR	118.1 (P)	SMC	121.9
APP	120.2 (P)	ATIS	128.4
	123.85 (S)	FIS	134.75
ACC	134.5 (P)		
	125.35 (S)		

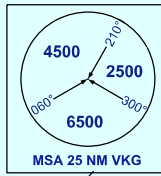
# KUCHING (WBGG) RWY 07

DOTUG 1C ARRIVAL  
GUTEK 1C ARRIVAL

BANK ANGLE : 25° OR 3°/SEC

110° 10'

ELEV, ALT, HGT IN FT  
DIST IN NM  
BRG ARE MAG  
VAR 0° E (2018)



WBR 603  
FL 150  
6000 FT



**25**

**DOTUG**  
RDL 003  
15VKG

SOUTH CHINA SEA

KUCHING CTR

KIKAK 1H 232°

25VKG

LUTMO 1G 245°

281°

25VKG

265°

231°

25VKG

14.8VKG

11.9VKG

18.2NM

288°

160°

2454

2700

15VKG

15VKG

15VKG

15VKG

15VKG

15VKG

15VKG

15VKG

15VKG

15VKG

15VKG

15VKG

15VKG

15VKG

15VKG

15VKG

15VKG

15VKG

15VKG

15VKG

15VKG

15VKG

15VKG

15VKG

15VKG

15VKG