

**STANDARD DEPARTMENT CHART
INSTRUMENT (SID) - ICAO**

**KUCHING (WBGG)
RWY 25**

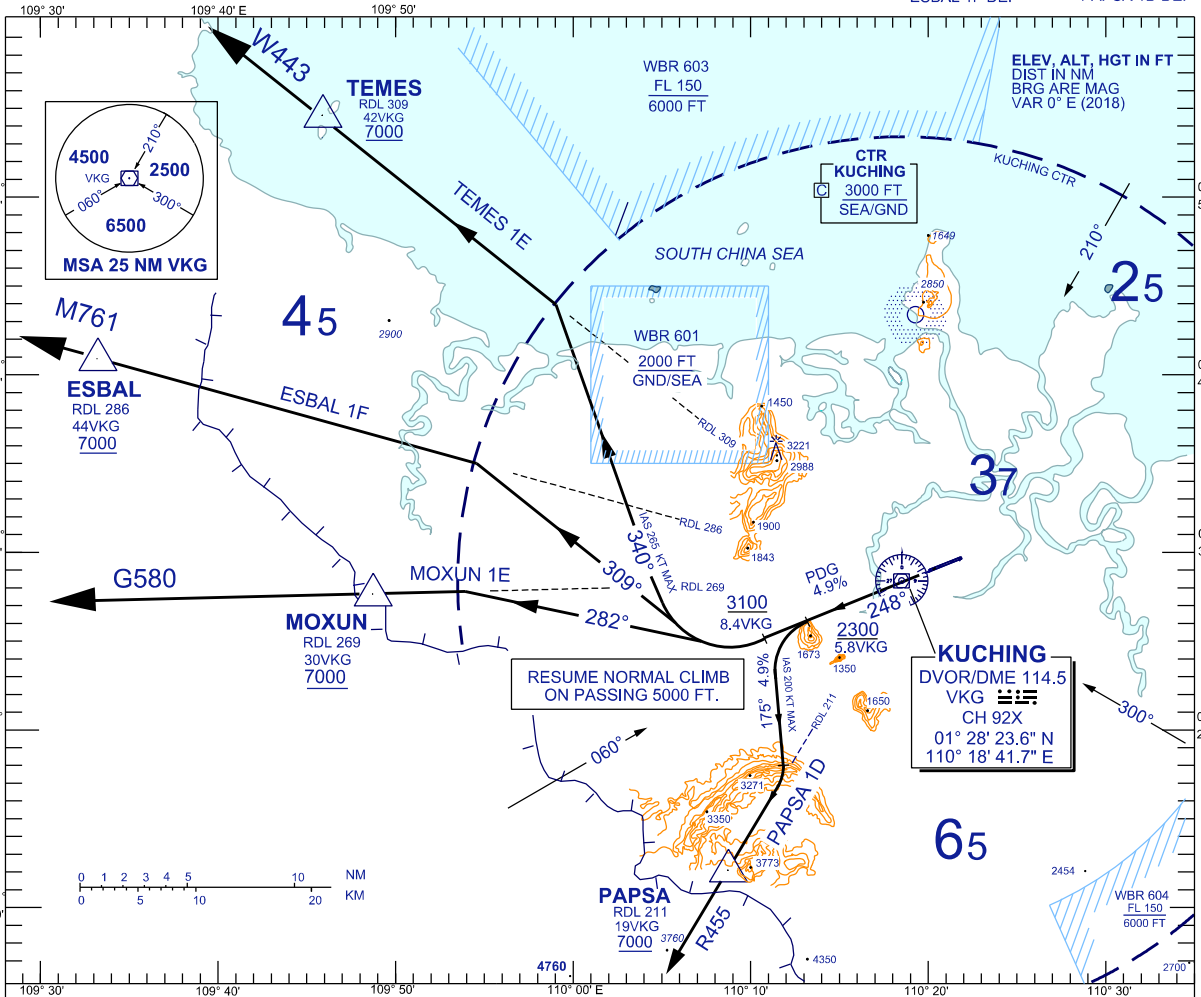
BANK ANGLE : 15° ACHEIVED

TRANSITION ALTITUDE
11,000 FT

TWR 118.1 (P) SMC 121.9
121.7 (S) ATIS 128.4
APP 120.2 (P) FIS 134.75
123.85 (S)
ACC 134.5 (P)
125.35 (S)

TEMES 1E DEP
ESBAL 1F DEP

MOXUN 1E DEP
PAPSA 1D DEP



**TEMES ONE ECHO DEPARTURE
ESBAL ONE FOXTROT DEPARTURE
MOXUN ONE ECHO DEPARTURE**

CLIMB AT 4.9% ON TRACK 248°
AT/ABOVE 3100 FEET, TURN RIGHT,

FOR TEMES ONE ECHO
TRACK 340° TO INTERCEPT RDL 309 TO TEMES

FOR ESBAL ONE FOXTROT
TRACK 309° TO INTERCEPT RDL 286 TO ESBAL

FOR MOXUN ONE ECHO
TRACK 282° TO INTERCEPT RDL 269 TO MOXUN

PAPSA ONE DELTA DEPARTURE

CLIMB AT 4.9% ON TRACK 248°
AT/ABOVE 2300 FEET, TURN LEFT,

FOR PAPSA ONE DELTA
TRACK 175° TO INTERCEPT RDL 211 TO PAPSA

SPEED(IAS)	120KT	140KT	160KT	180KT	200KT	230KT	265KT
4.9% ROC (FT/MIN)	599	698	799	899	997	1147	1324

VERTICAL RESTRICTIONS :

ADHERE TO VERTICAL RESTRICTIONS eg . 7000 = NOT BELOW 7000 FT ON CLIMB UNLESS SPECIFICALLY CANCELED BY ATC

COMMUNICATION FAILURE :

- SQUAWK 7600
- IF UNDER PILOT NAVIGATION, MAINTAIN LAST ASSIGNED LEVEL FOR 3 MINUTES, IF NO ONWARD CLEARANCE IS RECEIVED, SUBSEQUENTLY CLIMB TO COMPLY WITH SID.
- IF UNDER RADAR VECTORED : MAINTAIN VECTOR FOR 2 MINUTES, IF BELOW MSA, CLIMB TO MSA, THEN TRACK TO INTERCEPT CLEARED OR PREVIOUSLY ASSIGNED SID TO DESTINATION

CHANGES : CHANGE IGEVU TO ESBAL