

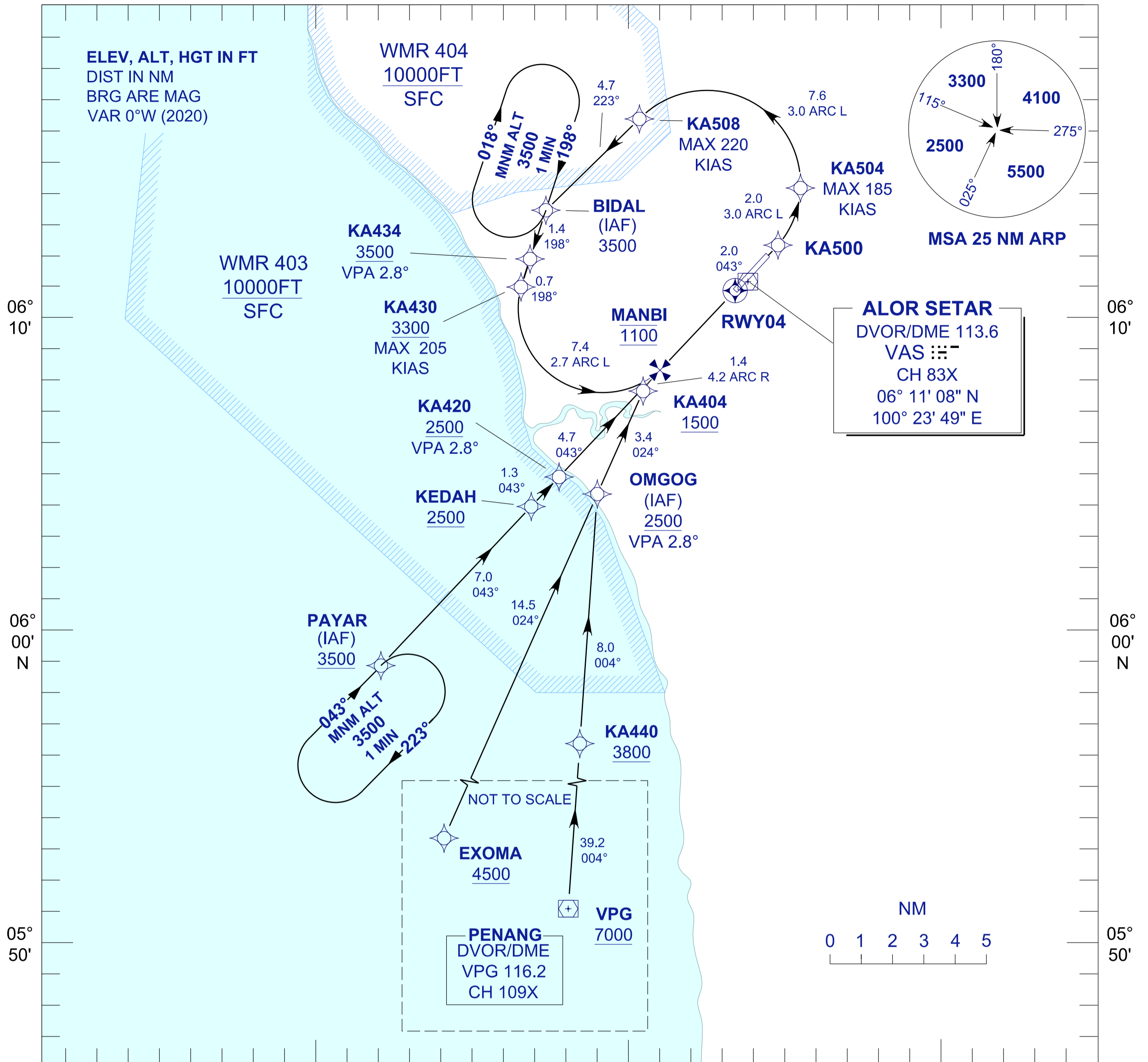
**INSTRUMENT  
APPROACH  
CHART - ICAO**

**AERODROME ELEV 14 FT**  
HEIGHTS RELATED TO  
THR RWY 04 - ELEV 12 FT

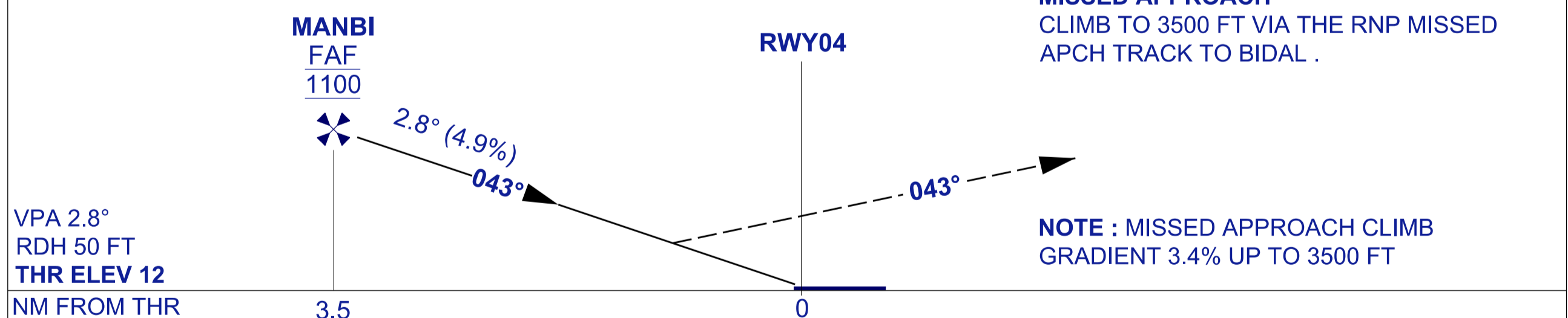
APP/TWR 122.3, 258.2, 121.5  
TRAINING 129.1  
SMC 121.6  
ATIS 128.65

**ALOR SETAR/  
SULTAN ABDUL HALIM (WMKA)**

RNP Z RWY 04 (AR)



TRANSITION LEVEL FL 130  
TRANSITION ALT 11 000



OCA/H	
ACFT CAT. C	D
RNP 0.3 430 (418) / 2.3 KM	

GROUND SPEED - KT	70	90	100	120	140	160
RATE OF DESCENT (2.8°) ( FEET/MIN )	347	446	495	594	693	792

DISTANCE TO THRESHOLD (NM)	3.5	3	2	1
ALTITUDE (FEET)	1100	960	670	370

- 1. AUTHORIZATION REQUIRED
- 2. GNSS REQUIRED
- 3. RF REQUIRED
- 4. APPROACH NOT AUTHORIZED WHEN AIRPORT TEMPERATURE BELOW 19°C OR ABOVE 40°C
- 5. WMKA ALTIMETER SETTING REQUIRED.
- 6. PAPI AND VERTICAL PATH ANGLE NOT COINCIDENT
- 7. PROCEDURE REQUIRES RNP 0.3 FROM IAFS TO KA504
- 8. TOGA TO NAV REQUIRED
- 9. CLIMB GRADIENT OF 3.4% TO 3500 FT REQUIRED TO REACH BIDAL

**CHANGES : AERODROME ELEVATION**