

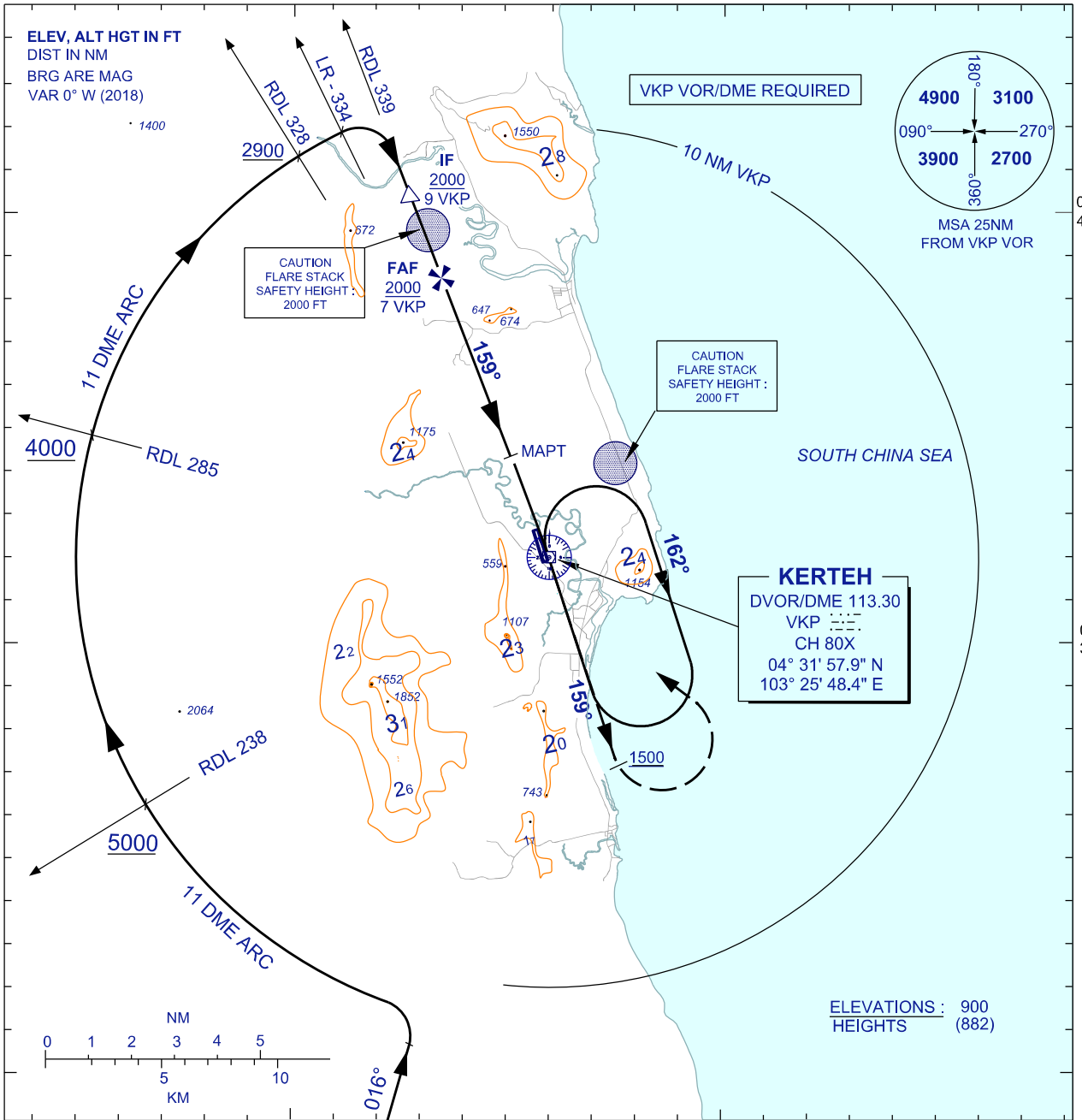
INSTRUMENT APPROACH CHART - ICAO

AERODROME ELEV 18 FT
HEIGHTS RELATED TO
THR RWY 34 - ELEV 18 FT

TWR 123.3
258.5
SMC 121.8
ATIS 128.25

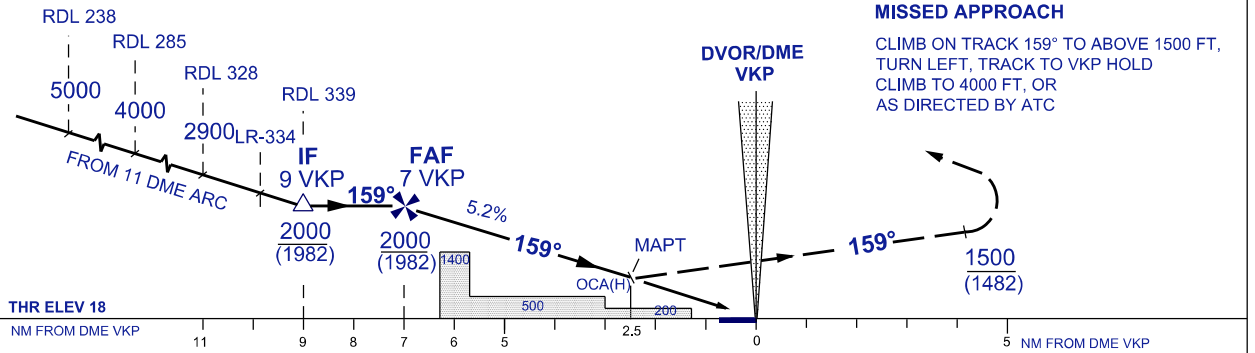
KERTEH/KERTEH (WMKE)
RWY 16

VOR Z



DIST BY DME (VKP)	7	6	5	4	3	2.5
ALT 3° APCH PATH (FT)	2000 (1982)	1682 (1664)	1364 (1346)	1046 (1028)	728 (710)	600 (582)

TRANSITION ALT 11000



MISSED APPROACH
CLIMB ON TRACK 159° TO ABOVE 1500 FT,
TURN LEFT, TRACK TO VKP HOLD
CLIMB TO 4000 FT, OR
AS DIRECTED BY ATC

OCA (H) FT		A	B
STRAIGHT-IN APPROACH	VOR/DME	600 (582)/2.5 DME VKP	
CIRCLING/MNM VIS (NM)		NOT PERMITTED	

GROUND SPEED (KT)		70	90	110	140	
FAF - MAPT = 4.5 NM		MIN : SEC	3:45	3:00	2:28	1:56
RATE OF DESCENT (3°)		FT/ MIN	387	484	591	752