

**STANDARD DEPARTURE CHART  
INSTRUMENT (SID) - ICAO**

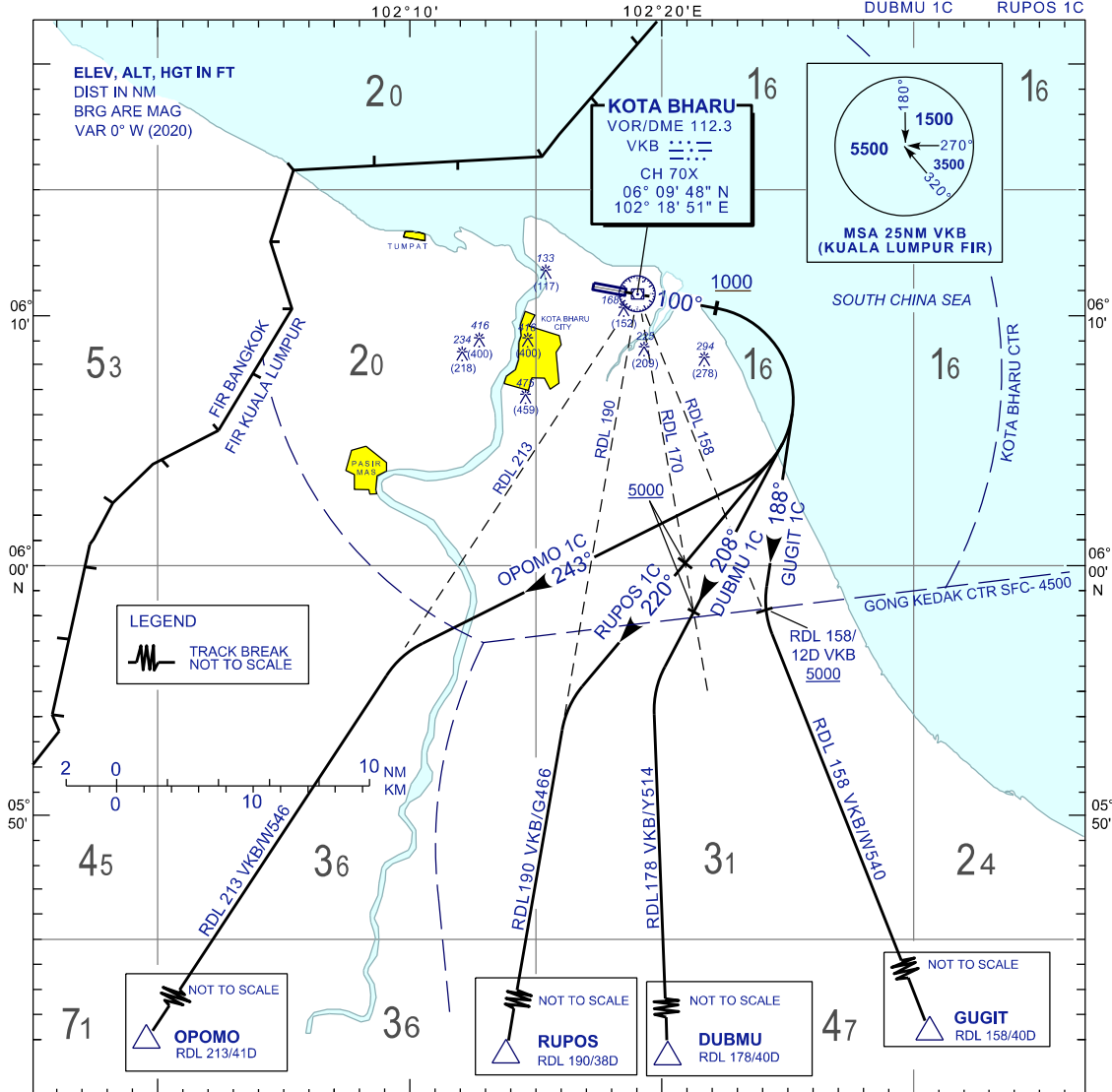
**KOTA BHARU/  
SULTAN ISMAIL PETRA (WMKC)  
RWY 10**

TRANSITION ALTITUDE  
11000 FT

APP 120.85,130.3  
TWR 122.5  
SMC 121.6  
ATIS 128.85

OPOMO 1C  
DUBMU 1C

GUGIT 1C  
RUPOS 1C



**OPOMO ONE CHARLIE DEPARTURE (OPOMO 1C)**

TRACK HEADING 100° AT 1000FT OR ABOVE  
TURN RIGHT HEADING 243° TO INTERCEPT  
RDL 213 VKB VOR TO OPOMO/ W546  
NOTE\*  
1. PDG 4.4% UNTIL PASSING 5000FT

**GUGIT ONE CHARLIE DEPARTURE (GUGIT 1C)**

TRACK HEADING 100° AT 1000FT OR ABOVE  
TURN RIGHT TRACK 188° TO INTERCEPT  
RDL158 VKB VOR TO GUGIT/ W540  
NOTE\*  
1. PDG 5.7% UNTIL PASSING 5000FT  
2. CROSS 12 DME ON RDL 158 VKB VOR  
5000FT OR ABOVE

**RUPOS ONE CHARLIE DEPARTURE (RUPOS 1C)**

TRACK HEADING 100° AT 1000FT OR ABOVE TURN RIGHT  
TRACK 220° TO INTERCEPT RDL190 VKB VOR TO RUPOS/G466  
NOTE\*  
1. PDG 5.7% UNTIL PASSING 5000FT  
2. CROSS RDL170 VKB VOR 5000FT OR ABOVE

**DUBMU ONE CHARLIE DEPARTURE (DUBMU 1C)**

TRACK HEADING 100° AT 1000FT OR ABOVE TURN RIGHT  
TRACK 208° TO INTERCEPT RDL178 VKB VOR TO DUBMU/Y514  
NOTE\*  
1. PDG 5.7% UNTIL PASSING 5000FT  
2. CROSS RDL170 VKB VOR 5000FT OR ABOVE

**RATE OF CLIMB(FT)**

GND SPEED - KT	120	150	180	210	240	270
GRADIENT	3.3%	401	501	601	702	802
	4.4%	535	668	802	936	1069
	5.7%	692	866	1039	1212	1385

**COMMUNICATION FAILURE :**

- SQUAWK 7600
- IF UNDER PILOT NAVIGATION, MAINTAIN LAST ASSIGNED LEVEL FOR 3 MINUTE, IF NO ONWARD CLEARANCE IS RECEIVED, SUBSEQUENTLY CLIMB TO COMPLY WITH SID.
- IF UNDER RADAR VECTORED, MAINTAIN VECTOR FOR 2 MINUTES
- IF BELOW MSA, CLIMB TO MSA, THEN TRACK TO INTERCEPT CLEARED OR PREVIOUSLY ASSIGNED SID TO DESTINATION.