

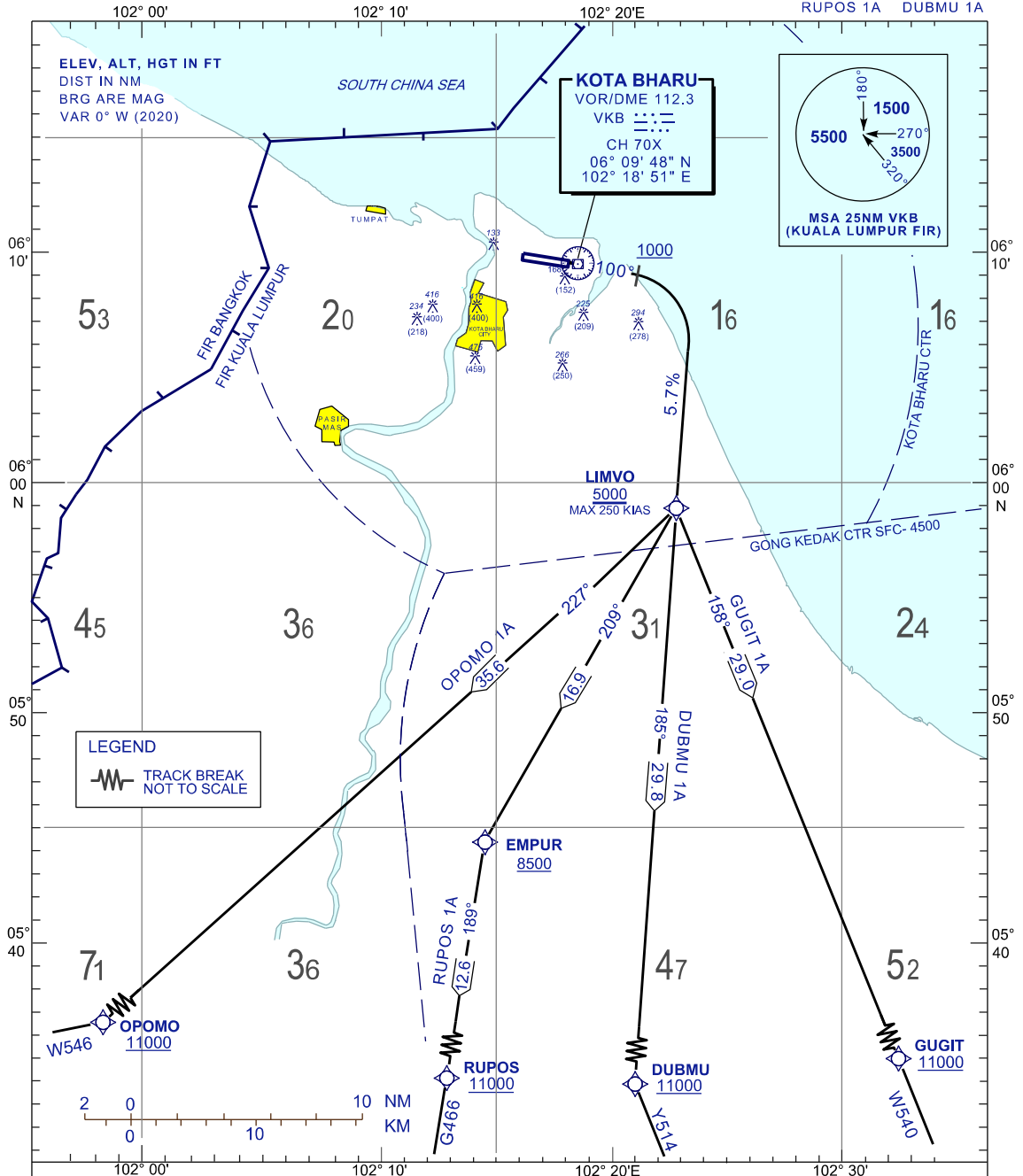
**STANDARD DEPARTURE CHART  
INSTRUMENT (SID) - ICAO**

APP 120.85,130.3  
TWR 122.5  
SMC 121.6  
ATIS 128.85

**KOTA BHARU/  
SULTAN ISMAIL PETRA (WMKC)  
RNAV (GNSS) RWY 10**

TRANSITION ALTITUDE  
11 000 FT

GUGIT 1A OPOMO 1A  
RUPOS 1A DUBMU 1A



RATE OF CLIMB(FT)						
GND SPEED - KT	120	150	180	210	240	270
GRADIENT	3.3%	401	501	602	702	802
	5.7%	692	866	1039	1212	1385

**COMMUNICATION FAILURE :**

- SQUAWK 7600
- IF UNDER PILOT NAVIGATION, MAINTAIN LAST ASSIGNED LEVEL FOR 3 MINUTE, IF NO ONWARD CLEARANCE IS RECEIVED, SUBSEQUENTLY CLIMB TO COMPLY WITH SID.
- IF UNDER RADAR VECTORED, MAINTAIN VECTOR FOR 2 MINUTES
- IF BELOW MSA, CLIMB TO MSA, THEN TRACK TO INTERCEPT CLEARED OR PREVIOUSLY ASSIGNED SID TO DESTINATION.

**CHANGES: MAGNETIC VARIATION**