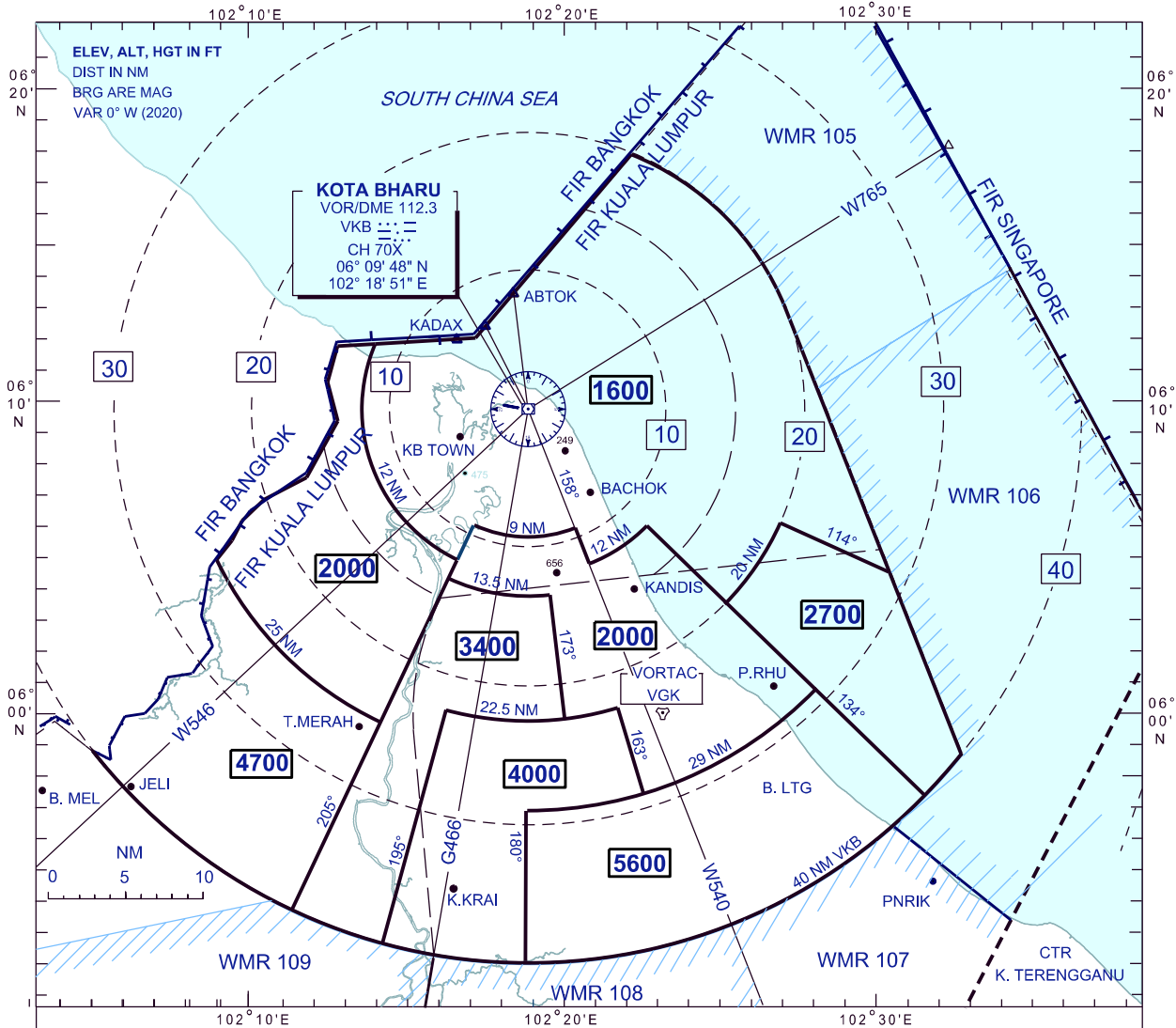


**ATC SURVEILLANCE MINIMUM  
ALTITUDE CHART - ICAO**

AERODROME ELEV 16 FT  
TRANSITION ALT 11 000 FT

APP 120.85 (P)  
130.3 (S)

**KOTA BHARU/  
SULTAN ISMAIL PETRA (WMKC)**



**LOSS OF RADIO COMMUNICATION PROCEDURES :**

1. SET TRANSPONDER OF 7600
2. (A) IN VMC  
CONTINUE APPROACH VISUALLY FOR THE  
RUNWAY AND LAND OR
- (B) IN IMC  
MAINTAIN LAST ASSIGNED ALTITUDE ;  
OR CLIMB TO 5500FT IN THE LAST ASSIGNED  
ALTITUDE IS BELOW  
5500FT AND TRACK DIRECT FOR VKB

**NOTES :**

- \* ATC SURVEILLANCE MINIMUM ALTITUDE  
COMPRISES AN AREA 40 NM  
RADIUS VKB VOR/DME.
- \* ALL BEARINGS / DISTANCES ARE REFERENCED  
TO VKB VOR/DME.
- \* LATERAL / VERTICAL SEPARATION FROM  
TERRAIN - 5NM / 1000FT

CHANGES : MAGNETIC VARIATION