

# INSTRUMENT APPROACH CHART - ICAO

AERODROME ELEV 23 FT  
 HEIGHTS RELATED TO DISP  
 THR RWY 03 - ELEV 16 FT

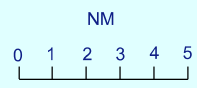
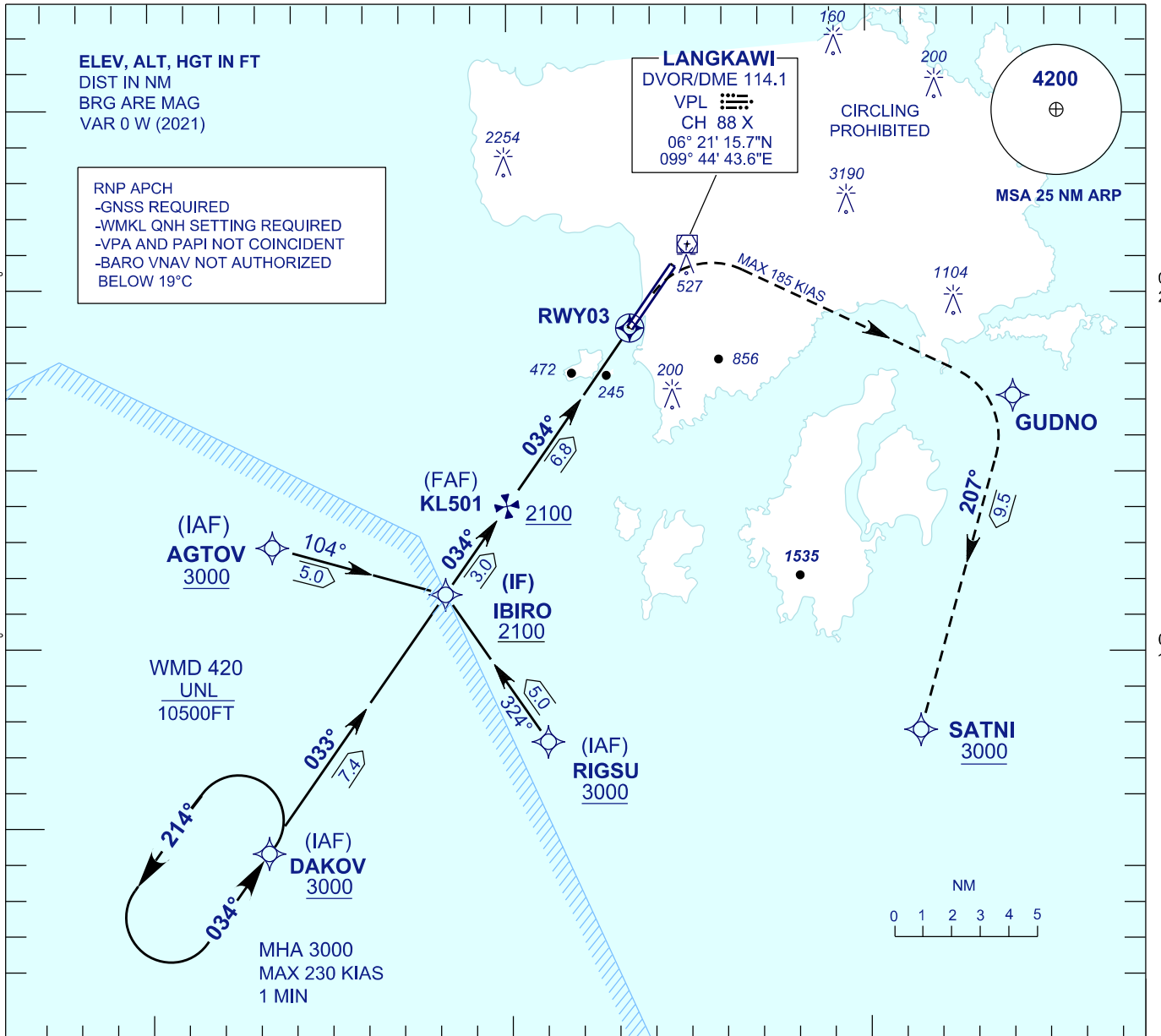
APP 119.4, 257.8  
 TWR 118.5  
 SMC 121.8  
 ATIS 128.2

# LANGKAWI/LANGKAWI INTERNATIONAL AIRPORT (WMKL)

RNP Y RWY 03

ELEV, ALT, HGT IN FT  
 DIST IN NM  
 BRG ARE MAG  
 VAR 0 W (2021)

RNP APCH  
 -GNSS REQUIRED  
 -WMKL QNH SETTING REQUIRED  
 -VPA AND PAPI NOT COINCIDENT  
 -BARO VNAV NOT AUTHORIZED BELOW 19°C



TRANSITION LEVEL FL 130  
 TRANSITION ALT 11,000

DAKOV RIGSU AGTOV (IAF)      IBIRO (IF)      KL501 (FAF)      RWY03 (LNAV MAPT)

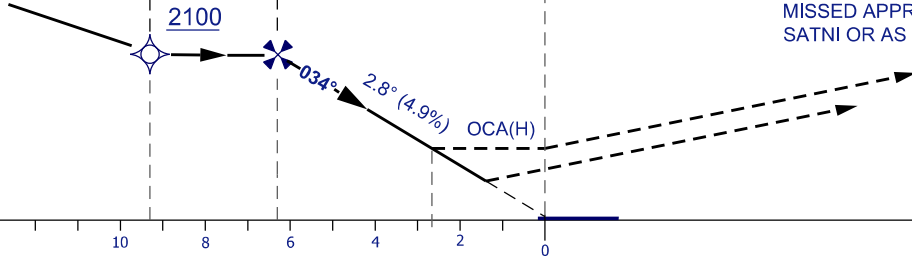
**MISSED APPROACH**  
 CLIMB TO 3000 FT VIA THE RNP MISSED APPROACH TRACK TO SATNI OR AS DIRECTED BY ATC

RDH 50 FT

VPA 2.8°

THR ELEV 16

NM FROM THR



### OCA (H) FT

ACFT CATEGORY	A	B	C	D		
LNAV (STRAIGHT-IN)	880 (864) / 2.8NM TO THR					
LNAV/VNAV	865 (849)					
DISTANCE TO THR	6.6	6	5	4	3	2.8
ALTITUDE (FT)	2100 (2084)	1930 (1914)	1610 (1594)	1300 (1284)	980 (964)	890 (874)

CHANGES : AERODROME ELEVATION