

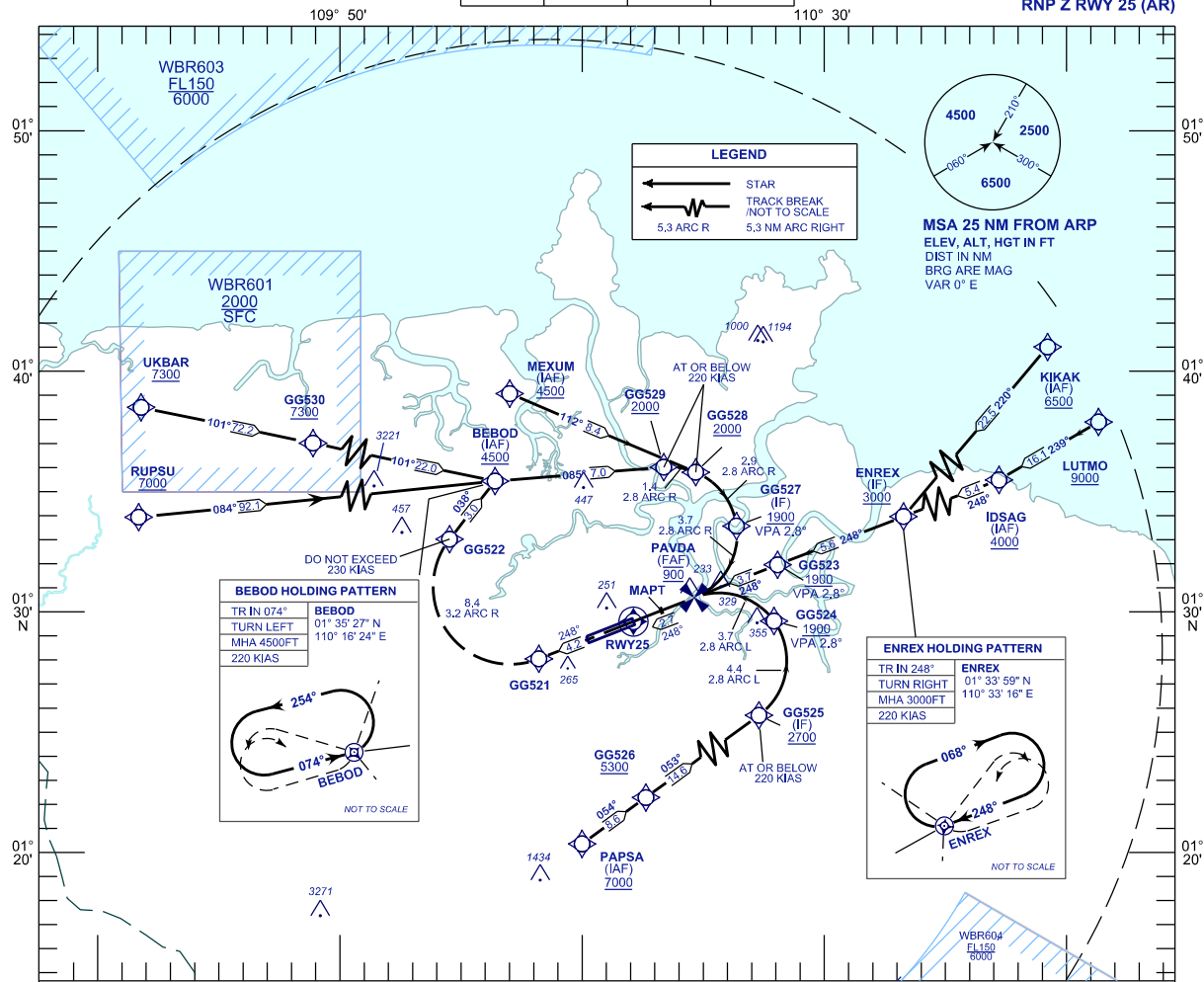
**INSTRUMENT
APPROACH
CHART - ICAO**

AERODROME ELEV 88 FT
HEIGHT RELATED TO
THR RWY 25 - ELEV 42 FT

APP	TWR	SMC	ATIS
120.2	118.1	121.9	128.4
123.85	121.7		

**KUCHING/KUCHING
INTERNATIONAL AIRPORT (WBGG)**

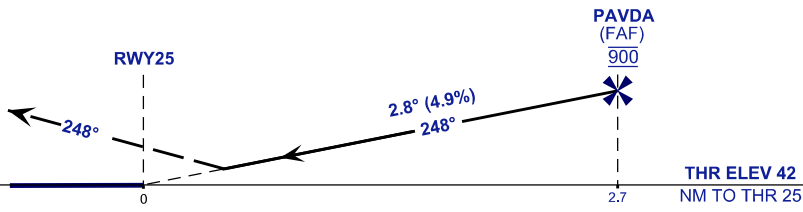
RNP Z RWY 25 (AR)



VPA 2.8°
RDH 54FT

MISSED APPROACH
CLIMB TO 4500FT VIA THE RNP MISSED APPROACH
TRACK TO BEBOD OR AS DIRECTED BY ATC

TRANSITION LEVEL FL130
TRANSITION ALT 11 000



STRAIGHT - IN APPROACH	OCA (OCH)		GROUND SPEED - KT	70	90	100	120	140	160
CATEGORY OF AIRCRAFT	C	D	RATE OF DESCENT (2.8°) (FEET/MIN)	347	446	495	594	693	792
RNP 0.3	465 (423)		DISTANCE TO THRESHOLD (NM)	2.7		2	1		
CIRCLING AND ALTERNATE N/A			ALTITUDE (FEET)	900		670	370		

- AUTHORIZATION REQUIRED**
- GNSS REQUIRED**
- RF REQUIRED**
- APPROACH NOT AUTHORIZED WHEN AIRPORT TEMPERATURE BELOW 19°C OR ABOVE 40°C.
- WBGG ALTIMETER SETTING REQUIRED.
- PAPI AND VERTICAL PATH ANGLE NOT COINCIDENT.
- CLIMB GRADIENT 4.2% REQUIRED TO REACH BEBOD AT 4500 FT.
- RNP 1.0 REQUIRED TO BEBOD, ENREX AND GG526.
- RNP 0.3 REQUIRED FROM BEBOD, ENREX, GG526 AND MEXUM TO RWY.

CHANGES: MIN ALTITUDE FOR GG527.