

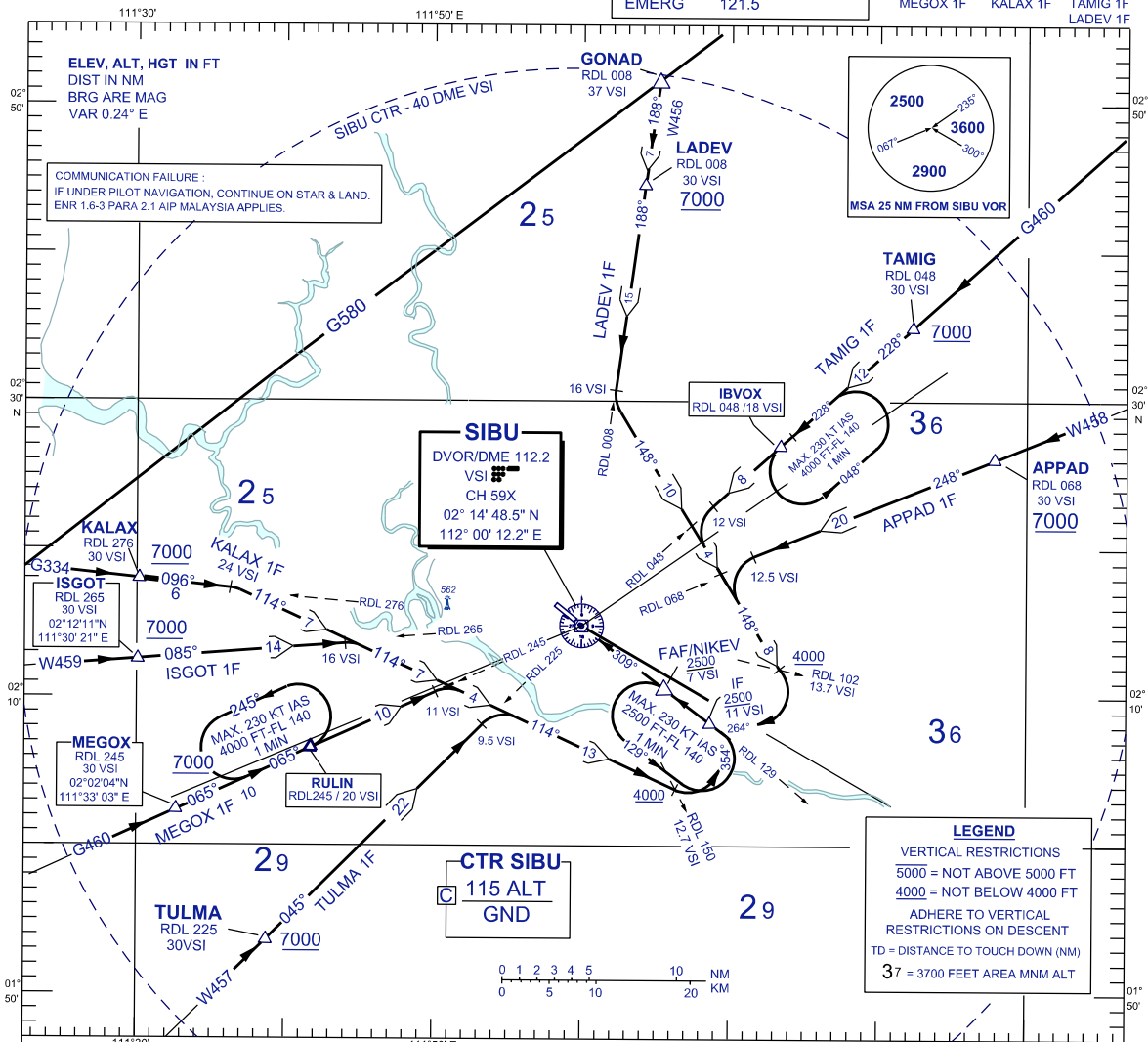
STANDARD ARRIVAL CHART INSTRUMENT (STAR) - ICAO

TRANSITION ALTITUDE
11 000 FT

APP 122.6(P), 124.4 (S)
TWR 123.2
SMC 121.9
ATIS 127.65
EMERG 121.5

**SIBU/SIBU (WBGS)
RWY 31
(VOR/DME)**

TULMA 1F ISGOT 1F APPAD 1F
MEGOX 1F KALAX 1F TAMIG 1F
LADEV 1F



TULMA ONE FOXTROT ARRIVAL
MEGOX ONE FOXTROT ARRIVAL
ISGOT ONE FOXTROT ARRIVAL
KALAX ONE FOXTROT ARRIVAL

- TULMA ONE FOXTROT ARRIVAL**
- FROM TULMA TRACK ON RDL 225 VSI VOR INBOUND
 - AT 9.5 DME VSI TURN RIGHT TRACK 114°
 - ON CROSSING RDL 150, TURN LEFT, TRACK 354°
 - TO INTERCEPT RDL 129 FOR VOR/DME APPROACH

- MEGOX ONE FOXTROT ARRIVAL / FROM RULIN HOLD**
- FROM MEGOX OR RULIN TRACK ON RDL 245 VSI VOR INBOUND
 - AT 11 DME VSI TURN RIGHT TRACK 114°
 - ON CROSSING RDL 150, TURN LEFT, TRACK 354°
 - TO INTERCEPT RDL 129 FOR VOR/DME APPROACH

- ISGOT ONE FOXTROT ARRIVAL**
- FROM ISGOT TRACK ON RDL 265 VSI VOR INBOUND
 - AT 16 DME VSI TURN RIGHT TRACK 114°
 - ON CROSSING RDL 150, TURN LEFT, TRACK 354°
 - TO INTERCEPT RDL 129 FOR VOR/DME APPROACH

- KALAX ONE FOXTROT ARRIVAL**
- FROM KALAX TRACK ON RDL 276 VSI VOR INBOUND
 - AT 24 DME VSI TURN RIGHT TRACK 114°
 - ON CROSSING RDL 150, TURN LEFT, TRACK 354°
 - TO INTERCEPT RDL 129 FOR VOR/DME APPROACH

**STAR RWY 31
- VOR/DME**

APPAD ONE FOXTROT ARRIVAL
TAMIG ONE FOXTROT ARRIVAL
LADEV ONE FOXTROT ARRIVAL

- APPAD ONE FOXTROT ARRIVAL**
- FROM APPAD TRACK ON RDL 068° VSI VOR INBOUND
 - AT 12.5 DME VSI TURN LEFT TRACK 148°
 - ON CROSSING RDL 102, TURN RIGHT, TRACK 264°
 - TO INTERCEPT RDL 129 FOR VOR/DME APPROACH

- TAMIG ONE FOXTROT ARRIVAL / FROM IBOX HOLD**
- FROM TAMIG OR IBOX TRACK ON RDL 048° VSI VOR INBOUND
 - AT 12 DME VSI TURN LEFT TRACK 148°
 - ON CROSSING RDL 102, TURN RIGHT, TRACK 264°
 - TO INTERCEPT RDL 129 FOR VOR/DME APPROACH

- LADEV ONE FOXTROT ARRIVAL**
- FROM LADEV TRACK ON RDL 008° VSI VOR INBOUND
 - AT 16 DME VSI TURN LEFT TRACK 148°
 - ON CROSSING RDL 102, TURN RIGHT, TRACK 264°
 - TO INTERCEPT RDL 129 FOR VOR/DME APPROACH