

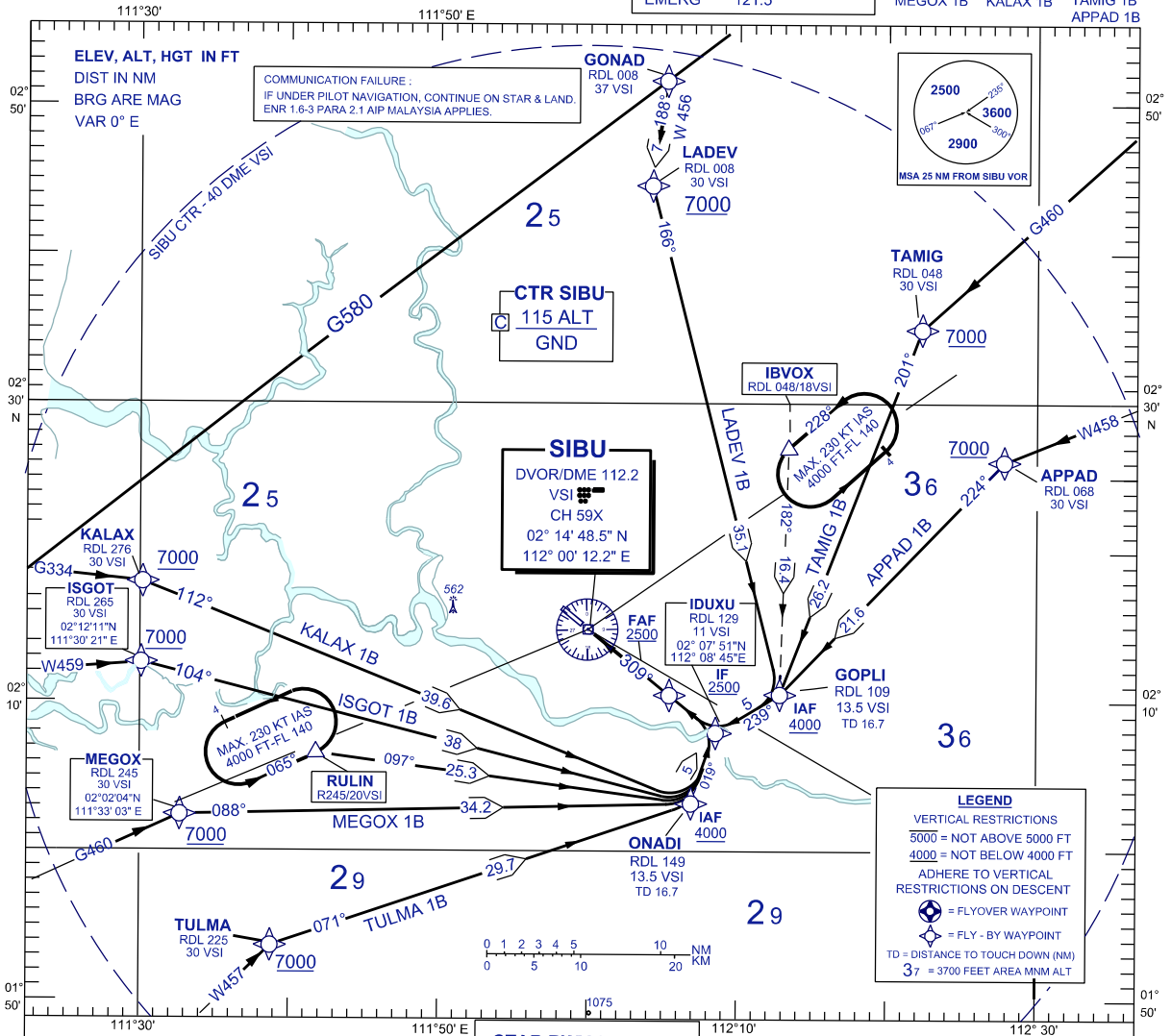
STANDARD ARRIVAL CHART INSTRUMENT (STAR) - ICAO

TRANSITION ALTITUDE
11 000 FT

APP 122.6(P), 124.4 (S)
TWR 123.2
SMC 121.9
ATIS 127.65
EMERG 121.5

SIBU/SIBU (WBG5)
RWY 31
RNAV (VOR/DME)

TULMA 1B ISGOT 1B LADEV 1B
MEGOX 1B KALAX 1B TAMIG 1B
APPAD 1B



STAR RWY 31 - RNAV

TULMA ONE BRAVO ARRIVAL
MEGOX ONE BRAVO ARRIVAL
ISGOT ONE BRAVO ARRIVAL
KALAX ONE BRAVO ARRIVAL

LADEV ONE BRAVO ARRIVAL
TAMIG ONE BRAVO ARRIVAL
APPAD ONE BRAVO ARRIVAL

TULMA ONE BRAVO ARRIVAL

- FROM TULMA TRACK 071° TO ONADI, THEN TO IDUXU
- FROM IDUXU TRACK 309° TO FAF FOR RNAV OR VOR/DME APPROACH

MEGOX ONE BRAVO ARRIVAL

- FROM MEGOX TRACK 088° TO ONADI, THEN TO IDUXU
- FROM IDUXU TRACK 309° TO FAF FOR RNAV OR VOR/DME APPROACH

ISGOT ONE BRAVO ARRIVAL

- FROM ISGOT TRACK 104° TO ONADI, THEN TO IDUXU
- FROM IDUXU TRACK 309° TO FAF FOR RNAV OR VOR/DME APPROACH

KALAX ONE BRAVO ARRIVAL

- FROM KALAX TRACK 112° TO ONADI, THEN TO IDUXU
- FROM IDUXU TRACK 309° TO FAF FOR RNAV OR VOR/DME APPROACH

FROM RULIN HOLD

- *FROM RULIN TRACK 097° TO ONADI, THEN TO IDUXU
- *FROM IDUXU TRACK 309° TO FAF FOR RNAV OR VOR/DME APPROACH

APPAD ONE BRAVO ARRIVAL

- FROM APPAD TRACK 224° TO GOPLI, THEN TO IDUXU
- FROM IDUXU TRACK 309° TO FAF FOR RNAV OR VOR/DME APPROACH

TAMIG ONE BRAVO ARRIVAL

- FROM TAMIG TRACK 201° TO GOPLI, THEN TO IDUXU
- FROM IDUXU TRACK 309° TO FAF FOR RNAV OR VOR/DME APPROACH

LADEV ONE BRAVO ARRIVAL

- FROM LADEV TRACK 166° TO GOPLI, THEN TO IDUXU
- FROM IDUXU TRACK 309° TO FAF FOR RNAV OR VOR/DME APPROACH

FROM IBVOX HOLD

- FROM IBVOX TRACK 182° TO GOPLI, THEN TO IDUXU
- FROM IDUXU TRACK 309° TO FAF FOR RNAV OR VOR/DME APPROACH