

STANDARD ARRIVAL CHART INSTRUMENT (STAR) - ICAO

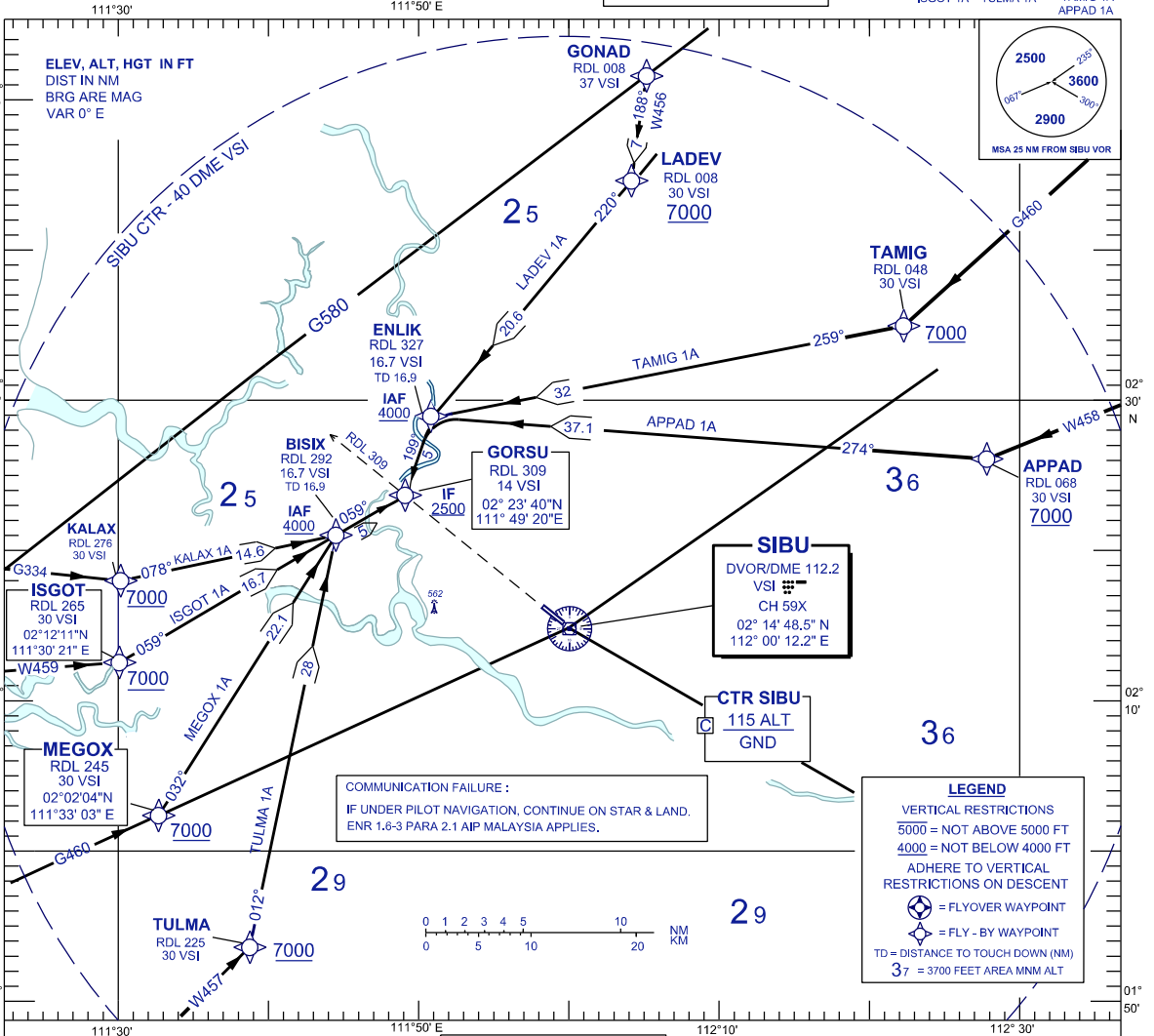
TRANSITION ALTITUDE
11 000 FT

APP	122.6(P), 124.4 (S)
TWR	123.2
SMC	121.9
ATIS	127.65
EMERG	121.5

SIBU/SIBU (WBG5)

RWY 13
RNAV (VOR/DME)

KALAX 1A	MEGOX 1A	LADEV 1A
ISGOT 1A	TULMA 1A	TAMIG 1A
		APPAD 1A



KALAX ONE ALPHA ARRIVAL ISGOT ONE ALPHA ARRIVAL MEGOX ONE ALPHA ARRIVAL TULMA ONE ALPHA ARRIVAL

KALAX ONE ALPHA ARRIVAL

- FROM KALAX TRACK 078° TO BISIX, THEN TO GORSU
- FROM GORSU MAKE STRAIGHT-IN ILS OR LOCALIZER/DME OR VOR/DME APPROACH

ISGOT ONE ALPHA ARRIVAL

- FROM ISGOT TRACK 059° TO BISIX, THEN TO GORSU
- FROM GORSU MAKE STRAIGHT-IN ILS OR LOCALIZER/DME OR VOR/DME APPROACH

MEGOX ONE ALPHA ARRIVAL

- FROM MEGOX TRACK 032° TO BISIX, THEN TO GORSU
- FROM GORSU MAKE STRAIGHT-IN ILS OR LOCALIZER/DME OR VOR/DME APPROACH

TULMA ONE ALPHA ARRIVAL

- FROM TULMA TRACK 012° TO BISIX, THEN TO GORSU
- FROM GORSU MAKE STRAIGHT-IN ILS OR LOCALIZER/DME OR VOR/DME APPROACH

STAR RWY 13 - RNAV

LADEV ONE ALPHA ARRIVAL TAMIG ONE ALPHA ARRIVAL APPAD ONE ALPHA ARRIVAL

LADEV ONE ALPHA ARRIVAL

- FROM LADEV TRACK 220° TO ENLIK, THEN TO GORSU
- FROM GORSU MAKE STRAIGHT-IN ILS OR LOCALIZER/DME OR VOR/DME APPROACH

TAMIG ONE ALPHA ARRIVAL

- FROM TAMIG TRACK 259° TO ENLIK, THEN TO GORSU
- FROM GORSU MAKE STRAIGHT-IN ILS OR LOCALIZER/DME OR VOR/DME APPROACH

APPAD ONE ALPHA ARRIVAL

- FROM APPAD TRACK 274° TO ENLIK, THEN TO GORSU
- FROM GORSU MAKE STRAIGHT-IN ILS OR LOCALIZER/DME OR VOR/DME APPROACH