

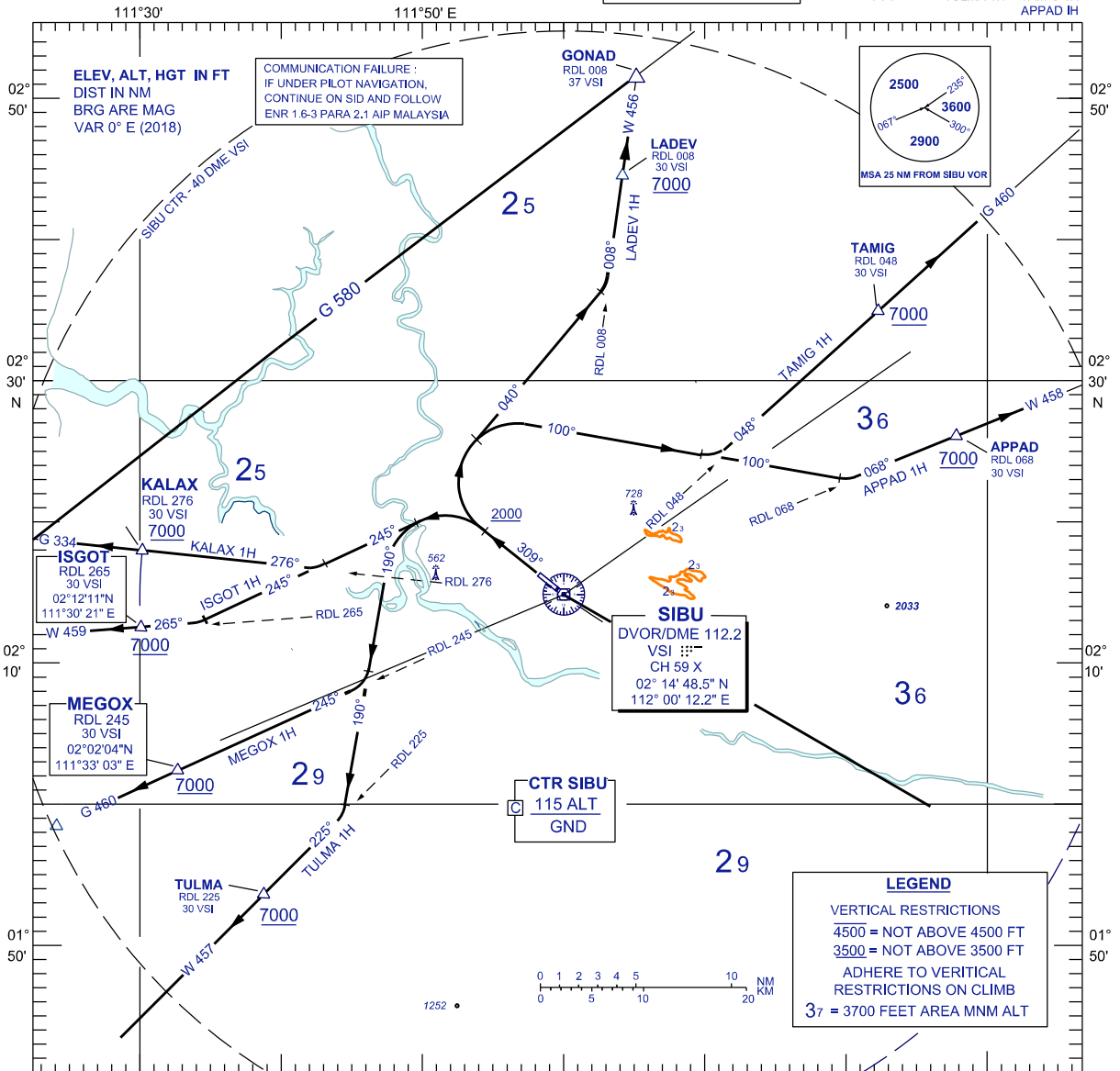
STANDARD DEPARTURE CHART INSTRUMENT (SID) - ICAO

TRANSITION ALTITUDE
11 000 FT

APP	122.6(P), 124.4 (S)
TWR	123.2
SMC	121.9
ATIS	127.65
EMERG	121.5

SIBU/SIBU (WBG5) RWY 31

KALAX 1H	MEGOX 1H	LADEV 1H
ISGOT 1H	TULMA 1H	TAMIG 1H
		APPAD 1H



LADEV ONE HOTEL DEPARTURE TAMIG ONE HOTEL DEPARTURE APPAD ONE HOTEL DEPARTURE

RWY 31 (RIGHT TURN)

CLIMB ON TRACK 309°. AT/ABOVE 2000 FT TURN RIGHT,

FOR LADEV 1H

TRACK 040°
INTERCEPT RDL 008 VSI VOR OUTBOUND TO LADEV

FOR TAMIG 1H

TRACK 100°
INTERCEPT RDL 048 VSI VOR OUTBOUND TO TAMIG

FOR APPAD 1H

TRACK 100°
INTERCEPT RDL 068 VSI VOR OUTBOUND TO APPAD

KALAX ONE HOTEL DEPARTURE ISGOT ONE HOTEL DEPARTURE MEGOX ONE HOTEL DEPARTURE TULMA ONE HOTEL DEPARTURE

RWY 31 (LEFT TURN)

CLIMB ON TRACK 309°. AT/ABOVE 2000 FT TURN LEFT,

FOR KALAX 1H

TRACK 245°
INTERCEPT RDL 276 VSI VOR OUTBOUND TO KALAX

FOR ISGOT 1H

TRACK 245°
INTERCEPT RDL 265 VSI VOR OUTBOUND TO ISGOT

FOR MEGOX 1H

TRACK 190°
INTERCEPT RDL 245 VSI VOR OUTBOUND TO MEGOX

FOR TULMA 1H

TRACK 190°
INTERCEPT RDL 225 VSI VOR OUTBOUND TO TULMA