

**STANDARD DEPARTURE CHART  
INSTRUMENT (SID) - ICAO**

**KOTA KINABALU/KOTA KINABALU  
(WBKK)**

**RWY 20**

TRANSITION ALTITUDE  
11,000 FT

APP 119.1  
TWR 118.3  
GND 121.6  
ATIS 127.4

(VOR/DME)

BANK ANGLE : 15° ACHIEVED

ELEV, ALT, HGT IN FT  
DIST IN NM  
BRG ARE MAG  
VAR 0° W

116°00'E

116°10'E

**RUMEG**

RDL 035 40 VJN  
05°26' 52.37" N  
116° 25' 05.29" E

**KABDU**

RDL 038 50 VJN  
06°33' 22" N  
116° 33' 12" E

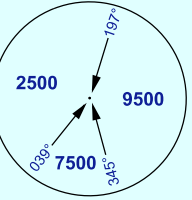
**ENBAX**

RDL 004 50 VJN  
06°44' 02.57" N  
116° 05' 32.21" E

35DME  
9000

35DME  
9000

WBD 526  
10 000  
GND



MSA 25 NM TO VJN VOR

ENBAX 1K

RDL 004

**KOTA KINABALU**

VOR/DME 113.1  
CH 78X  
VJN  
05° 53' 57.3" N  
116° 02' 02.3" E

35DME  
9000

RUMEG 2K  
RDL 035

RDL 038  
KABDU 1K

16<sub>0</sub>

VJN VOR/DME REQUIRED

**ANLOD**

RDL 090 40 VJN  
05°53' 55.82" N  
116° 42' 11.00" E

SOUTH CHINA SEA

5500

RDL 250

044°

057°

090°

PDG 5%

202°

6DME VJN

2010

RDL 090

ANLOD 2K

FL170

71

6284

6840

**TUSVU**

RDL 111 40 VJN  
05°40' 11.13" N  
116° 39' 44.83" E

RDL 111

RDL 127

10 DME VJN ABOVE

3700

TUSVU 1K

5568

4680

5650

65

**NOTE:**

UNLESS SPECIFIED BY TOWER, ALL IFR DEPARTURES TO CONTACT KINABALU RADAR 119.1 MHZ AFTER AIRBORNE.

**COMMUNICATION FAILURE :**

- SQUAWK 7600
- IF UNDER PILOT NAVIGATION, MAINTAIN LAST ASSIGNED LEVEL FOR 3MINUTES, IF NO ONWARD CLEARANCE IS RECEIVED. SUBSEQUENTLY CLIMB TO COMPLY WITH SID.
- IF UNDER RADAR VECTURING : MAINTAIN VECTOR FOR 2 MINUTES, IF BELOW MSA, CLIMB TO MSA, THEN TRACK TO INTERCEPT CLEARED OR PREVIOUSLY ASSIGNED SID TO DESTINATION.

**LEGEND**

- 9500 = AT OR ABOVE 9500FT
- 9500 = RECOMMENDED ALTITUDE 9500FT
- 87 = AREA MNM ALT 8700FT
- = SCALE BREAK

**MAKSU**

RDL 127 40 VJN  
05°29' 44.92" N  
116° 34' 04.62" E

10<sub>2</sub>

5010

115°50'N

CHANGES : UPDATING THE CHART FORMAT

116°20'E