

**STANDARD RADAR DEPARTURE -
INSTRUMENT - ICAO**

TRANSITION ALTITUDE
11000 FT

APP 119.1
TWR 118.3
GND 121.6
ATIS 127.4

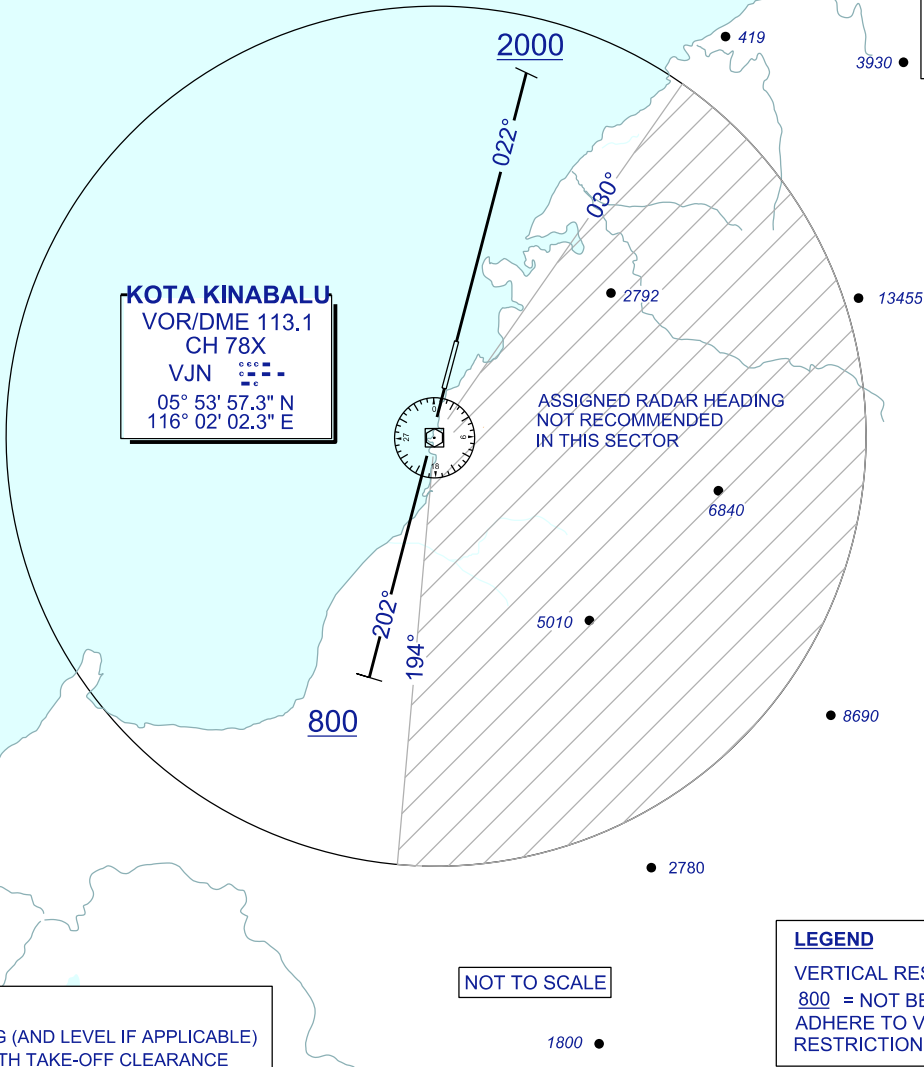
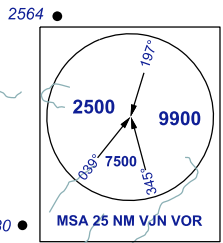
**KOTA KINABALU/KOTA KINABALU
(WBKK)**

RWY 02 / 20

RADAR TWO DEPARTURE

ELEV, ALT, HGT IN FT
DIST IN NM
BRG ARE MAG
VAR 0° W

SOUTH CHINA SEA



NOTE:
ASSIGNED HEADING (AND LEVEL IF APPLICABLE)
WILL BE ISSUED WITH TAKE-OFF CLEARANCE

LEGEND
VERTICAL RESTRICTIONS
800 = NOT BELOW 800FT
ADHERE TO VERTICAL
RESTRICTIONS ON CLIMB

RWY 02

TRACK 022°
AT 2000FT TURN TO ASSIGNED HEADING
PDG 5.0% UNTIL PASSING 2000 FT

RWY 20

TRACK 202°
AT 800FT TURN TO ASSIGNED HEADING

ON FIRST CONTACT WITH KINABALU DIRECTOR PILOT TO ADVISE:
- DIRECTION OF TURN AND ASSIGNED HEADING
- LEVEL PASSING TO NEAREST 100FT ASSIGNED LEVEL

RATE OF CLIMB IN FT / MIN									
GROUND SPEED (KT)	90	120	150	180	210	240	270	300	330
GRADIENT (3.3%)	300	401	502	602	669	803	869	1002	1103
GRADIENT (5.0%)	462	608	760	911	1063	1215	1367	1519	1672

COMMUNICATIONS FAILURE :

IMMEDIATELY SQUAWK 7600
MAINTAIN ASSIGNED - CLIMB TO MSA OR LAST ASSIGNED LEVEL IF HIGHER
MAINTAIN MSA OR ASSIGNED LEVEL, AS APPLICABLE, FOR 2 MINUTES
THEN CLIMB TO FLIGHT PLANNED LEVEL AND INTERCEPT FLIGHT PLANNED TRACK
(AS AMENDED BY ATC, IF APPLICABLE)