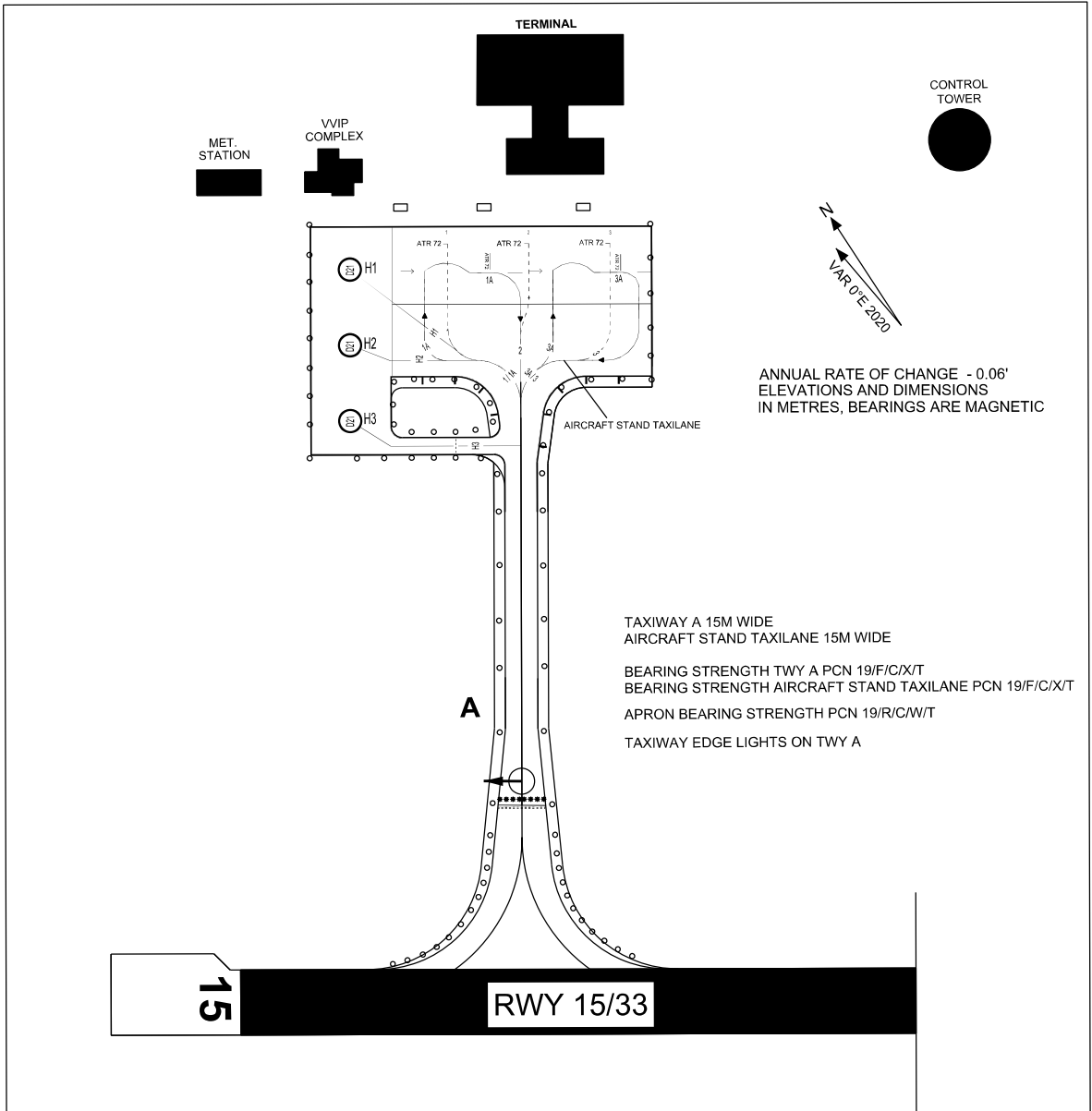


**AIRCRAFT PARKING/
DOCKING CHART - ICAO**

APRON ELEV
6 M

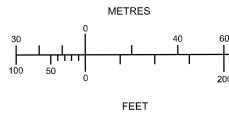
TWR	118.300 (P)
	118.425 (S)
EMERG	121.50
SMC	118.075
ATIS	126.200

MUKAH/MUKAH AIRPORT



AIRCRAFT PARKING / DOCKING STAND POSITION

INS COORDINATES FOR AIRCRAFT STAND	AIRCRAFT TYPE
BAY 1 02° 53' 17.68" N 112° 02' 34.97" E	AT75, DHC-6
BAY 2 02° 53' 16.67" N 112° 02' 35.65" E	AT75, DHC-6
BAY 3 02° 53' 15.66" N 112° 02' 36.33" E	AT75, DHC-6
BAY 1A 02° 53' 16.90" N 112° 02' 34.97" E	AT75, DHC-6
BAY 3A 02° 53' 15.29" N 112° 02' 36.05" E	AT75, DHC-6



LEGEND	
AIRCRAFT STAND	3
RUNWAY-HOLDING POSITION	
INTERMEDIATE HOLDING POSITION	
HELICOPTER PARKING BAY	
DIAMETER OF HELICOPTER PARKING BAY	021

CHANGES: NEW CHART AND INFORMATION UPDATED