

**STANDARD ARRIVAL CHART  
INSTRUMENT (STAR) - ICAO**

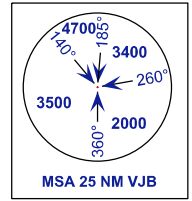
**TRANSITION ALTITUDE**  
11000FT

APP	124.70 (P)
	121.05 (S)
TWR	118.15
SMC	121.80
ATIS	123.05

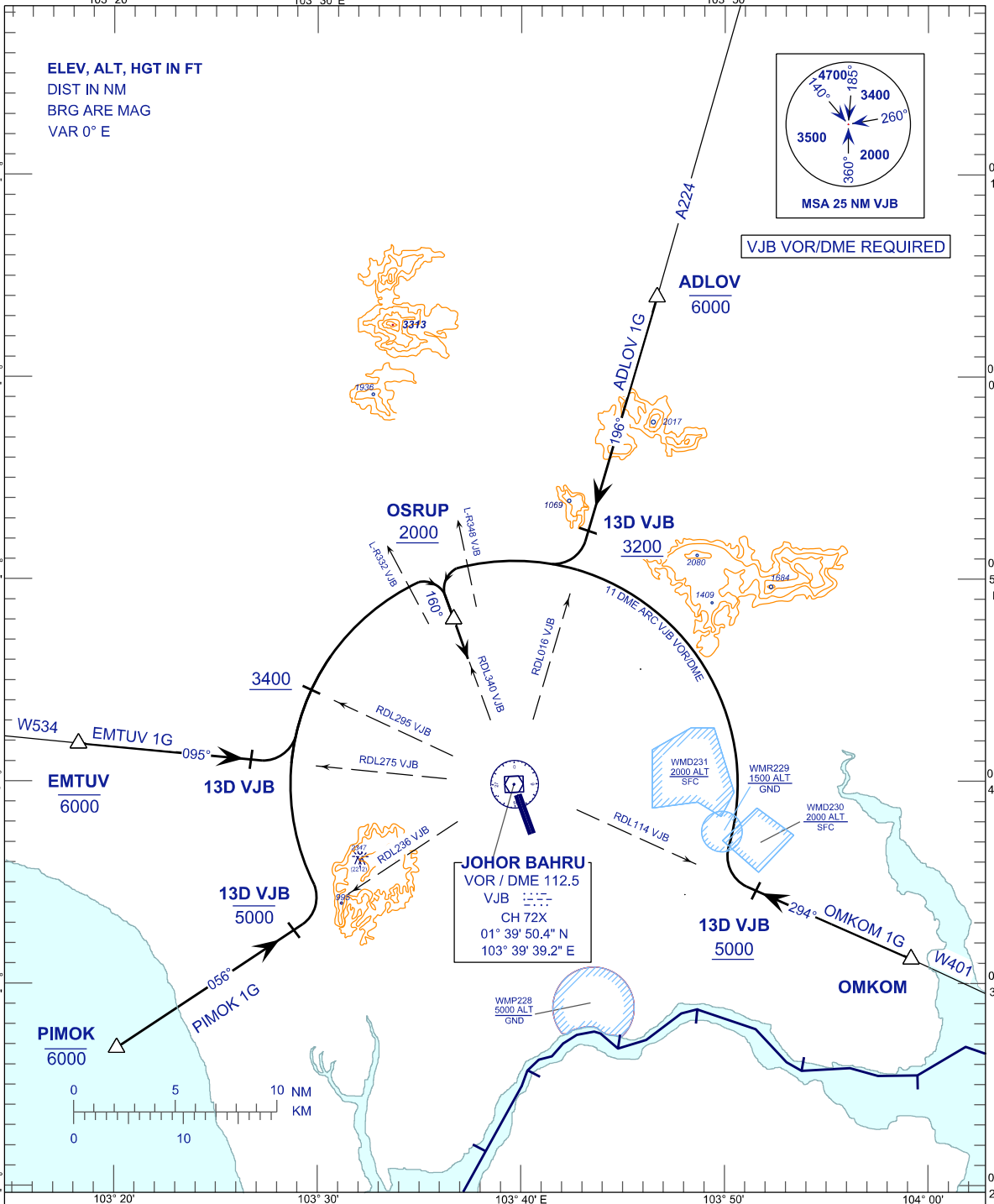
**JOHOR BAHRU/SENAI  
INTERNATIONAL AIRPORT (WMKJ)  
ARRIVAL (11 DME ARC) RWY 16**

EMTUV 1G    OMKOM 1G  
PIMOK 1G    ADLOV 1G

ELEV, ALT, HGT IN FT  
DIST IN NM  
BRG ARE MAG  
VAR 0° E



VJB VOR/DME REQUIRED



**COMMUNICATION FAILURE:**

- SET TRANSPONDER TO MODE A/C CODE 7600.
- IF UNDER PILOT NAVIGATION, MAINTAIN ASSIGNED LEVEL FOR 3 MINUTES. IF NO ONWARD CLEARANCE IS RECEIVED, SUBSEQUENTLY CLIMB/DESCENT TO COMPLY WITH STAR AND LAND.
- IF UNDER RADAR VECTORED, MAINTAIN VECTOR FOR 1 MINUTES, IF BELOW MSA CLIMB TO MSA, THEN TRACK TO INTERCEPT CLEARED OR PREVIOUSLY ASSIGNED STAR AND LAND.

**CHANGES :** ATIS TO ATIS IN FREQUENCY BOX,  
ARC DISTANCE 12D VJB TO 13D VJB,  
10DME ARC VJB VOR/DME TO 11DME ARC VJB VOR/DME.