

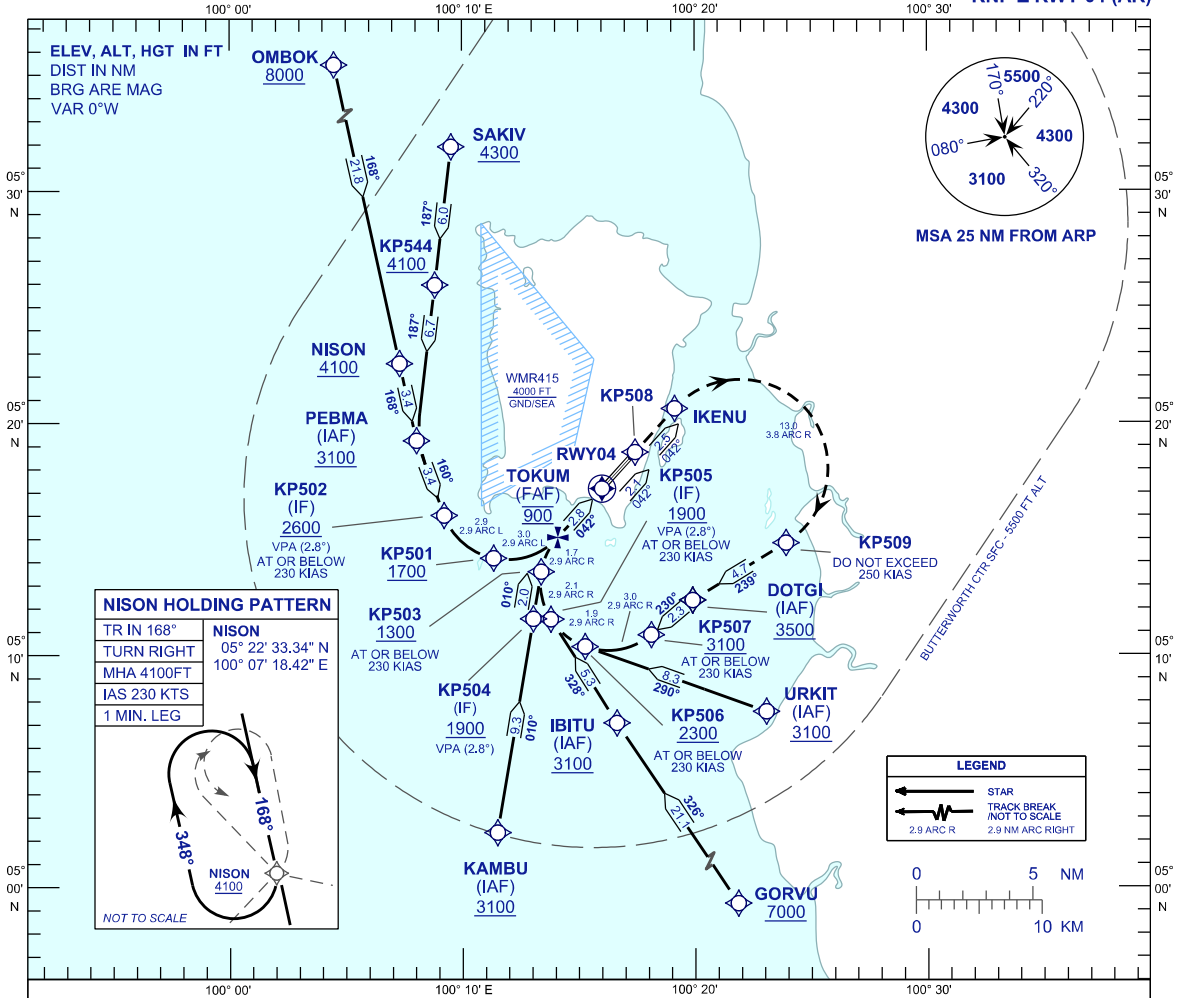
**INSTRUMENT  
APPROACH  
CHART - ICAO**

**AERODROME ELEV 10 FT**  
HEIGHT RELATED TO  
THR RWY 04 - ELEV 9 FT

APP 125.925  
TWR 121.10  
SMC 121.60, 121.90  
ATIS 126.40

**PENANG/PENANG  
INTERNATIONAL AIRPORT (WMKP)**

**RNP Z RWY 04 (AR)**



**NISON HOLDING PATTERN**

TR IN 168°	NISON
TURN RIGHT	05° 22' 33.34" N
MHA 4100FT	100° 07' 18.42" E
IAS 230 KTS	
1 MIN. LEG	

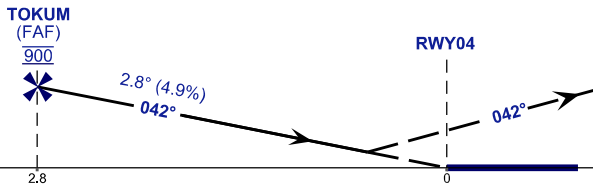
NOT TO SCALE

VPA 2.8°  
RDH 50FT

**MISSED APPROACH**  
CLIMB TO 3500FT VIA THE RNP MISSED APPROACH,  
TRACK TO DOTGI OR AS DIRECTED BY ATC.

TRANSITION LEVEL FL130  
TRANSITION ALT 11000 FT

THR ELEV 9  
NM FROM THR



STRAIGHT-IN APPROACH	OCA (OCH)	
CATEGORY OF AIRCRAFT	C	D
RNP (0.30)	785 (776)	
CIRCLING AND ALTERNATE N/A		

**AUTHORIZATION REQUIRED**

**NOTES**

- 1) APPROACH NOT AUTHORIZED WHEN AIRPORT TEMPERATURE BELOW 19°C OR ABOVE 40°C.
- 2) RF REQUIRED.
- 3) WMKP ALTIMETER SETTING REQUIRED.
- 4) GNSS REQUIRED.
- 5) PAPI AND VERTICAL PATH ANGLE NOT COINCIDENT.
- 6) RNP 1.0 REQUIRED FROM OMBOK & SAKIV TO IAF.
- 7) RNP 0.3 REQUIRED FROM IAF'S TO FAF.
- 8) RNP 0.3 REQUIRED FROM DA TO KP508.
- 9) RNP 0.5 REQUIRED FROM KP508 TO IKENU.
- 10) LATERAL TRANSITION TO MAP MUST NOT BE INITIATED PRIOR TO DA/H POSITION.