

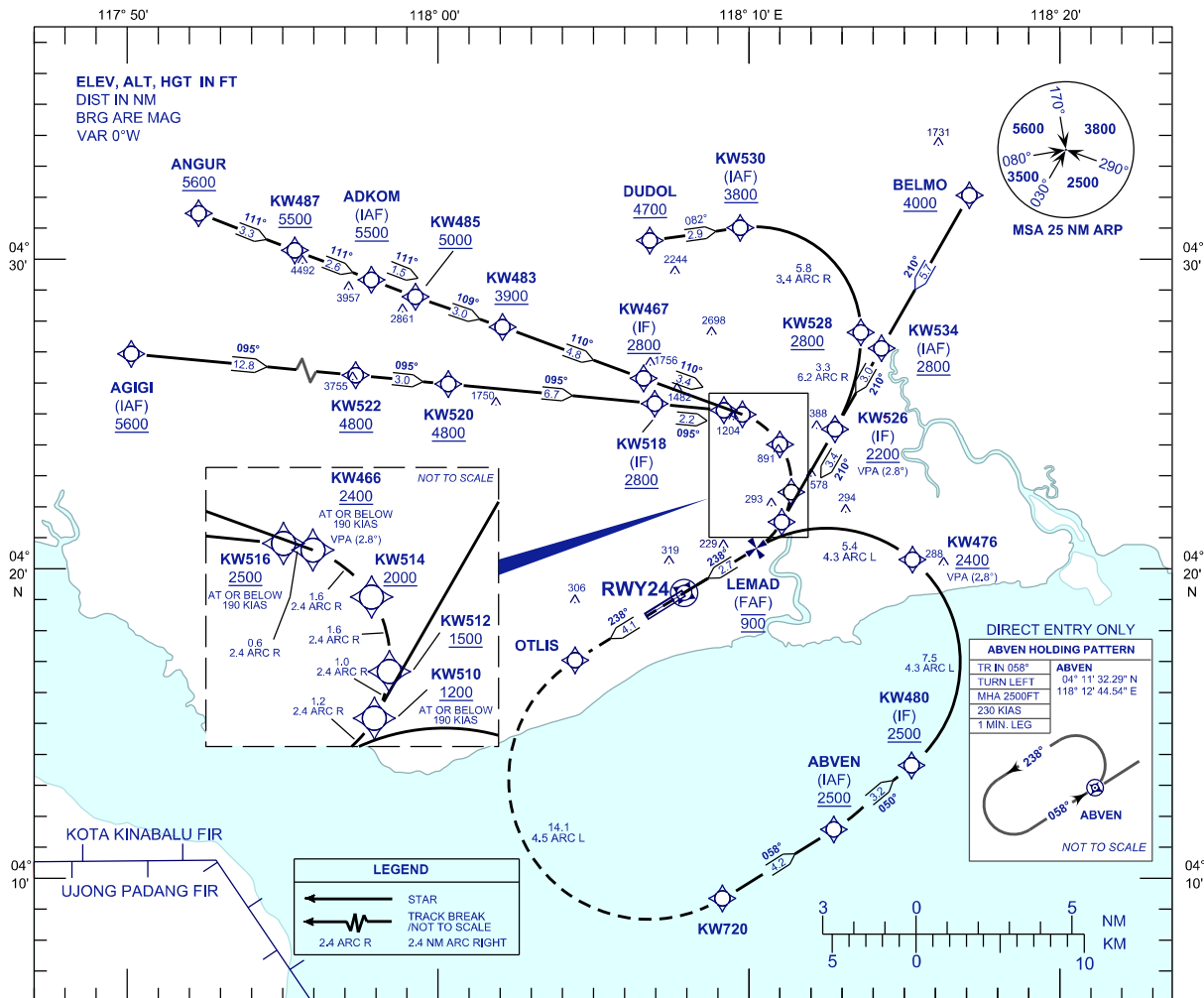
**INSTRUMENT  
APPROACH  
CHART - ICAO**

**AERODROME ELEV 56 FT**  
HEIGHT RELATED TO  
THR RWY 24 - ELEV 36 FT

APP 123.55  
TWR 122.50  
SMC 121.90  
ATIS 126.25

**TAWAU/TAWAU (WBKW)**

**RNP Z RWY 24 (AR)**

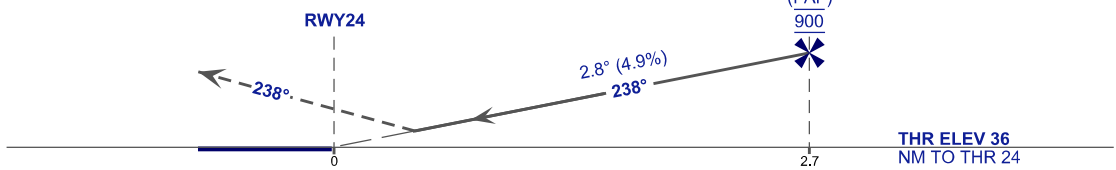


VPA 2.8°  
RDH 54FT

**MISSED APPROACH**  
CLIMB TO 2500 FT VIA THE RNP MISSED APPROACH  
TRACK TO ABVEN OR AS DIRECTED BY ATC.

TRANSITION LEVEL FL130  
TRANSITION ALT 11000 FT

VSS PENETRATIONS 950 M  
PRIOR TO THR



STRAIGHT-IN APPROACH	OCA (OCH)	
CATEGORY OF AIRCRAFT	C	D
RNP 0.3	550 (514)	
CIRCLING AND ALTERNATE N/A		

GROUND SPEED - KT	70	90	100	120	140	160
RATE OF DESCENT (2.8°) (FT/MIN)	347	446	495	594	693	792
DISTANCE TO THRESHOLD (NM)	2.7	2	1			
ALTITUDE (FT)	900	670	370			

- |  |   |                       |
|--|---|-----------------------|
| <b>1. AUTHORIZATION REQUIRED</b>   | <b>2. GNSS REQUIRED</b>                         | <b>3. RF REQUIRED</b> |
| 4. APPROACH NOT AUTHORIZED WHEN AIRPORT TEMPERATURE BELOW 18°C OR ABOVE 39°C.            | 6. PAPI AND VERTICAL PATH ANGLE NOT COINCIDENT. |                       |
| 5. WBKW ALTIMETER SETTING REQUIRED.  |   |                       |
| 7. RNP 1.0 REQUIRED FROM ANGUR AND DUDOL TO IAF'S.                                       |   |                       |
| 8. RNP 0.3 REQUIRED FROM IAF'S TO FAF (EXCEPT KW534 TO KW526, STANDARD RNP1.0 REQUIRED). |   |                       |