

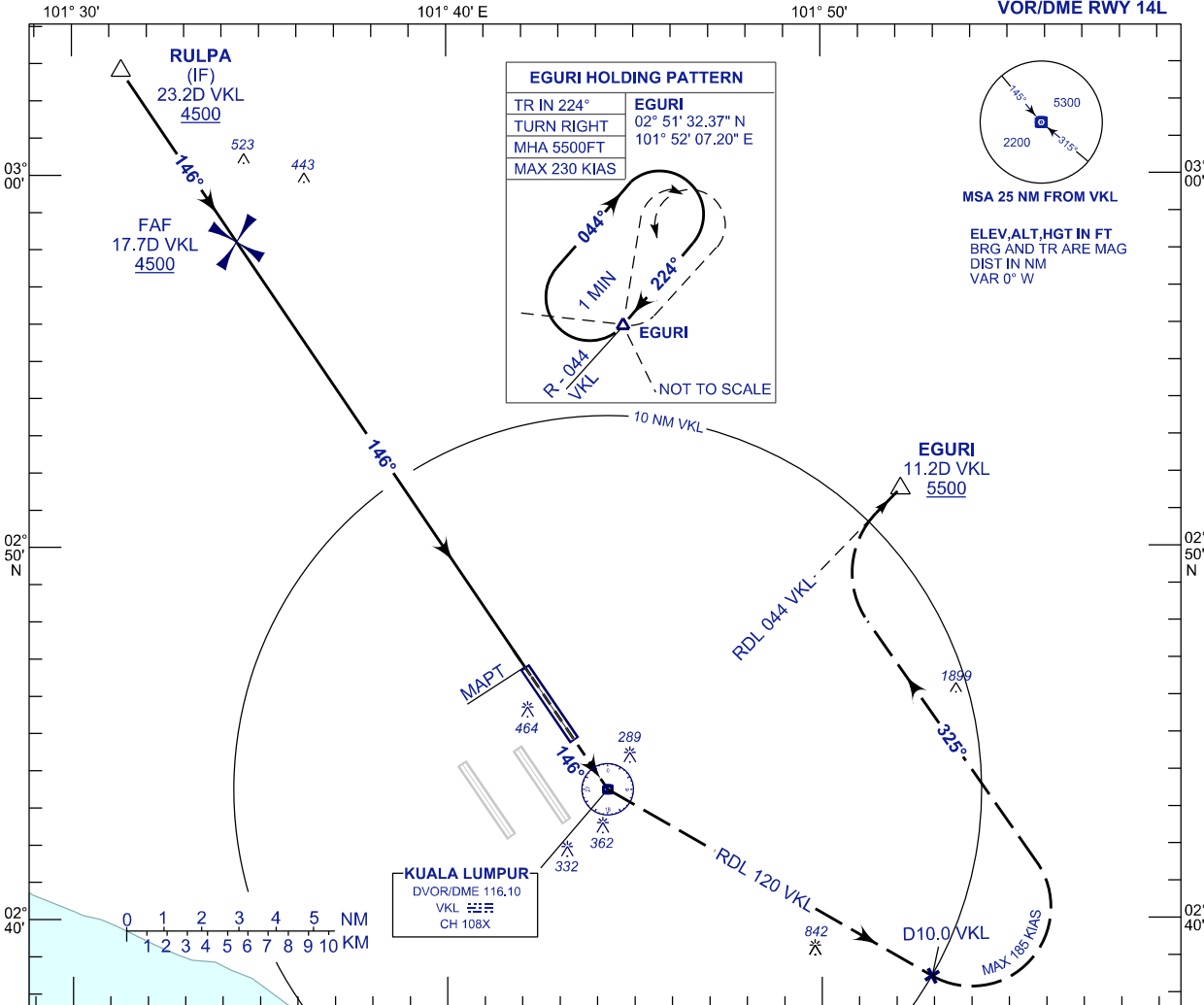
**INSTRUMENT
APPROACH
CHART - ICAO**

**AERODROME ELEV 69 FT
HEIGHT RELATED TO
THR RWY 14L - ELEV 54 FT**

APP 118.65 120.35 135.75	TWR 118.80	SMC 121.65	ATIS 128.05
-----------------------------------	---------------	---------------	----------------

**SEPANG/KL INTERNATIONAL
AIRPORT (WMKK)**

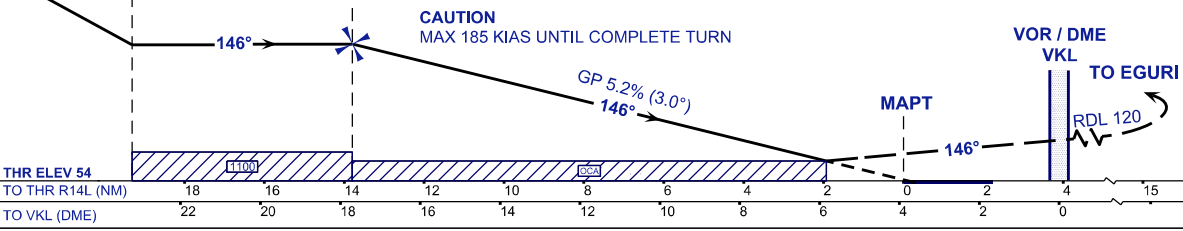
VOR/DME RWY 14L



USE QNH
RDH 52 FT

MISSED APPROACH
AT MAPT CLIMB TO 5500FT ON TR 146° THEN TURN LEFT ON RDL 120 VKL UNTIL 10DME THEN TURN LEFT ON TR 325° TO INTERCEPT RDL 044 VKL TO EGURI AND HOLD OR AS DIRECTED BY ATC

TRANSITION LEVEL FL130
TRANSITION ALT 11 000



OCA (OCH)	A	B	C	D	GROUND SPEED (GS)	KT	80	100	120	140	160	180
VOR/DME	720/666				FAP - RWY14L (13.8 NM)	MIN:SEC	10:21	8:17	6:54	5:55	5:11	4:36
					RATE OF DESCEND (318.4 FT/NM)	FT/MIN	420	530	640	740	850	960

DME VKL	NM	17.7	16.6	15.6	14.6	13.6	12.6	11.6	10.6	9.6	8.6	7.6	6.6	5.6	4.6
DIST THR/RWY14L	NM	13.8	12.7	11.7	10.7	9.7	8.7	7.7	6.7	5.7	4.7	3.7	2.7	1.7	0.7
ALTITUDE	FT	4500	4151	3832	3514	3196	2877	2559	2240	1922	1604	1285	967	648	330