

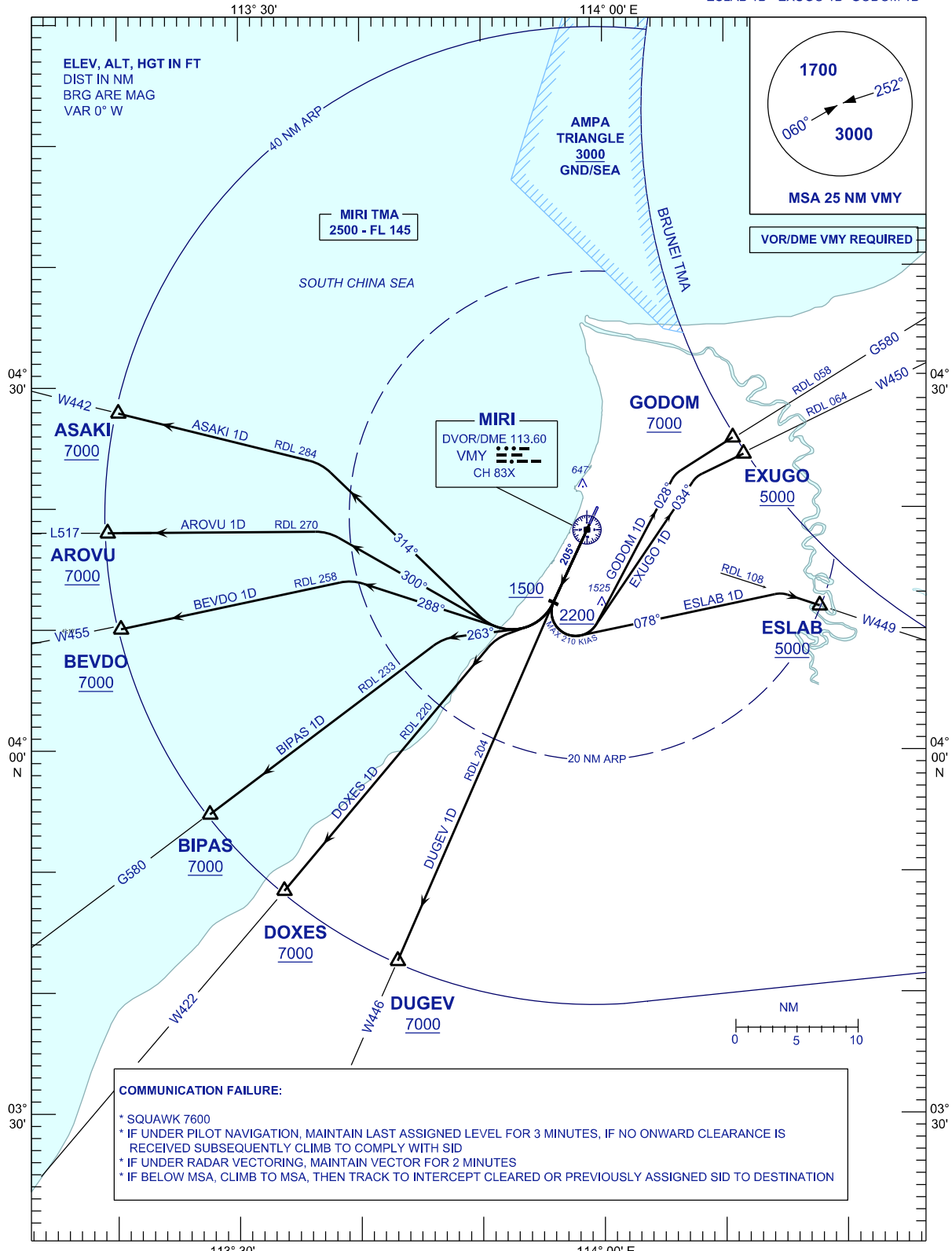
**STANDARD DEPARTURE CHART  
INSTRUMENT (SID) - ICAO**

TRANSITION ALTITUDE  
11 000 FT

APP	129.9(P)
	122.7(S)
TWR	123.3
SMC	121.9
CATIS	127.0

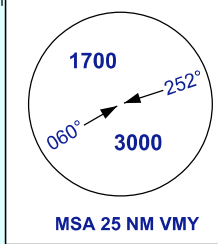
**MIRI/MIRI (WBGR)  
RWY 20**

ASAKI 1D	AROVU 1D	BEVDO 1D
BIPAS 1D	DOXES 1D	DUGEV 1D
ESLAB 1D	EXUGO 1D	GODOM 1D



ELEV, ALT, HGT IN FT  
DIST IN NM  
BRG ARE MAG  
VAR 0° W

MIRI TMA  
2500 - FL 145



VOR/DME VMY REQUIRED

MIRI  
DVOR/DME 113.60  
VMY  
CH 83X

**COMMUNICATION FAILURE:**

- \* SQUAWK 7600
- \* IF UNDER PILOT NAVIGATION, MAINTAIN LAST ASSIGNED LEVEL FOR 3 MINUTES, IF NO ONWARD CLEARANCE IS RECEIVED SUBSEQUENTLY CLIMB TO COMPLY WITH SID
- \* IF UNDER RADAR VECTORED, MAINTAIN VECTOR FOR 2 MINUTES
- \* IF BELOW MSA, CLIMB TO MSA, THEN TRACK TO INTERCEPT CLEARED OR PREVIOUSLY ASSIGNED SID TO DESTINATION