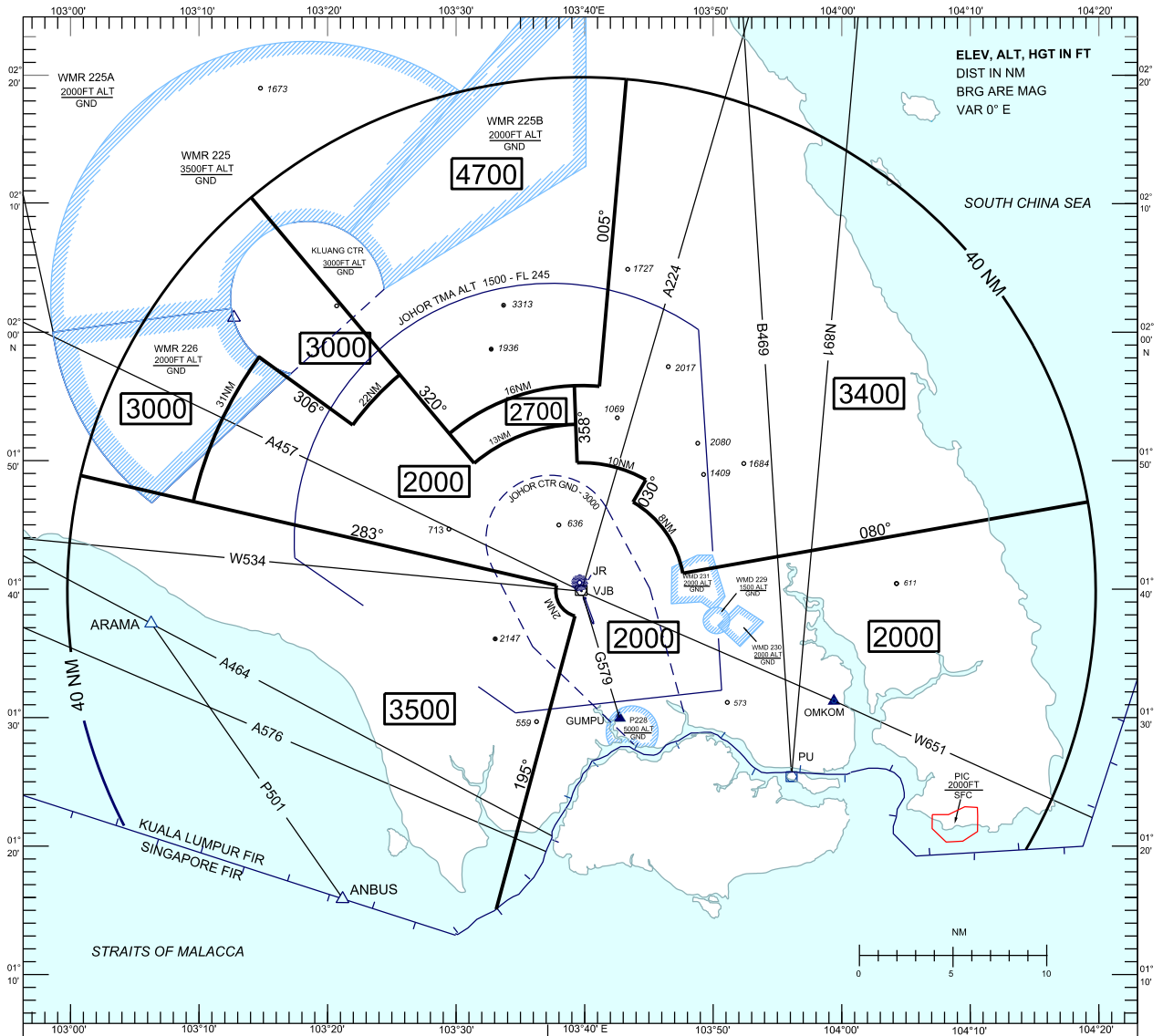


**ATC SURVEILLANCE MINIMUM
ALTITUDE CHART - ICAO**

**AERODROME ELEV 135 FT
TRANSITION ALT 11000 FT**

APP 124.7 (P)
121.05 (S)

**JOHOR BAHRU/SENAI
INTERNATIONAL AIRPORT (WMKJ)**



PROCEDURES FOR LOSS OF RADIO COMMUNICATION

1. SET TRANSPONDER TO 7600
2. A) IN VMC
CONTINUE APPROACH VISUALLY FOR THE DUTY RUNWAY AND LAND ; OR
- B) IN IMC
MAINTAIN LAST ASSIGNED ALTITUDE; OR CLIMB TO MSA IF THE ASSIGNED ALTITUDE IS BELOW MSA AND TRACK DIRECT TO VJB VOR
3. AT THE HOLDING FACILITY VJB, CARRY OUT THE STANDARD RADIO COMMUNICATION FAILURE PROCEDURE

NOTE :

THE ATC SMA COMPRISES AN AREA OF 40 NAUTICAL MILES OF VJB VOR/DME STATION. RADAR VECTORING SERVICES SHALL BE PROVIDED WITHIN JOHOR TMA AND JOHOR CTR

ALL BEARINGS ARE MAGNETIC AND TAKEN FROM VJB ONLY SIGNIFICANT OBSTRUCTIONS AND SPOT HEIGHTS ARE SHOWN, THESE ARE BASED ON QNH.

ALTITUDES SHOWN PROVIDE 1000 FEET OF CLEARANCE OVER ALL OBSTACLES WITHIN 3 NM OF THE BOUNDARY WHEN UP TO 20 NM FROM THE RADAR ANTENNA, OR WITHIN 5 NM OF THE BOUNDARY AT DISTANCE GREATER THAN 20 NM FROM THE RADAR ANTENNA, WMP 228 - FROM GROUND TO 5000 FT 2 NM RADIUS.

CHANGES : REMOVE KONG KONG NDB, JB NDB AND INSERT GUMPU AND OMKOM WAYPOINTS.