

**STANDARD ARRIVAL CHART
INSTRUMENT (STAR) - ICAO**

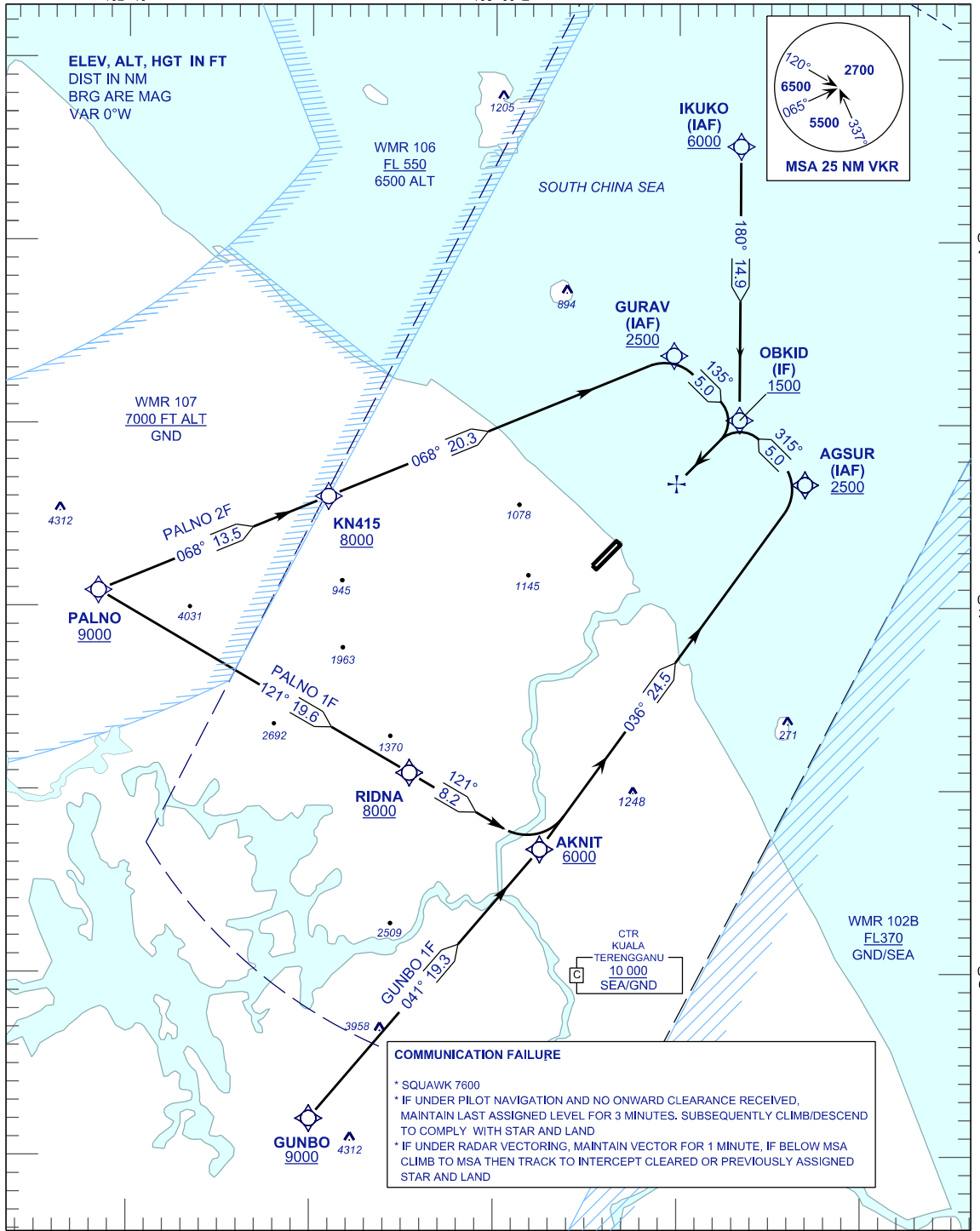
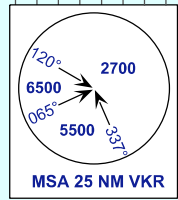
TRANSITION ALTITUDE
11 000 FT

APP	123.6
	235.32
	121.5
TWR	119.05
SMC	121.6
ATIS	126.65

**KUALA TERENGGANU/
SULTAN MAHMUD (WMKN)**

RNAV (GNSS) RWY 22

PALNO 1F GUNBO 1F
IKUKO 1F PALNO 2F



CHANGES : REPLACE WAYPOINT ISLIM TO AGSUR