

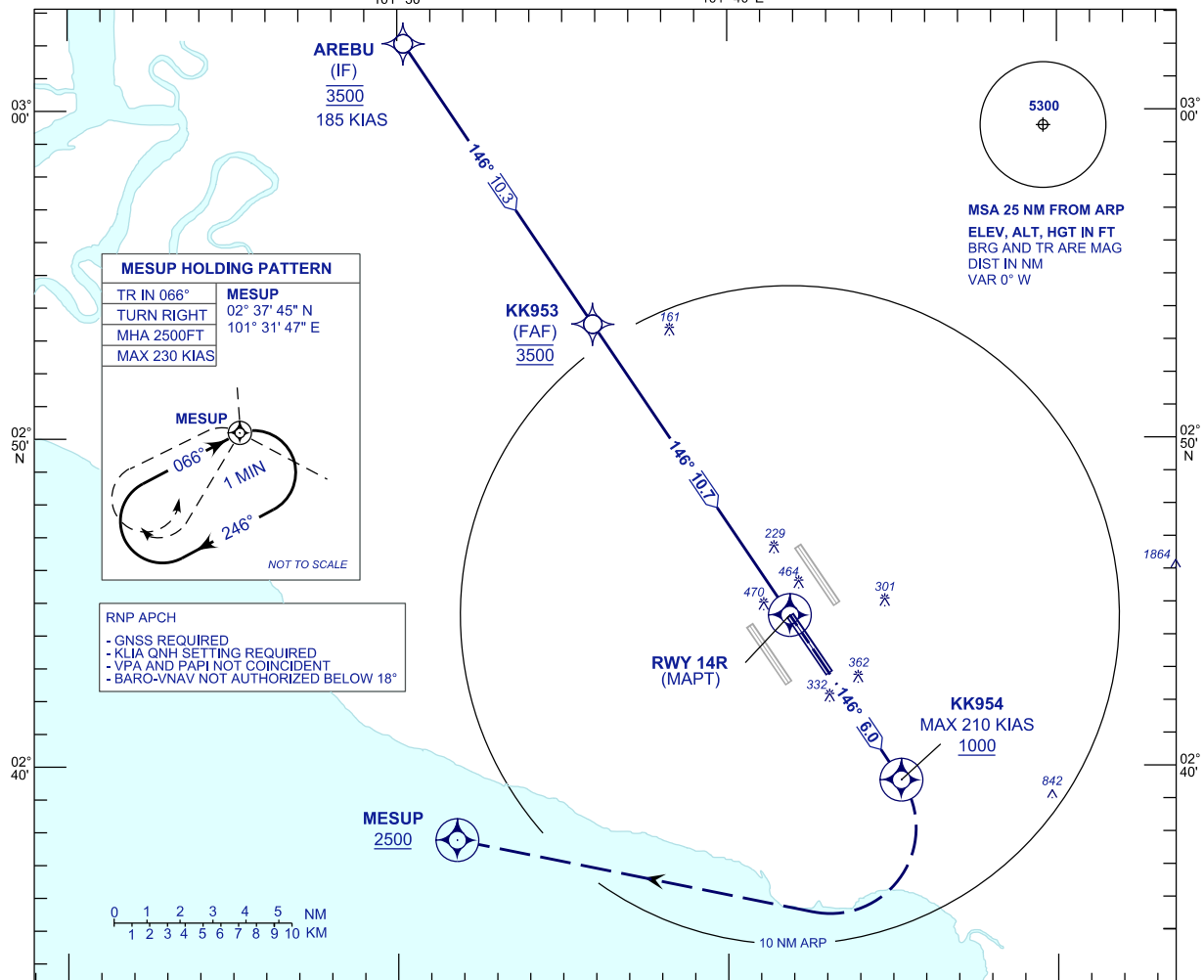
**INSTRUMENT  
APPROACH  
CHART - ICAO**

**AERODROME ELEV 69 FT**  
HEIGHT RELATED TO  
THR RWY 14R - ELEV 54 FT

APP 118.65 135.75 120.35	TWR 118.50	SMC 121.80 122.525	ATIS 128.05
-----------------------------------	---------------	--------------------------	----------------

**SEPANG/KL INTERNATIONAL  
AIRPORT (WMKK)**

RNP Y RWY 14R



VPA 3.0°  
TCH 52 FT

**MISSED APPROACH**

AT MAPT MAINTAIN TR146 TO KK954 CLIMB TO 2500FT.  
AT KK954, TURN RIGHT TO MESUP AND HOLD AT MESUP  
OR AS DIRECTED BY ATC.

TRANSITION LEVEL FL130  
TRANSITION ALT 11 000

**AREBU  
(IF)**  
3500  
185 KIAS

**KK953  
(FAF)**  
3500

**CAUTION**

MAX 210 KIAS UNTIL CROSSING KK954

146°

5.2% (3.0°)  
146°

**RWY14R**  
(MAPT LNAV ONLY)

THR ELEV 54

TO THR 14R (NM) 20 18 16 14 12 10.7 10 8 6 4 2 0 2 4 6

STRAIGHT - IN APPROACH	OCA (OCH)				GROUND SPEED (GS)		KNOTS		80	100	120	140	160	180	
CATEGORY OF AIRCRAFT	A	B	C	D	FAF - RWY14R (10.7 NM)		MIN:SEC		8:00	6:24	5:20	4:35	4:00	3:34	
LNAV / VNAV	630 (576)				RATE OF DESCENT (318.5 FT/NM)		FT/MIN		420	530	630	740	840	950	
LNAV	670 (616)				DIST THR / RWY14R		NM	10.7	9.7	8.7	7.7	6.7	5.7	4.7	3.7
	ALTITUDE		FT		3500	3183	2864	2546	2228	1909	1591	1272			
	DIST THR / RWY14R		NM		2.7	1.7	0.7								
	ALTITUDE		FT		954	635	317								