

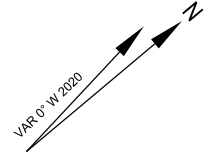
**AIRCRAFT PARKING/
DOCKING CHART - ICAO**

APRON ELEV
8 M

**PULAU PANGKOR/
PULAU PANGKOR AIRPORT**

INS COORDINATES FOR AIRCRAFT STANDS	BEARING STRENGTH	AIRCRAFT TYPE
1 04° 14' 45.54" N 100° 33' 13.58" E	NIL ASPHALT	DHC-6

ELEVATIONS AND DIMENSIONS IN METRES
BEARINGS ARE MAGNETIC



ANNUAL RATE OF CHANGE -0.16°

04° 14' 41" N
100° 33' 12" E

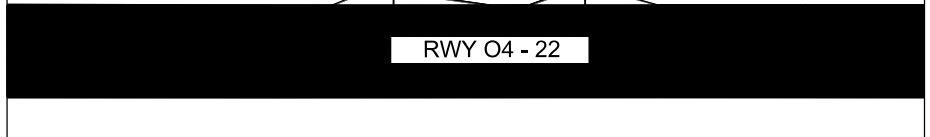
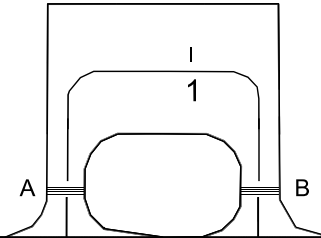


ARP

TERMINAL

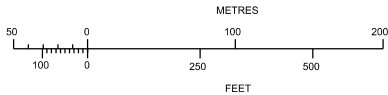


AFRS



TAXIWAYS A AND B 12 M WIDE

BEARING STRENGTH TWY A AND B NIL



LEGEND	
AIRCRAFT STAND	1
RUNWAY HOLDING POSITION	≡≡≡

CHANGES : SCALE BAR & ADD NEW TABULAR.