

INSTRUMENT APPROACH CHART - ICAO

AERODROME ELEV 55 FT
HEIGHT RELATED TO
THR RWY 36 - ELEV 52 FT

TWR 118.1, 238.1
GND 263.9, 120.4
APP 119.7, 121.5
ATIS 127.5, 253.8
SRA 261.6, 118.7

**KUANTAN/SULTAN
AHMAD SHAH (WMKD)
RWY 36**

TACAN 3 (HI / LO)

ELEV, ALT, HGT IN FT
DIST IN NM
BRG ARE MAG
VAR 0° W



ANCHOR RADIAL 270° VKN / 16 TAC
TRACK IN 090° TURN RIGHT. TIME 1 MIN.
MIN. HOLD 7000 FT. IAS 230 KT

IAF
16 TAC

FL 200

1 MIN

090°

← 270°

ELEVATION 184
HEIGHTS (132)

0 1 2 3 4 5 NM
0 5 10 KM

KUANTAN
VORTAC 113.7
VKN
CH 84X
03° 46' 23" N
103° 12' 39" E

FAF
6 TAC

1800
(1748)

005°

03° 35' 22.39" N
103° 11' 41.90" E

IF
11 TAC
3500
(3448)

1 MIN

005°

185°

ANCHOR RADIAL 185° VKN / 11 TAC
TRACK IN 005° TURN RIGHT. TIME 1 MIN.
MIN. HOLD 3500 FT. IAS 230 KT

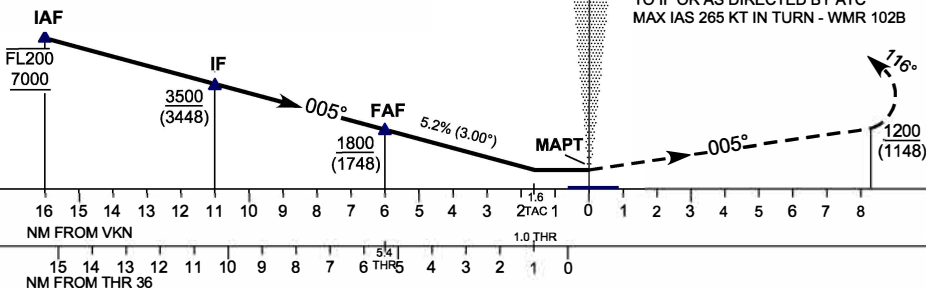
TRANSITION LEVEL FL 130
TRANSITION ALT 11000

USE QNH

VORTAC
VKN

MISSED APPROACH

CLIMB ON 005° TO 4000 FT ON PASSING 1200 FT
TURN RIGHT HDG 116° REJOIN 15 TAC ARC AND RETURN
TO IF OR AS DIRECTED BY ATC
MAX IAS 265 KT IN TURN - WMR 102B



OCA(OCH)				
AIRCRAFT CATEGORY	A	B	C	D
STRAIGHT - IN - APPROACH	430(378) / 1.6 TAC			
CIRLING & MIN VISIBILITY - KM (NM)	600(545)	900(845)	1100(1045)	
	1.9(1.0)	2.8(1.5)	3.7(2.0)	4.6(2.5)

CAUTION : CIRLING IS NOT AUTHORISED WEST OF
RUNWAY 18/36

ALTITUDE VS DME DISTANCE TO THR RWY 36						
DME DISTANCE	6	5	4	3	2	1.6
ALTITUDE	1820	1700	1380	1060	745	430

TIME TO THR RWY 18 FROM FAP 5 NM			
GROUND SPEED (KT)	90	120	150
MINUTES : SECONDS	3:20	2:30	2:00
5.2% DESCENT (FT/MIN)	480	640	800

GROUND SPEED (KT)	180	210	240
MINUTES : SECONDS	1:40	1:26	1:15
5.2% DESCENT (FT/MIN)	1000	1115	1275

CHANGES: AT PROFILE VIEW, AMEND RWY 18 TO RWY 36 IN ALTITUDE TABLE.